

JetStor[®]

Storage. Solutions. Support.

ISCSI

4U

24 BAY

JetStor 824iX

ISCSI SAN STORAGE



LOWEST PER GB COST ON THE MARKET - BEST PRICE PERFORMANCE RATIO

The JetStor 824iX high performance iSCSI-SAN storage system features Single-upgradable controller or optional Dual-Active controllers, Intel® D1500 dual core processor, cutting edge 12Gb SAS 3.0 technology, onboard high speed 10GbE LAN ports and the latest JetStor SANOS 4.0 (SAN Storage Management Operating System v4.0).

JetStor 824iX iSCSI-SAN storage system offers next-generation storage with blazing fast CPU power, DDR4 system memory, mind blowing performance, high availability, unparalleled scalability, suitable for enterprise level and SMB storage requirements. The JetStor iX series was designed to be an ideal solution for enterprise, cloud data centers, and remote branch office (ROBO) deployments.

SINGLE OR DUAL-ACTIVE (ACTIVE/ACTIVE) CONTROLLER SAN SYSTEM

JetStor 824iX series features optional Dual-Active controller architecture, both controllers concurrently provide storage services in real time. Active-Active architecture doubles the available host bandwidth and cache hit ratio, ensuring maximum utilization of system resources and maximized throughput. If one controller fails, the other controller can transparently take over all storage services seamlessly. In addition to storage services, management service can be transparently passes to the secondary controller.

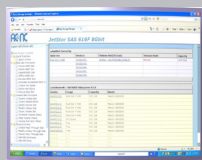
"Our JetStor all-flash storage solution has provided a dramatic increase in server performance, and any lagging due to disk-queuing has completely disappeared. You also get reporting of server metrics in addition to bandwidth usage which assists in troubleshoot and capacity planning." ~ Dan C., Director of IT, NEXT Web Solutions

FEATURES

- Single or Dual-Active (Active/Active) controllers
- Up to 300K IOPS
- Built-in 10GbE iSCSI
- Intel D1500 dual core processor; up to 64GB RAM per controller
- Thin Provisioning, Snapshot, Cache Mirroring through NTB Bus
- Two optional flexible I/O host cards, 10G SFP+ 8 ports
- Local clone and remote replication for disaster recovery
- Virtualization support for VMware VAAI, Microsoft Hyper-V ODX, and Citrix
- Cache-to-Flash memory protection technology
- Scale up solution supports over 4.4PB of raw storage capacity
- Free telephone & email support.

WARRANTY

- Three to five years on disk drives, one year on BBM, five years on all other components.
- Optional advanced replacement program ships drive replacements within 24 hours. Optional on-site service also available.



SANOS 4.0

Proactively manage, configure & monitor all JetStor storage systems from any browser.

www.acnc.com
sales@acnc.com
[800.213.2667](tel:800.213.2667)



JetStor[®]

Storage. Solutions. Support.

SPECIFICATIONS

JetStor 824iX

ISCSI SAN STORAGE

**Over
300K
IOPS!**



Model	JetStor SAS 824iX / 824iXD	
RAID Controller	Single-upgradable or Dual-active	
Host Connectivity (per controller)	Host Card Slot 1 (optional) :	Host Card Slot 2 (optional)
	4x 10GbE iSCSI (SFP+) ports OR 4x 1GbE iSCSI (RJ45) ports OR 2 x 10GbE iSCSI (RJ45) ports	4x 10GbE iSCSI (SFP+) ports (Slot 2 provides 20Gb bandwidth) OR 4x 1GbE iSCSI (RJ45) ports OR 2 x 10GbE iSCSI (RJ45) ports
	Built-in 2 x 10GBASE-T iSCSI (RJ45) ports Built-in 1 x 1GbE management port	
Processor	Intel® D1500 dual core processor	
Memory (per controller)	DDR4 ECC 4GB, up to 128GB	
Disk Drives	3.5": 4TB, 6TB, 8TB, 10TB, 12TB, 14TB, 16TB; 2.5" SAS: 1.2TB, 1.8TB, 2.4TB; 2.5" SATA SSD: 960GB, 1.9TB, 3.8TB; 2.5" SAS SSD: 960GB, 1.9TB, 3.8TB, 7.6TB, 15.3TB	
Expansion Connectivity (per controller)	2 x mini-SAS HD (SFF-8644) ports onboard	
Expansion Enclosure	JX JBOD series 12Gb SAS expansion enclosure / 824JX or 824JXD (LFF 24 bay)	
Max. # of drives	284	
Form Factor	4U 24-bay, LFF	
Dimension (H x W x D)	19" Rackmount 6.7 x 17 x 19 in	
LCM (LCD Module)	USB LCM (optional)	
Memory Protection	Cache-to-Flash module (optional) Super capacitor module + Flash module : Protect up to 16GB memory	
Power Supply	80 PLUS Platinum, two redundant 770W (1+1)	
	AC Input: 100 - 127V 10A, 50-60Hz 200 - 240V 5A, 50-60Hz	DC Output: +12V 63.4A +5VSB 2.0A
Fan Module	2 x hot pluggable/redundant fan modules	
Temperature	Operating temperature : 0 to 40°C / Shipping temperature : -10°C to 50°C	
Relative Humidity	Operating: 20% to 80% non-condensing / Non-Operating: 10% to 90%	
Supported Host Operating Systems	VMware, Citrix, Hyper-V, KVM, Windows Server 2008, 2008 R2, 2012, 2012 R2, 2016; SLES (SUSE Linux Enterprise Server) 10, 11, 12; Red Hat Enterprise Linux 5, 6, 7; CentOS 6, 7; Solaris 10, 11; Free BSD 9, 10; Mac OS 10.11 or greater	

FEATURES

- RAID level 0 ,1 ,0+1 ,3 ,5 ,6 ,10 ,30 ,50, 60, and N-way mirror
- Flexible storage pool ownership
- Thin Provisioning (QThin) with space reclamation
- Global, local, & dedicated hot spares
- Write-through & write-back cache policy
- Online disk roaming
- Support RAID member disks across enclosure boundary
- Background I/O priority setting
- Instant RAID volume availability
- Fast RAID rebuild
- Online storage pool expansion
- Online volume extension / migration
- Auto volume rebuilding
- Instant volume restoration
- Online RAID level migration
- Support video editing mode for enhanced performance
- Support disk drive health check & S.M.A.R.T attributes
- Storage pool parity check and media scan for disk scrubbing
- Local Clone

MANUFACTURER



www.acnc.com
sales@acnc.com
800.213.2667

Advanced Computer & Network Corporation

5001 Baum Boulevard, Suite 680
Pittsburgh, PA 15213
Phone: 412.683.9010
Fax: 412.683.9070
Support: 800.213.2667
Europe: +44 (0)1628 891616
GSA Schedule: 47QTCA19D00HN
COSTARS Contract# 003-434

SYSTEM FEATURES

- iSCSI-SAN storage system with optional Dual-Active(Active/Active) controller
- High availability design with no single point of failure
- Intel® D1500, dual core processor, up to 64GB RAM per controller
- Latest 12Gb SAS 3.0 technology
- Built-in 10GbE iSCSI
- Over 300K IOPS
- Scale up solution supports over 4.4PB of raw storage capacity
- JetStor SANOS (SAN Operating System) v4.0
- Advanced Storage Management- Thin Provisioning-Snapshot-Cache Mirroring through NTB Bus
- 2 optional flexible I/O host cards 10G SFP+ 8 ports
- Local clone and remote replication for disaster recovery
- Virtualization support for VMware VAAI, Microsoft Hyper-V ODX, and Citrix
- Cache-to-Flash memory protection technology
- Remote Replication