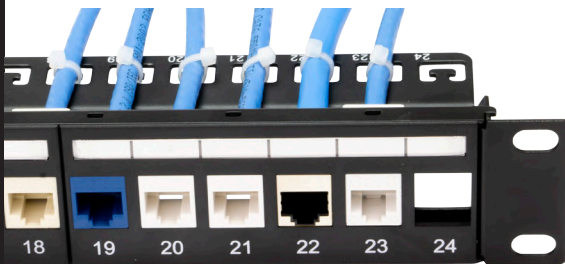


Unloaded Patch Panels



Support and Management Bar
Maintains cables at required bend radius and secures cables



Labels
Write-on labels with protective covers

Blank Cutouts
Compatible with Platinum Tools keystones and industry standard keystones



Numbers
Ports are numbered for easy connection identification

Platinum Tools is known as a leader in providing products and solutions for the structured wiring networking world of data, voice and video. Our **Unloaded Patch Panels** make media integration easy, flexible and field-configurable.

Unloaded Patch Panels

- Field configurable, populate ports as needed
- Easy to mix and match keystones, replace a damaged port, add new runs
- Category upgrades are easy
- Maximize limited rack space
- Perfect for residential or small office applications

Features

- For use with RJ45 Ethernet, HDMI audio/video, voice, USB and other applications
- Ports are numbered for easy connection identification
- Write-on labels with protective covers
- Mounts into 1U/2U of EIA-standard 19 in. 2-post rack or wall-mount rack enclosure
- Support and management bar is removable and includes cable zip ties to secure cables

Phone: 800.749.5783
Fax: 800.749.5784

California, USA

www.platinumtools.com

We Make Connections EZ!™

P/N 641-24U | Unshielded
Unloaded Patch Panel 24 Port
 24 port, 1U, UTP, 19 in.



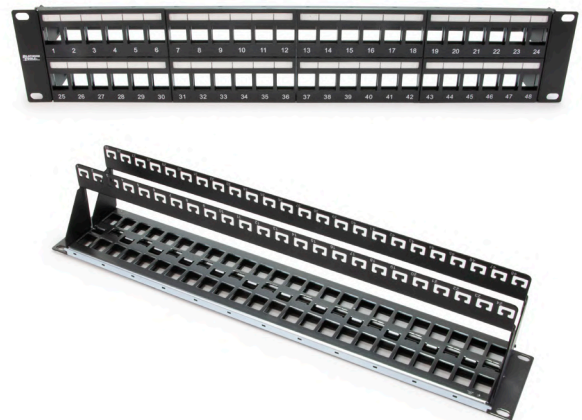
P/N 642-24SU | Shielded
Unloaded Patch Panel 24 Port
 24 port, 1U, STP, 19 in.



P/N 643-48U | Unshielded
Unloaded Patch Panel 48 Port
 48 port, 2U, UTP, 19 in.



P/N 644-48SU | Shielded
Unloaded Patch Panel 48 Port
 48 port, 2U, STP, 19 in.



Ordering Information

Part #	Description
641-24U	Unloaded Patch Panel 24 port, 1U, UTP, 19 in.
642-24SU	Unloaded Patch Panel 24 port, 1U, STP, 19 in.
643-48U	Unloaded Patch Panel 48 port, 2U, UTP, 19 in.
644-48SU	Unloaded Patch Panel 48 port, 2U, STP, 19 in.

