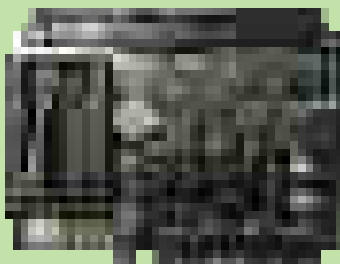




C3-400-PRO

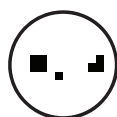


C3-200-PRO

## C3 Pro-Series

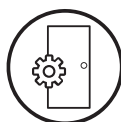
### IP-Based Access Control Panel

C3 Pro Series is a next-generation series of panels having advanced access control features including anti-passback, first-card opening, multi-card opening, duress password entry, embedded card verification which support real-time PUSH protocol communication.



#### Choice of Readers:

Full range of Wiegand readers supported. Full range of readers including but not limited to ZKTeco prox, HID prox, HID iClass, HID Seos, Fingerprint, Face, Palm, Bluetooth and QR Code.



#### Door Control and More:

Along with relay contacts for controlling door locks, easily programmable auxiliary relays can be used for additional control and interface to lights, alarms, annunciators, intrusion detection panels, or even extra locking devices or gate controllers.



#### Communication:

C3 Pro panels support TCP/IP communication and install easily on your network.



#### Options:

C3 Pro panels come in two configurations to suit project needs and reduce the cost of unused capacity. 2-door and 4-door models can be mixed and matched in an optimized system architecture.



#### Lowest Total Cost of Ownership:

C3 Pro panel firmware can be upgraded in the field. New controller features can be loaded without any advanced tools, extending and expanding the value of your investment.



#### Built-In Advanced Access Control:

Anti-Pass-back, First-Card Opening, Multi Card Opening, Duress Password Entry, and Auxiliary Input/Output Linkages are built into the firmware.



#### Capacity:

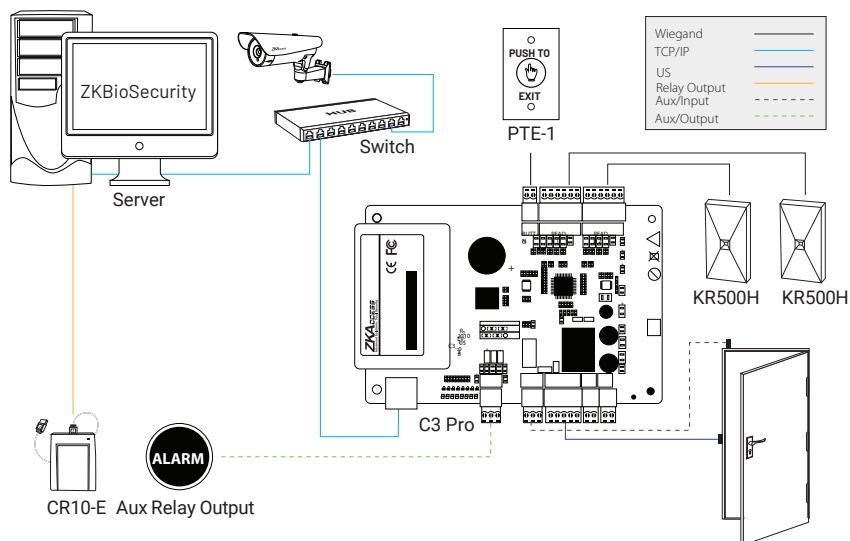
30,000 users and 100,000 events. Panel can be backed up in real-time on to an optional SD card. All data is preserved on the panel if power is lost. Panel continues operating even when network connection is interrupted.



#### For Software Developers:

SDK is available for integrators and OEM's to integrate the C3 Pro panels with their existing security or personnel management applications. Upon request, ZKTeco can also customize C3 Pro firmware to meet any custom requirements.

## TYPICAL INSTALLATION:



## OPTIONAL ACCESSORIES:



## SPECIFICATIONS:

### C3-200-PRO

### C3-400-PRO

Software Compatibility	ZKBioSecurity Software, only	ZKBioSecurity Software, only
Number of Doors Controlled	2 Doors	4 Doors
Number of Readers Supported	4 (Wiegand readers)	4 (Wiegand readers)
Types of Readers	Wiegand	Wiegand
Number of Inputs	6 ( 2 for Exit button, 2 for Door status, 2 for Aux)	12 (4 for Exit button, 4 for Door status, 4 for Aux)
Number of Outputs	4 ( 2-from C Relay for Lock and 2-form C Relay for Aux Output)	8 (4-form C Relay for Lock and 2-form C Relay for Aux Output)
User Capacity	30,000	30,000
Log Capacity	100,000	100,000
Weight	10 lbs. (4.5 kg)	10 lbs. (4.5 kg)
Communication	TCP/IP	TCP/IP
Enclosure	Powder Coated Aluminum	Powder Coated Aluminum
Mounting	Wall Mount	Wall Mount
Recommended Power	12V DC, 1.5A	12V DC, 1.5A
Dimensions (Bundle)	15 × 3.15 × 11 inches	15 × 3.15 × 11 inches
Dimensions ( Board)	6.3 × 4.17 inches	6.3 × 4.17 inches

## ZKTeco USA

1600 Union Hill Rd., Alpharetta GA 30005

Phone: (862) 505 - 2101 • Fax: (862) 204 - 5906 • info@zktcouusa.com • zktcouusa.com

© Copyright 2022. ZKTeco Inc. ZKTeco Logo and ZKTeco USA Logo have registered trademarks of ZKTeco or a related company.

All other product and company names mentioned are used for identification purposes only and may be trademarks of their respective owners.

All specifications are subject to change without notice. All rights reserved.