



AVC-ELN81FT/2.8 AI

NDA
COMPLIANT | CE | FC

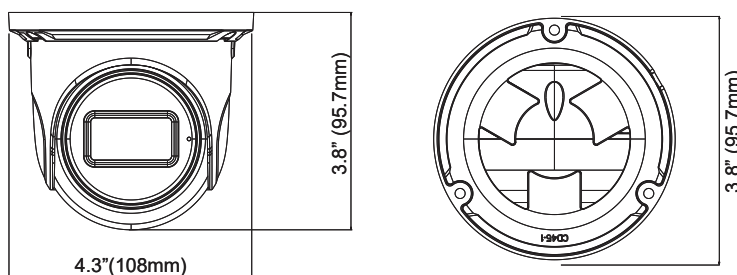
8MP H.265 IR WATER-PROOF TURRET NETWORK CAMERA

OVERVIEW

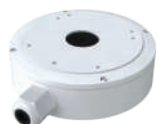
- H.265 /H.264/MJPEG coding
- Max resolution: 8MP (3840 x 2160)
- ICR Auto Switch, True day / Night Vision
- 3D DNR, WDR, HLC, BLC, Smart IR, etc.
- Up to 100ft IR Night View Distance
- Built-in micro SD card slot with video and still image capture function (up to 256GB)
- 1CH built-in MIC; 1CH audio input
- DC12V/PoE power supply
- IP 67 ingress protection
- Support three streams
- Support remote monitoring by smart phones & tablet PCs with iOS and Android OS
- Intelligent analytics
- NDA Compliant

DIMENSIONS

Unit : inch(mm)



OPTIONAL ACCESSORIES



AVM-EDMTS-W-TL1



AVM-EWMTS-W-TL1

SPECIFICATIONS

| CAMERA | | | | | |
|------------------------------|-----------------------------------------------------------------------------------------------------------------------------------------------------------|-----------------|-----------------|----------------|--|
| Image Sensor | 1/3" Progressive Scan CMOS | | | | |
| Image Size | 3840 x 2160 | | | | |
| Electronic Shutter | 1/2s to 1/100,000s | | | | |
| Iris Type | Fixed Iris | | | | |
| Min. Illumination | Color: 0.005 lux @ F1.6(AGC ON); BW: 0 lux with IR | | | | |
| IR Distance | Up to 98ft | | | | |
| Lens | Fixed 2.8 @ F1.6 Horizontal FoV: 94° Vertical FoV: 50° Diagonal FoV: 115° | | | | |
| Focus | Fixed | | | | |
| Lens Mount | M12 | | | | |
| Days & Night | ICR | | | | |
| Wide Dynamic Range | 120 dB | | | | |
| Digital NR | Yes | | | | |
| Backlight Compensation (BLC) | Yes | | | | |
| Highlight Compensation (HLC) | Yes | | | | |
| Angle Adjustment | Pan: 0°~360°; Tilt:0°~90°;Rotation: 0°~360° | | | | |
| VIDEO IMAGE | | | | | |
| Video Compression | Main stream: H.265 / H.264 Sub/third stream: H.265 / H.264 / MJPEG | | | | |
| H.265 Compression Standard | Main Profile@Leve4.1 High Tier | | | | |
| Resolution | 8MP (3840×2160), 6MP (3072×2048), 5MP (2592×1944), 4MP (2560 × 1440), 3MP (2304 × 1296), 1080P (1920 × 1080), 720P (1280 × 720), D1, 480 × 240, CIF | | | | |
| Main Stream | 60Hz: 8MP/6MP/5MP/4MP/2K/3MP/1080P/720P (1~30fps); 50Hz: 8MP/6MP/5MP/4MP/2K/3MP/1080P/720P (1~25fps); HFR mode: 1080P/720P (60Hz: 1~60fps; 50Hz: 1~50fps) | | | | |
| Sub Stream | 60Hz: 720P/D1/CIF/VGA/480x240 (1~30fps); 50Hz: 720P/D1/CIF/VGA/480x240 (1~25fps) | | | | |
| Third Stream | 60Hz: 720P/D1/480x240/CIF (1~30fps); 50Hz: 720P/D1/480x240/CIF (1~25fps) | | | | |
| Video Bit Rate | 64 Kbps ~ 12 Mbps (CBR / VBR Adjustable) | | | | |
| Image Settings | ROI, Saturation, Brightness, Hue, Contrast, Wide Dynamic, Sharpness, Image Mirror, Image Flip, NR, etc. adjustable through client software or web browser | | | | |
| ROI | Each ROI to be configured separately | | | | |
| NETWORK / INTERFACE | | | | | |
| Network | 1 x RJ45 10M / 100M Self-Adaption | | | | |
| Network Protocol | UDP, IPv4, IPv6, DHCP, NTP, RTSP, RTP, RTCP, PPPoE, DDNS, SMTP, FTP, 802.1x, SNMP, UPnP, HTTP, HTTPS, QoS | | | | |
| Interface Protocol | ONVIF | | | | |
| Web Browser | IE (Plug-in required) / Google Chrome / Edge / Firefox / Safari | | | | |
| Online Connection | Support simultaneous monitoring for up to 3 users; Support multi-stream real time transmission | | | | |
| Storage | Micro SD/SDHC/SDXC Slot (up to 256GB) with video and still image capture function | | | | |
| Video Output | No | | | | |
| Audio | 1CH audio input; 1CH built-in MIC | | | | |
| Alarm | N/A | | | | |
| Hardware Reset | YES | | | | |
| DORI DISTANCE | | | | | |
| Lens | Detect | Observe | Recognize | Identify | |
| 2.8mm | 202.62ft(61.76m) | 81.03ft(24.70m) | 40.51ft(12.35m) | 20.27ft(6.18m) | |
| FUNCTIONS | | | | | |
| Remote Monitoring | Web Browser Interface, Mobile App, AVYCON CVMS 2.0 | | | | |
| Smart Alarm | Motion detection, SD card full, SD card error | | | | |
| Smart Analytics | Video Exception (scene change, video blurr and video cast detection), line crossing detection and region intrusion detection | | | | |
| General Function | Watermark, IP address filtering, video mask, heartbeat, illegal login lock, corridor pattern | | | | |
| GENERAL | | | | | |
| Power Supply | DC12V/PoE | | | | |
| Power Consumption | < 5W | | | | |
| Operating Environment | - 30 °C ~ 60 °C (-22°F~140°F);Humidity: less than 95 % (non-condensing) | | | | |
| Storage Environment | - 30 °C ~ 65°C (-22°F~149°F), Humidity: less than 95 % (non-condensing) | | | | |
| Dimensions (in) | Ø 3.76 × 4.25 | | | | |
| Weight (lb) | Approx. 1.01 lbs | | | | |
| Ingress Protection | IP 67 | | | | |
| Certificate | CE, FCC | | | | |
| Installation | Ceiling mounting (Wall mounting available with the junction box and bracket) | | | | |
| Environmental Protection | Complies with Directive EU RoHS, WEEE(2012/19/EU) , directive 94/62/EC and REACH(EC1907/2006) 95.7 | | | | |