

DA-BM1100

ADAPTER PLATE



Dimension(mm) : Φ 154mm x 45mm(H)

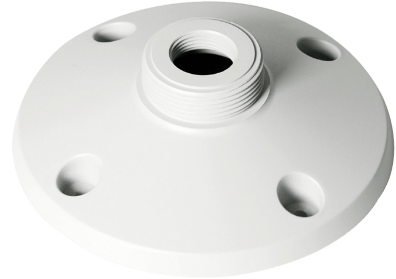
Weight : 0.2 kg(0.45 lb)

SPECIFICATIONS

Mechanical	
Material	Aluminum
Color	White
Dimensions	Φ 154.0x50.0(H) (Φ 6.06" x 1.97(H))
Weight	0.22kg (0.49lb)
Relevant Mount	DA-CM130Q DA-CM150Q DA-WM1400
Relevant Model	DC-S6281HXDC-S4561WRA



PRODUCT IMAGE



DIMENSIONS

Unit - mm (inch)

