

# Internet Telephony PBX system (100 SIP User Registrations)



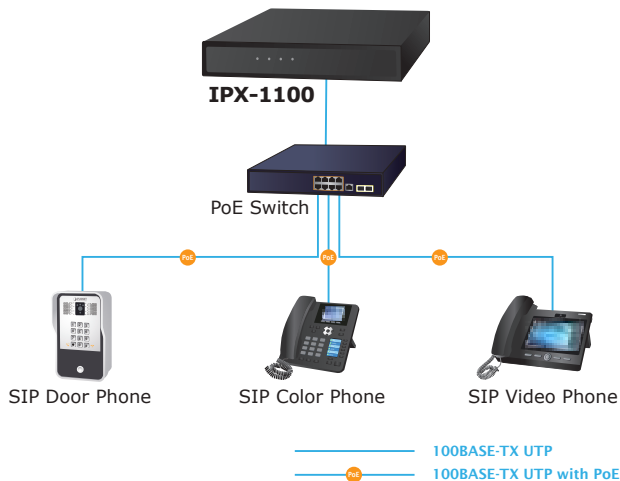
### Intuitive, Ease-of-Use IP PBX Management

PLANET IPX-1100/IPX-1102 advanced IP PBX telephony system is effortlessly set up and managed, thanks to its intuitive **web-based user interface** and **quick setup wizard**. As an **Asterisk-based** solution, it offers the complete benefits of **pre-loaded SIP**, akin to features found in other high-end enterprise-level appliances. With a capacity to accommodate **100 user registrations**, the IPX-1100/IPX-1102 simplifies the administration of a comprehensive voice-over-IP system, providing both convenience and cost advantages. The equipment is best paired with PLANET color IP phones to get the function going smoothly and to have a seamless connection between the software and hardware.

Model	IPX-1100	IPX-1102
Extension User	100	100
Concurrent Call	50	50
Room Concurrent Call	30	30
Recording/Voicemail	400 hrs	400 hrs
Module	-	2 FXO (Built-in)

### Off-net Calling Capability, Call Restriction, Call Access Control

The IPX-1100 is instrumental in establishing a robust VoIP system for small- and medium-sized businesses (SMBs). When seamlessly integrated with PLANET VoIP gateways (VGW-series), the IPX-1100 extends support for analog connections. This integration guarantees seamless communication encompassing the existing PSTN calls, analog phones, IP phones, and SIP-based endpoints.



### System Highlights

- 50 concurrent calls and up to 100 registers
- 30 conference attendees
- 400-hour recording (internal storage)
- 2 built-in FXO interfaces (only for IPX-1102)
- Unlimited SIP/IMS trunks
- HD voice codec G.722 for perfect voice quality
- Voicemail to Email for not missing any important message
- Paging and intercom function strengthens the work efficiency
- Built-in SIP proxy server following RFC 3261
- Multiple language of GUI for international business
- Web-based control panel for easy configuration and management of the system
- Hardware echo cancellation module for great and smooth communication
- Strong security features protect your system from hacking
- Records voice and voicemail to external USB disk
- Quick setup wizard

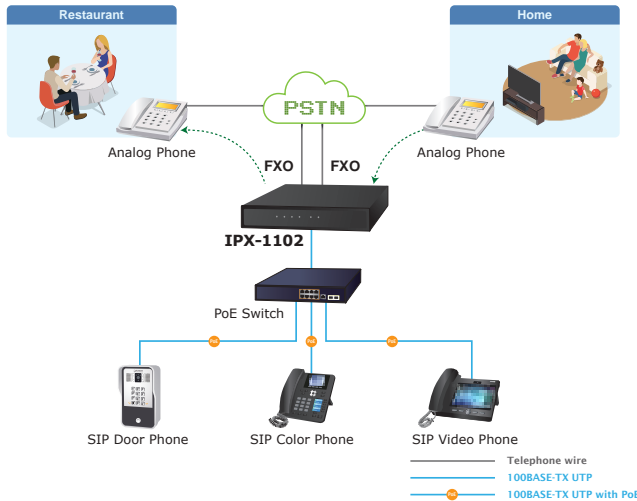
### Codec and Protocol

- SIP 2.0 (RFC3261), IAX2 and Lync server compliant
- Audio Codec: G.711-Ulaw, G.711-Alaw, G.722, G.726, G.729, GSM, SPEEX, Opus, AMR, AMR-WB
- Video Codec: H.261, H.263, H.263+, H.264 and VP8
- DTMF: RFC 4733, SIP info, in-band and auto

### Network and Security Features

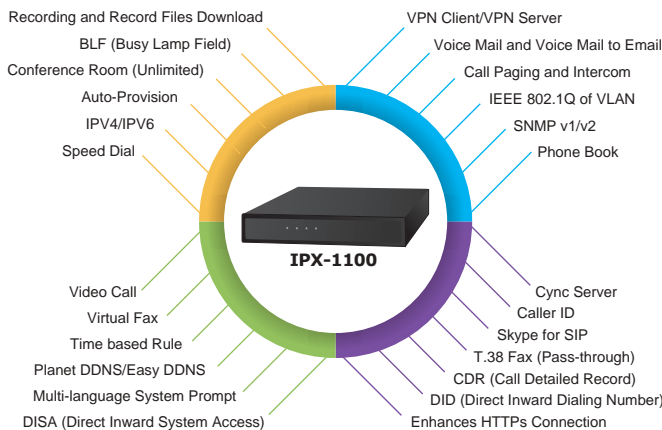
- DHCP server, DDNS client (PLANET DDNS & Easy DDNS)
- SNMP v1/v2, IEEE802.1Q VLAN
- IPv4/IPv6, TR069
- Manual configuration of static route table
- Troubleshooting (Ping and Traceroute)
- VPN server and VPN client
- Mitigates SIP Register DoS attacks
- Prevents Abort Invite DoS attacks
- Prevents SSH Login DoS attacks
- Firewall and enhances HTTPS connection
- Geo-IP (Security policy based on IP address geographical locations)
- Data backup and recovery

Meanwhile, the IPX-1102, equipped with 2 FXO interfaces, establishes a PBX system supporting 2 analog calls. This ensures smooth communication across existing PSTN calls, analog phones, IP phones, and SIP-based endpoints.



**Distributed VoIP Network Infrastructure**

In the new-generation communication age, the IPX-1100/IPX-1102 supports IPv6 and VPN (client/server) connection to provide users with more flexible and advantageous communications products. With PLANET DDNS function, the IPX-1100/IPX-1102 also helps users to apply and remember the login information easier. Its multiple-language feature helps user to quickly and friendly manage the system. Moreover, the IPX-1100/IPX-1102 supports Lync server to which smart phone (using third-party app) and analog phone are connected via its communication with other devices of Lync server.



**Standard Compliance**

Compliant with the Session Initiation Protocol 2.0 (RFC 3261), the IPX-1100/IPX-1102 is able to broadly interoperate with equipment provided by VoIP infrastructure providers, thus enabling them to provide their customers with better multi-media exchange services.

**Compliant with standard SIPv2.0 RFC 3261**



IPX-1100

**PBX Features**

- SIP Register with UDP/TCP/TLS/SRTP
- One Touch Recording
- Mobility Extension
- Black List
- BLF (Busy Lamp Field)
- CDR (Call Detailed Record)
- Conference Room
- DID (Direct Inward Dialing Number)
- SRTP (Secure Real time Transport Protocol)
- DND (Do Not Disturb)
- IVR (Interactive Voice Responses)
- Follow Me, Call Spy and PIN Set
- Distinctive Ringtone
- Multi-language System Prompt
- Phone Book, Speed Dial
- Ring Group, SIP Trunk
- Skype for SIP, Smart DID, System Log
- T.38 fax (pass-through), voicemail and voicemail to e-mail

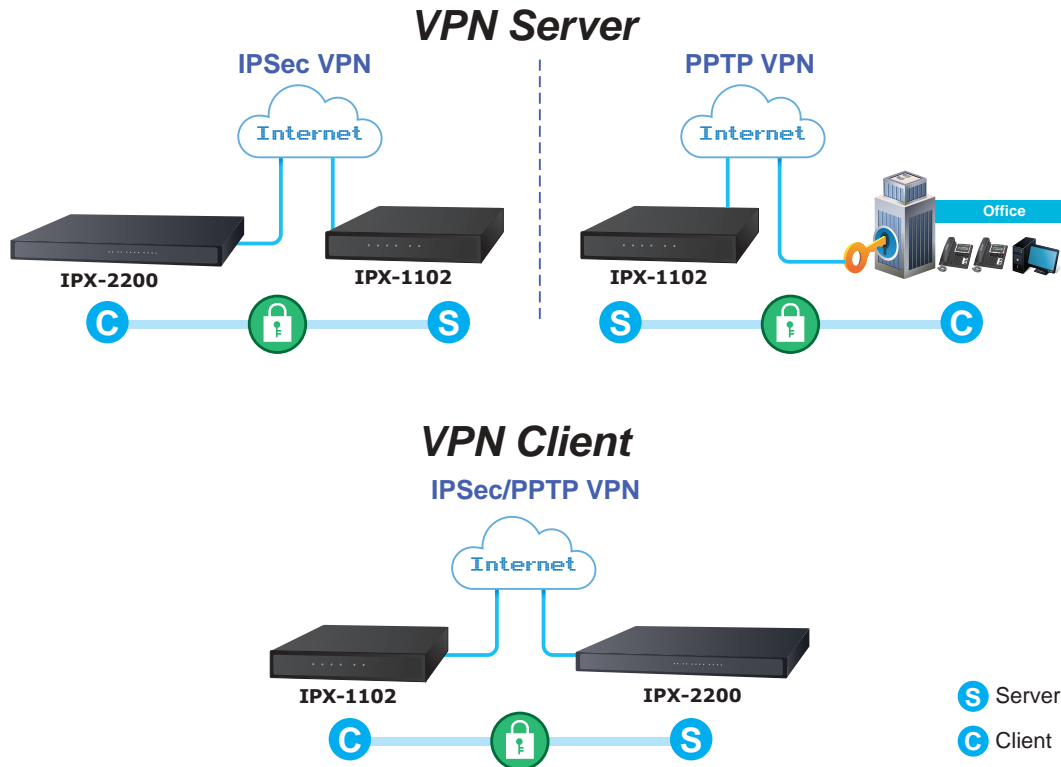
**Call Features**

- Call Back, Call Forward, Call Group
- Call Hold, Call Paging and Intercom
- Call Park, Call Pickup, Call Queue
- Call Record, Call Route, Blind Transfer
- Attend Transfer, Call Waiting
- Caller ID, Dial by Name
- Customized IVR, On-hold Music, Transfer
- 30 Conference attendees
- One-to-One Video Call

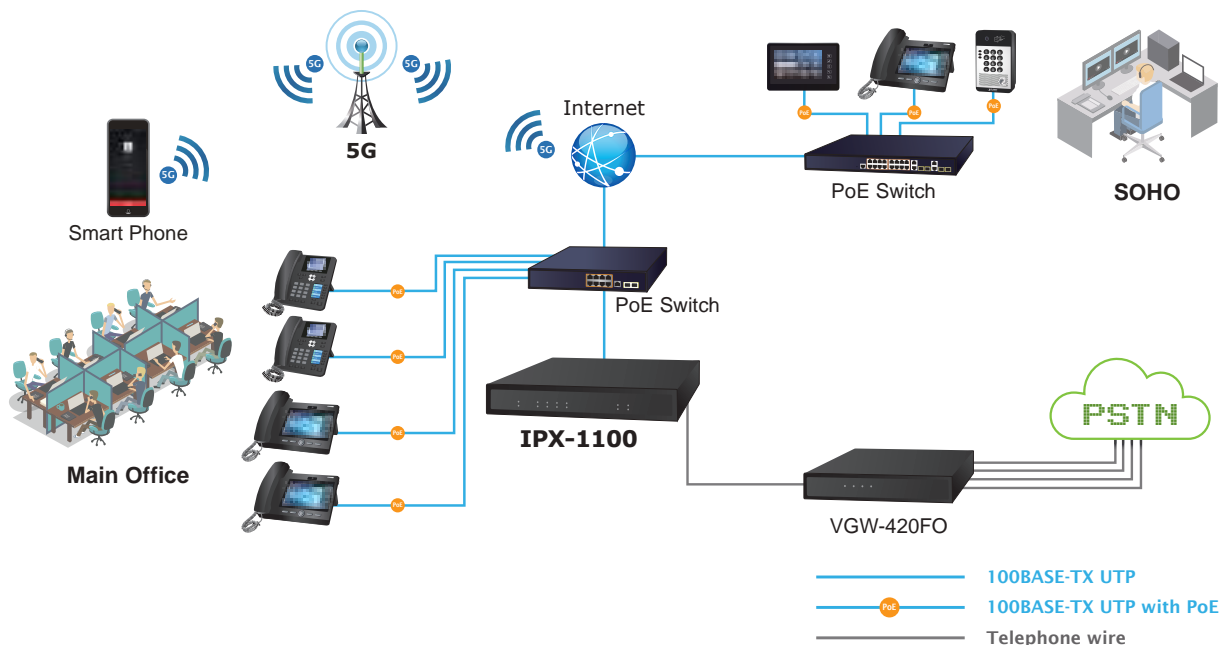
## Applications

### Full Security with VPN Support

The IPX-1100/IPX-1102 guarantees robust security and cost-effective connectivity for geographically dispersed offices within an organization, establishing a unified virtual network. This advanced VPN technology is not only ideal for connecting corporate branches but also empowers individual internet users seeking identity protection through proxy servers. With both VPN server and client functions, the IPX-1100/IPX-1102 provides users with secure login capabilities, ensuring full security."



The IPX-1100/IPX-1102 provides the essential features you need for business-class voice communications in an easy-to-manage solution. Designed for medium-sized businesses with branch offices, the IPX-1100/IPX-1102 voice, conferencing, mobility, voice gateway, and IP PBX services are created on a single appliance.



## Specifications

	IPX-1100	IPX-1102
Model	Internet Telephony PBX system (100 SIP User registrations)	Internet Telephony PBX system with 2-port FXO (100 SIP User registrations)
<b>Hardware Specifications</b>		
WAN	1 x 10/100BASE-T RJ45 port for WAN, connecting to broadband modem or a WAN router	
LAN	1 x 10/100BASE-T RJ45 port for LAN, connecting to a LAN switch	
FXO Interface	-	2 built-in FXO
USB	1 port for external storage device (up to 2T Bytes) File system format: FAT16, FAT32, EXTFAT, NTFS, EXT3, EXT4	
Console Port	1 port (baud rate: 115200)	
Reset Key	Press and hold for more than 5 secs to initiate a system reset to default settings	
<b>Protocols and Standard</b>		
Standard	SIP 2.0 (RFC 3261), IAX2	
Protocols	RFC 768 UDP	
	RFC 793 TCP	
	RFC 5246 TLS	
	RFC 3711 SRTP	
	RFC 826 ARP	
	RFC 1034, 1035 DNS	
	RFC 1631 NAT	
	RFC 2068 HTTP	
	RFC 2131 DHCP	
	RFC 2516 PPPoE	
	RFC 3261, RFC 3311, RFC 3515	
	RFC 3265, RFC 3892, RFC 3361	
	RFC 3842, RFC 3389, RFC 3489	
	RFC 3428, RFC 2327, RFC 2833	
	RFC 2976, RFC 3263	
	IPv4, IPv6, VLAN, DHCP, PPPoE, DDNS, NTP, SNTP, TFTP, SSH, HTTPS, LDAP	
	Audio Codecs	G.711-Ulaw, G.711-Alaw, G.722, G.726, G.729, GSM, SPEEX, Opus, AMR and AMR-WB
Video Codec	H.261, H.263, H.263+, H.264 and VP8	
Fax over IP	T.38 Fax (pass-through) Note: T.38 support is dependent on fax machine, SIP provider and network, transport resilience	
Voice Processing	DTMF detection and generation RFC 4733, SIP info, in-band and Auto	
<b>Internet Sharing</b>		
Network Features	DDNS client (Planet DDNS and easy DDNS)	
	DHCP server/SNMP v1/v2	
	IEEE 802.1Q VLAN	
	IP assignment (DHCP/Static)	
	IPv4/IPv6	
	Manual configuration of static route table	
	Troubleshooting (ping and traceroute)	
Security Features	VPN server and VPN client	
	Mitigates SIP Register DoS attacks	
	Prevents Abort Invite DoS attacks	
	Prevents SSH Login DoS attacks	
	Firewall and enhances HTTPS connection	

Features		
PBX Features	SIP Register with UDP/TCP/TLS/SRTP	
	Phone Auto-Provisioning	
	One Touch Recording	
	Mobility Extension	
	Black List	
	BLF (Busy Lamp Field)	
	CDR (Call Detailed Record)	
	Conference Room	
	DID (Direct Inward Dialing Number)	
	DISA (Direct Inward System Access)	
	DNIS (Dialed Number Identification Service)	
	SRTP (Secure Real time Transport Protocol)	
	DND (Do Not Disturb)	
	FOP (Flash Operation Panel) Status Monitoring	
	IVR (Interactive Voice Responses)	
	Follow Me, Call Spy and PIN Set	
	Distinctive Ringtone	
	Multi-language System Prompt	
	Multiple Language of GUI	
	Phone Book, Speed Dial	
LDAP Server for phonebook		
Record Files Download		
Ring Group, SIP Trunk		
Skype for SIP, Smart DID, System Log		
T.38 fax (pass-through), voicemail and voicemail to e-mail		
Time-based Rule		
PBX log, web access log and PBX debug log		
Call Features	Call Back, Call Forward, Call Group	
	Call Hold, Call Paging and Intercom	
	Call Park, Call Pickup, Call Queue	
	Call Record, Call Route, Blind Transfer	
	Attend Transfer, Call Waiting	
	Caller ID, Dial by Name	
	Customized IVR, On-hold Music, Transfer	
	30 Conference attendees	
	One-on-One Video Call	
System Capacity		
System Capacity	50 simultaneous calls	
	Up to 100 IP phone registers/extensions	
	Recording and Voicemail: 400 hours	
Network and Configuration		
Access Mode	Static IP, DHCP	
LED Indications	PWR: 1, LNK(Green)	PWR: 1, LNK(Green)
	SYS: 1, LNK/ACT (Green)	SYS: 1, LNK/ACT (Green)
	WAN: 1, LNK/ACT (Green)	WAN: 1, LNK/ACT (Green)
	LAN: 1, LNK/ACT (Green)	LAN: 1, LNK/ACT (Green)
	-	Analog Interface 1/2: FXO (Red)
Dimensions (W x D x H)	167.6 x 115 x 28.8 mm	
Operating Environment	0~40 degrees C, 5~95% humidity	
Power Requirements	DC 12V, 1A	
EMC/EMI	CE, FCC Class B, RoHS	

## Ordering Information

IPX-1100	Internet Telephony PBX system (100 SIP user registrations)
IPX-1102	Internet Telephony PBX system with 2-port FXO (100 SIP user registrations)

## Related Products

IPX-2200	Internet Telephony PBX System (200 SIP user registrations)
VIP-1140PT	High Definition Color PoE IP Phone
VIP-1260PT	High Definition Color PoE Gigabit IP Phone
ICF-1900	High Definition Touch Color Screen Smart Media Android SIP Conference Phone
VGW-420FO	4-Port SIP VoIP Gateway (4 FXO)
VGW-420FS	4-Port SIP VoIP Gateway (4 FXS)

### PLANET Technology Corporation

11F., No.96, Minquan Rd., Xindian Dist., New Taipei City 231,  
Taiwan (R.O.C.)

Tel: 886-2-2219-9518

Email: sales@planet.com.tw

Fax: 886-2-2219-9528

www.planet.com.tw



PLANET reserves the right to change specifications without prior notice. All brand names and trademarks are property of their respective owners. Copyright © 2023 PLANET Technology Corp. All rights reserved.

**IPX-1100/IPX-1102**