

# 5G NR Cellular + Wi-Fi 6 AX 1800 Dual Band + 1-Port 1000X SFP VPN Security Router



## Powerful 5G NR and Wi-Fi 6 Enterprise Network Solution

The innovation of the Internet has created tremendous worldwide opportunities for e-business and information sharing. It has become essential for businesses to focus more on network security issues. The demand for information security and wireless connection has become the primary concern for the enterprises. To fulfill this demand, PLANET has launched the all-in-one VR-300FW-NR 5G NR Cellular + Wi-Fi 6 VPN Security Router. It is able to provide ultra-fast broadband access with 5G cellular network. The VR-300FW-NR also features five Ethernet ports (4 LANs and 1 LAN/WAN), one Fiber port (LAN/WAN), IEEE 11ax Wi-Fi capability, and VPN technology bundled in a compact yet rugged metal case. It establishes a fast cellular connection between the Ethernet equipped devices. The VR-300FW-NR is an integrated 5G NR and Wi-Fi 6 solution for System Integrators, ISPs and Enterprises.

The VR-300FW-NR also carries several main categories across your network security deployments: Copper/fiber WAN interface, cybersecurity, SPI firewall security protection, policy auditing (content filtering, VPN tunnel and MAC/IP filtering), AP controller, captive portal, RADIUS and easy management (Setup Wizard, DHCP Server and Dashboard). Furthermore, its Dual-WAN Failover, Outbound Load Balance and High-Availability features can improve the network efficiency while the web-based interface provides friendly and consistent user experience.



## Highlights

- Global 5G NR (NSA/SA)/4G LTE network with SIM design for cellular network redundancy
- Automatic failover between 5G NR and Gigabit WAN
- Complies with IEEE 802.11ax and IEEE 802.11a/b/g/n/ac standards
- Dual-WAN failover and dual-WAN load balancing
- One 1000BASE-X SFP slot for WAN interface
- SSL VPN and robust hybrid VPN (IPSec/PPTP/L2TP over IPSec)
- Stateful Packet Inspection (SPI) firewall and content filtering
- Blocks DoS/DDOS attack, port range forwarding
- High Availability, AP Controller, Captive Portal and RADIUS
- IPv6, SNMP, PLANET DDNS and Universal Network Management System
- Planet NMS controller system and CloudViewer app supported

## Hardware

- 1 1000BASE-X SFP slot
- 5 10/100/1000BASE-T RJ45 ports, 1 undefined Ethernet port (LAN/WAN) for dual-WAN function
- 1 x SIM card slot
- 1 USB port for system configuration backup and restoration
- Reset button and fanless design
- Desktop installation or rack mounting

## Cellular Interface

- Supports multi-band connectivity with 5G NR (NSA/SA), LTE-FDD, LTE-TDD, and WCDMA
- Built-in SIM and broadband backup for network redundancy
- Four detachable antennas for 5G NR connection
- LED indicators for signal strength and connection status
- Global Navigation Satellite System (GNSS)

## RF Interface Characteristics

- Features 2.4GHz (802.11b/g/n/ax) and 5GHz (802.11a/n/ac/ax) dual band for carrying high load traffic
- 2T2R MIMO technology for enhanced throughput and coverage
- Provides multiple adjustable transmit power control
- High speed up to 1.8Gbps (600Mbps for 2.4GHz or 1200Mbps for 5GHz) wireless data rate

### Automatic Failover between 5G NR and Dual WAN

Designed with 5G NR, dual WAN interfaces (fiber and copper), 1000X SFP and Gigabyte Ethernet, the VR-300FW-NR ensures Internet connectivity by featuring failover functionality between 5G NR and dual WAN. It provides flexibility to set priority for 5G NR or dual WAN connection. When the main WAN interface fails, the secondary WAN interface will automatically back up the connection to ensure always-on connectivity.



### Ultra-Fast Speed 4G/5G Network\*

The VR-300FW-NR supports 5G NR DL (downlink) speeds higher than 2.4 Gbps and 4G LTE DL speeds of up to 1 Gbps. The wide spectrum bandwidth accelerates internet speeds and reduces network latency for premium and time-sensitive connectivity services. It also supports multi-band connectivity including LTE FDD/TDD, WCDMA and GSM for a wide range of applications.

\*The real 5G NR/4G LTE data rate is dependent on local service provider.

## Download speed up to 2.4 Gbps



### GPS Included

The VR-300FW-NR is equipped with (global positioning system) feature. It adapts 5G-NR technology to incorporate multiple global navigation systems (GPS/ GLONASS/BeiDou/Galileo/QZSS). It helps to position location of cellular gateway based on a network of satellites that continuously transmits necessary data. More signals transmitted from more satellites can triangulate its location on the ground, meaning any location can be easily tracked.

### GNSS Positioning



### IP Routing Feature

- Static Route
- Dynamic Route
- OSPF

### Firewall Security

- Cybersecurity
- Stateful Packet Inspection (SPI) firewall
- Blocks DoS/DDoS attack
- Content Filtering
- MAC Filtering and IP Filtering
- NAT ALGs (Application Layer Gateway)
- Blocks SYN/ICMP Flooding

### VPN Features

- IPsec/Remote Server (Net-to-Net, Host-to-Net), GRE, PPTP Server, L2TP Server, SSL Server/Client (Open VPN)
- Max. Connection Tunnel Entries: 60 VPN tunnels.
- Encryption methods: DES, 3DES, AES, AES-128/192/256
- Authentication methods: MD5, SHA-1, SHA-256, SHA-384, SHA-512

### Networking

- Outbound load balancing
- Failover for dual-WAN
- High Availability
- Captive Portal
- RADIUS Server/Client
- Static IP/PPPoE/DHCP client for WAN
- DHCP server/NTP client for LAN
- Protocols: TCP/IP, UDP, ARP, IPv4, IPv6
- Port forwarding, QoS, DMZ, IGMP, UPnP, SNMPv1, v2c, v3
- MAC address clone
- DDNS: PLANET DDNS, Easy DDNS, DynDNS and No-IP

### Others

- Setup wizard
- Dashboard for real-time system overview
- SFP-DDM (Digital Diagnostic Monitor)
- Supported access by HTTP or HTTPS
- Auto reboot
- PLANET NMS System and Smart Discovery Utility for deployment management
- PLANET CloudViewer app for real-time monitoring

**Flexible WAN interface Enables Extension of Network Deployment**

The VR-300FW-NR provides both copper and fiber connectors for WAN interface. With one SFP slot, it supports fiber extension for FTTX application. It allows the administrator to flexibly choose the suitable SFP transceiver according to the transmission distance required to extend the network efficiently. The distance can be extended from 550 meters to 2 kilometers (multi-mode fiber) and 10/20/30/40/50/60/70/120 kilometers (single-mode fiber or WDM fiber). They are well suited for applications to uplink to backbone switch and monitoring center in long distance.

**Wireless 11ax Brings Excellent Data Link Speed**

The VR-300FW-NR is designed with high power amplifier and 2 highly-sensitive antennas which provide stronger signal and excellent coverage even in the wide-ranging or bad environment. With adjustable transmit power option, the administrator can flexibly reduce or increase the output power for various environments, thus reducing interference to achieve maximum performance. Equipped with the next-generation Wi-Fi 6 (802.11ax) wireless network standard, the total bandwidth reaches 1800Mbps, and the 2-stream transmission technology improves the transmission efficiency of multiple devices, making AR/VR/IoT applications smoother. The IEEE 802.11ax also optimizes MU-MIMO (Multi-User MIMO) mechanism to serve multiple devices simultaneously.

**Wi-Fi Deployments and Authentication with Simplified Management**

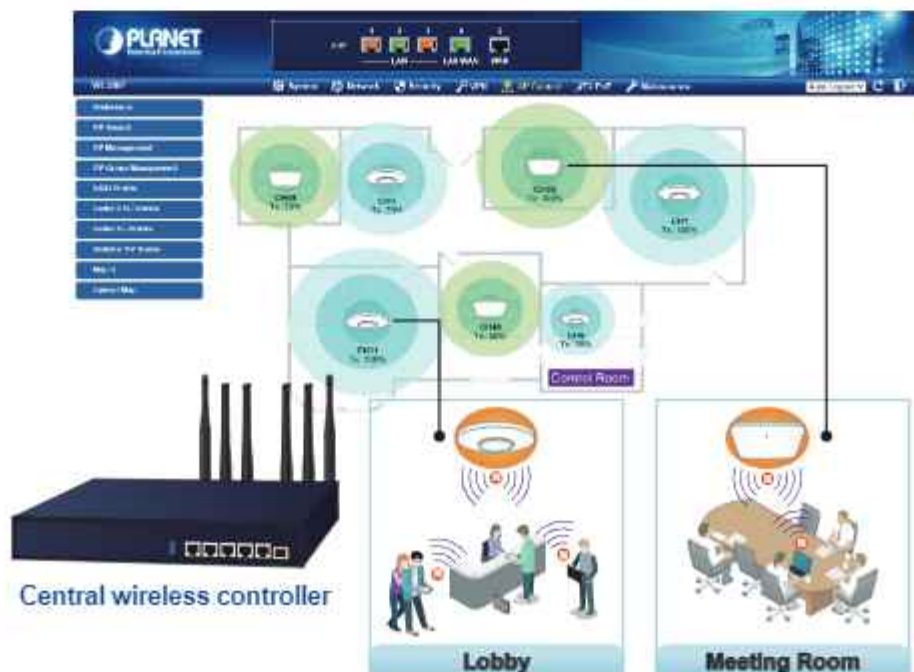
The VR-300FW-NR provides a built-in AP Controller, Captive Portal, RADIUS and a DHCP server to facilitate small and medium businesses to deploy secure employee and guest access services without any additional server. The VR-300FW-NR can offer a secure Wi-Fi network with easy installation for your business.

**Captive Portal**



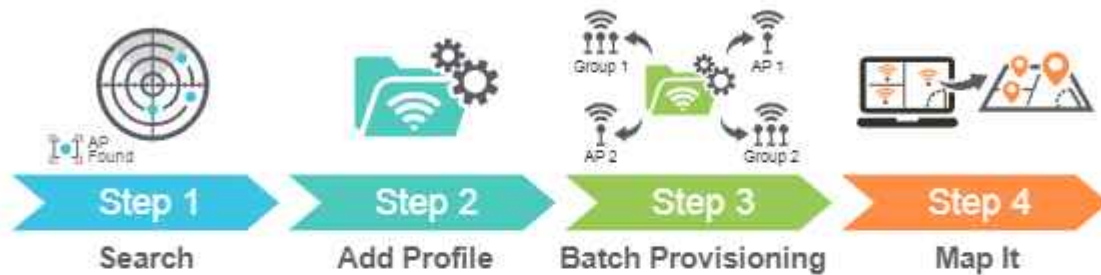
**Centralized Remote Control of Managed APs\***

The VR-300FW-NR provides centralized management of PLANET Smart AP series via a user-friendly Web GUI. It's easy to configure AP for the wireless SSID, radio band and security settings. With a four-step configuration process, different purposes of wireless profiles can be simultaneously delivered to multiple APs or AP groups to minimize deployment time, effort and cost.



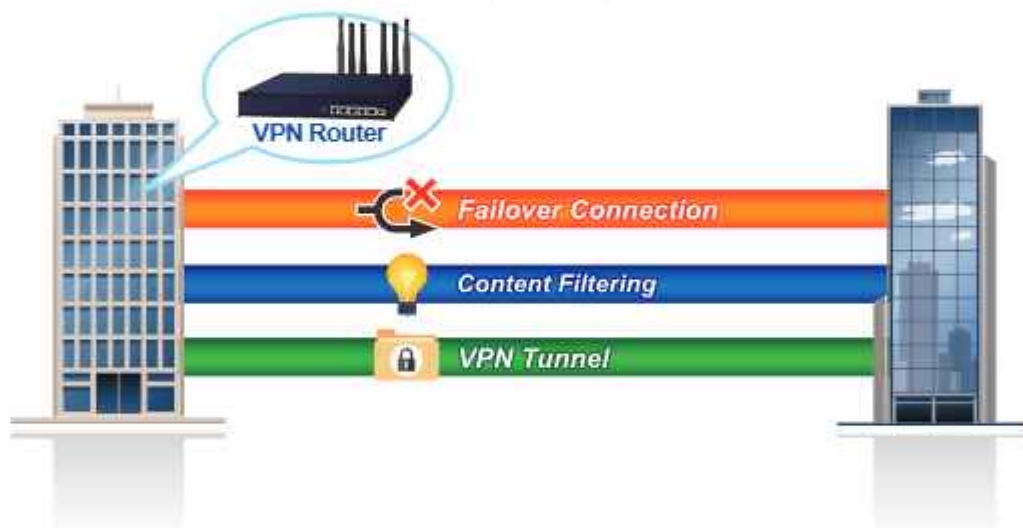
For example, to configure multiple Smart APs of the same model, the VR-300FW-NR allows clustering them to a managed group for unified management. According to requirements, wireless APs can be flexibly expanded or removed from a wireless AP group at any time. The AP cluster benefits bulk provision and bulk firmware upgrade through single entry point instead of having to configure settings in each of them separately.

## Simplified Cluster Management with 4 Steps



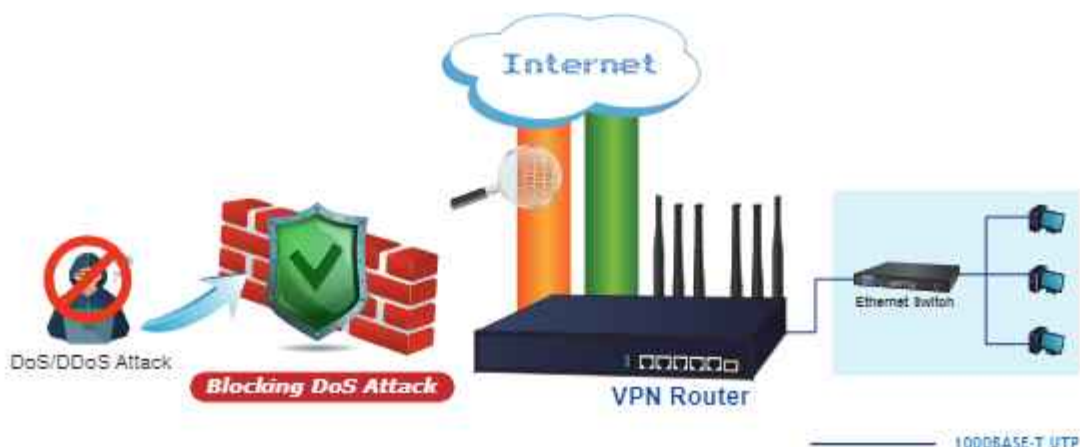
### Ideal High-Availability VPN Security Router Solution for SMBs

The VR-300FW-NR provides complete data security and privacy for accessing and exchanging the most sensitive data, built-in IPSec VPN function with DES/3DES/AES encryption and MD5/SHA-1/SHA-256/SHA-384/SHA-512 authentication, and GRE, SSL, PPTP and L2TP server mechanism. The full VPN capability in the VR-300FW-NR makes the connection secure, more flexible, and more capable.



### Excellent Ability in Threat Defense

The VR-300FW-NR with built-in SPI (stateful packet inspection) firewall and DoS/DDoS attack mitigation functions provides high efficiency and extensive protection for your network. Thus, virtual server and DMZ functions can let you set up servers in the intranet and still provide services to the internet users.



1000BASE-T UTP

**Cybersecurity Network Solution to Minimize Security Risks**

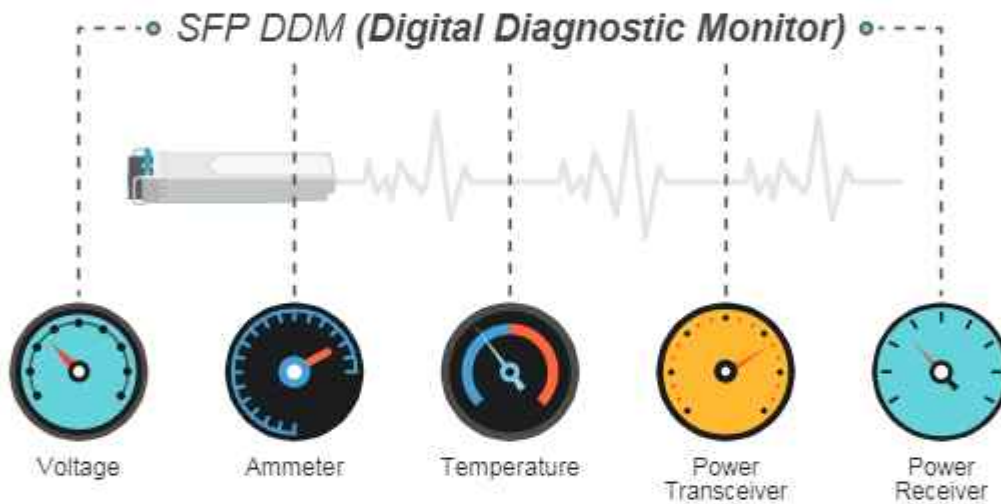
The cybersecurity feature included to protect the switch management in a mission-critical network virtually needs no effort and cost to install. For efficient management, the VR-300FW-NR is equipped with HTTPS web and SNMP management interfaces. With the built-in web-based management interface, the VR-300FW-NR offers an easy-to-use, platform independent management and configuration facility. The VR-300FW-NR supports SNMP and it can be managed via any management software based on the standard SNMP protocol.

**Maximizing Work Efficiency with PLANET SD-WAN Gateway**

PLANET VR-300FW-NR incorporated in SD-WAN (software-defined wide area network) function can greatly increase WAN optimization for multiple WAN links to be managed. With SD-WAN, users can connect any application across all available network connections at every site. It improves application performance and provides a high-quality user experience for increasing business productivity and reducing IT costs.

**Intelligent SFP Diagnosis Mechanism**

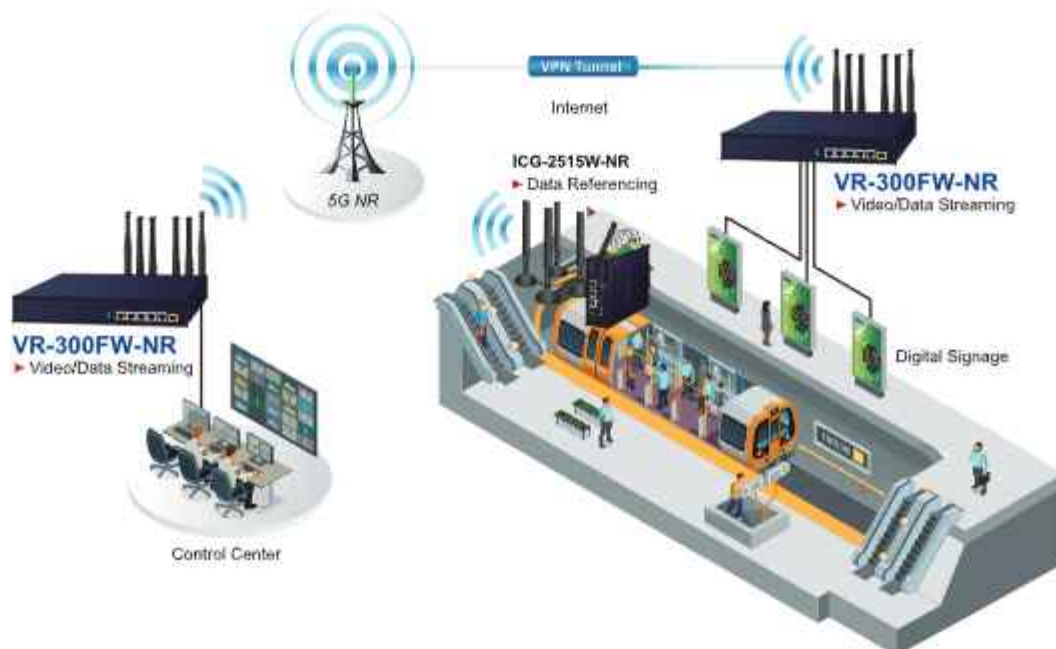
The VR-300FW-NR supports SFP-DDM (digital diagnostic monitor) function that greatly helps network administrator to easily monitor real-time parameters of the SFP, such as optical output power, optical input power, temperature, laser bias current, and transceiver supply voltage.



**Applications**

**5G NR Cellular Communication Solution**

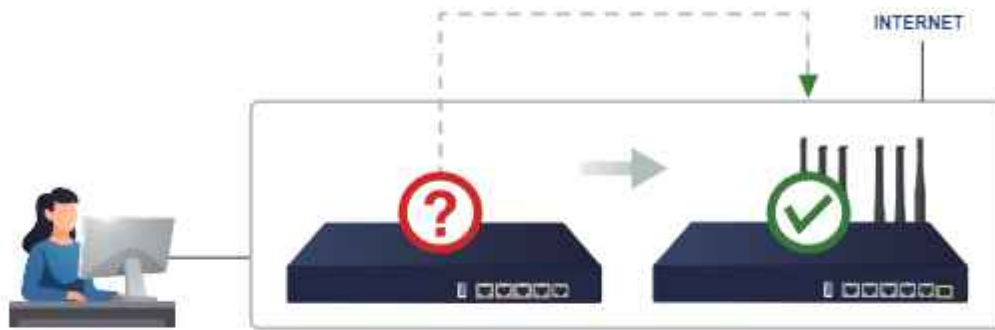
PLANET VR-300FW-NR adopts 5G NR cellular technology and thus breaks the 100m limitation of RJ45 transmission. To avoid data loss affected by an unexpected breakdown connection on the part of ISP, the VR-300FW-NR provides failover functions and advanced features like VLAN, VPN, Modbus, and network management to cover more applications.



Improving Network Efficiency

The VR-300FW-NR with five Gigabit ports (WAN/LAN) is applicable to the small number of users ranging from 80 to 100, using a 13-inch desktop design. It provides higher performance with all Gigabit Ethernet interfaces which offer faster speeds for your network applications. The Gigabit user-defined interfaces flexibly fulfill the network requirements, and the High-Availability and Dual-WAN interfaces enable the VR-300FW-NR to support outbound load balancing and WAN fail-over features.

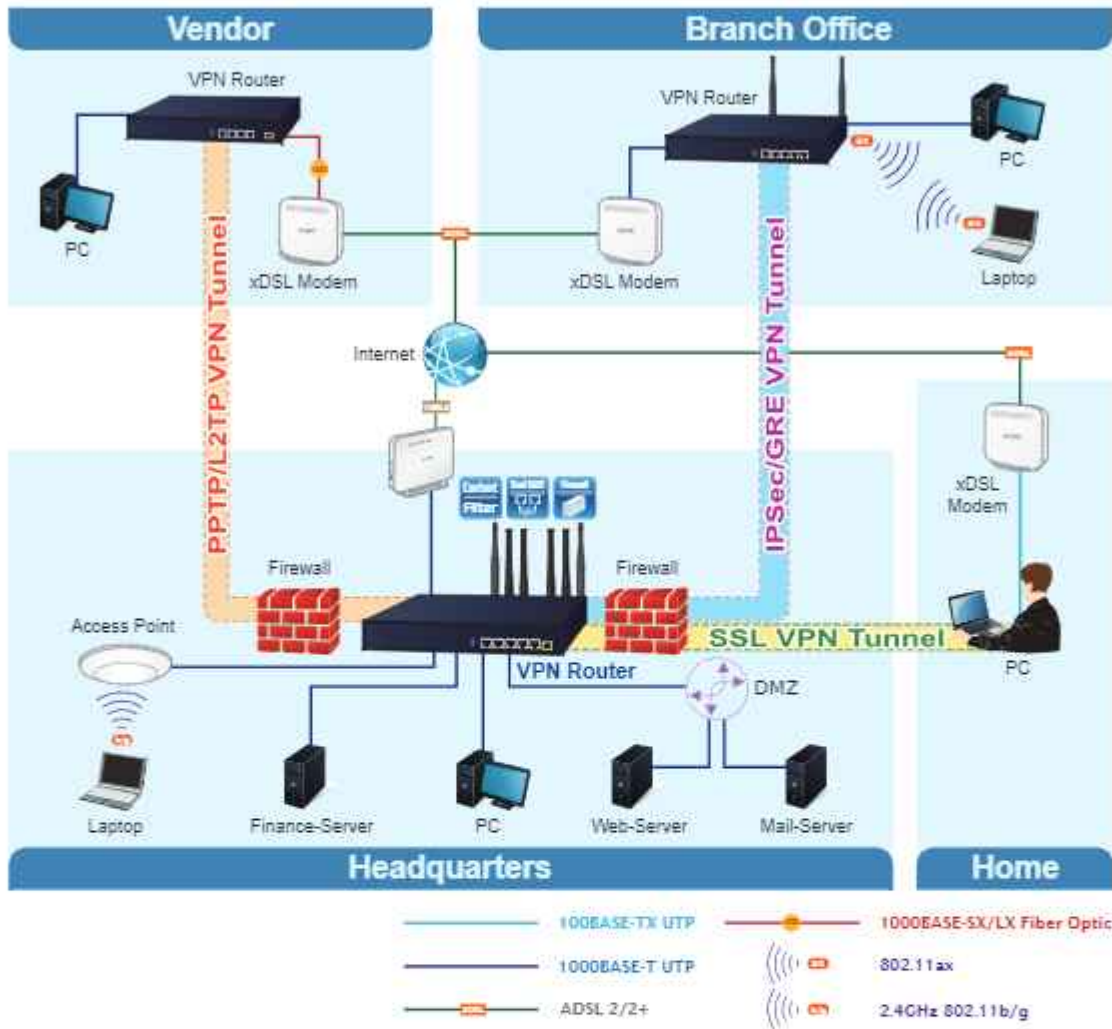
### High Availability



Furthermore, the VR-300FW-NR can connect dual IPv4/IPv6 WANs with up to two different ISPs and supports many popular security features including Content Filtering to block specific URL feature that can automatically resolve the IP address corresponding to all. Users' network can be easily managed by just typing the URL of the websites like Facebook, YouTube and Yahoo.



The VR-300FW-NR has link redundancy, MAC/IP filtering, outbound load balancing, QoS and many more functions to make the entire network system better. It creates a stable and qualified VPN security connection for many important applications such as VoIP, video conferencing and data transmission. The VR-300FW-NR's economical price with complete network security management features makes it an inevitable choice for the next-generation office network load balancer.



## Specifications

Product	<b>VR-300FW-NR</b>	
<b>Hardware Specifications</b>		
Ethernet	6 10/100/1000BASE-T RJ45 Ethernet ports ■ 4 LAN ports (Ports 1 to 4) ■ 1 WAN/LAN port (Port 5)	
Fiber	One 1000BASE-X SFP Gigabit Ethernet port (Port 6) Supports WAN port mode or LAN port mode over software configuration	
USB Port	1 USB 2.0 port for system configuration backup and restoration	
Reset Button	Reset to factory default	
LED Indicators	System: PWR, Internet, SIM, 5G, 2.4G (Green)	
Installation	Desktop installation or rack mounting	
Power Requirements	100-240V AC, 50/60Hz, auto-sensing	
Power Consumption / Dissipation	Max. 8.4 watts/21.82 BTU (No Loading) Max. 9.5 watts/32.39 BTU (Full loading)	
Weight	1508g	
Dimensions (W x D x H)	330 x 156 x 44 mm, 1U height	
Enclosure	Metal	
<b>Multi Band Supports</b>		
5G SUB6 BANDS	NSA	n1/n2/n3/n5/n7/n8/n12/n13/n14/n15/n20/n25/n26/n29/n30/n38/n40/n41/n48/n66/n70/n71/n75/n76/n77/n78/n79
	SA	n1/n2/n3/n5/n7/n8/n12/n13/n14/n15/n20/n25/n26/n29/n30/n38/n40/n41/n48/n66/n70/n71/n75/n76/n77/n78/n79
LTE BANDS	FDD	B1/B2/B3/B4/B5/B7/B8/B12/B13/B14/B17/B18/B19/B20/B25/B26/B28/B29/B30/B32/B66/B71
	TDD	B34/B38/B39/B40/B41/B42/B43/B48
	LAA	B46
UMTS BANDS	FDD	B1/B2/B8/B4/B5/B19 MAX DL SPEED: DL 3.4Gbps, UL 550 Mbps GNSS: GPS/ GLONASS/ BDS/ Galileo/ QZSS
	TDD	MAX DL SPEED DL 2.4 Gbps, UL 900 Mbps
WCDMA	B1/B2/B3/B4/B5/B8	
GNSS	GPS L1+L5 dual bands/GLONASS/BeiDou/Galileo/QZSS	
Data Transmission Throughput	2.4Gbps (DL)/500Mbps (UL) for NR 1Gbps (DL)/200Mbps (UL) for LTE 42Mbps (DL)/5.76Mbps (UL) for HSPA+	
<b>Wireless</b>		
Standard	IEEE 802.11a/n/ac/ax 5GHz IEEE 802.11g/b/n/ax 2.4GHz	
Band Mode	2.4G & 5G concurrent mode	
Frequency Range	2.4GHz	America FCC: 2.412~2.462GHz Europe ETSI: 2.412GHz~2.472GHz
	5GHz	5.15GHz ~5.875GHz
Operating Channels	2.4GHz	America FCC: 1~11 Europe ETSI: 1~13
		America FCC: Non-DFS: 36, 40, 44, 48, 149,153,157,161,165 DFS: 52, 56, 60, 64, 100, 104, 108, 112, 116, 120, 124, 128, 132, 136, 140
	5GHz	Europe ETSI: Non-DFS: 36, 40, 44, 48, 149,153,157,161,165 DFS: 52, 56, 60, 64, 100, 104, 108, 112, 116, 120, 124, 128, 132, 136, 140  5GHz channel list will vary in different countries according to their regulations.
Channel Width	20MHz, 40MHz, 80MHz	

Data Transmission Rates	Transmit: 600 Mbps* for 2.4 GHz and 1200 Mbps* for 5 GHz Receive: 600 Mbps* for 2.4 GHz and 1200 Mbps* for 5 GHz *The estimated transmission distance is based on the theory. The actual distance will vary in different environments.
Transmission Power	11b: 23dbm+/- 1.5dbm @11Mbps 11g: 20dbm+/- 1.5dbm @54Mbps 11g/n: 20dBm +/- 1.5dbm @MCS7, HT20 17dBm@MCS7,HT40 11a: 19.5dBm +/- 1.5dbm @54Mbps 11a/n: 19.5dBm+/- 1.5dbm @MCS7, HT20 17dBm@MCS7, HT40 11ac HT20: 20+/-1.5dBm @MCS8 11ac HT40: 17+/-1.5dBm @MCS9 11ac HT80: 14.5+/-1.5dBm @MCS9 11ax HT20: 20+/-1.5dBm @MCS9 11ax HT40: 17 +/- 1.5dBm @MCS9 11ax HT80: 14.5 +/- 1.5dBm @MCS11
Encryption Security	WEP (64/128-bit) encryption security WPA / WPA2 (TKIP/AES) WPA-PSK / WPA2-PSK (TKIP/AES) / WPA3-PSK (TKIP/AES) 802.1x Authenticator
Wireless Advanced	Wi-Fi Multimedia (WMM) Auto channel selection Wireless output power management MAC address filtering
<b>Security Service</b>	
Firewall Security	Cybersecurity Stateful Packet Inspection (SPI) Blocks DoS/DDoS attack
ALG (Application Layer Gateway)	SIP, RTSP, FTP, H.323, TFTP
NAT	Port forwarding DMZ Host UPnP
Content Filtering	MAC filtering IP filtering Web filtering
Bandwidth Management	Outbound load balancing Failover for dual-WAN QoS (Quality of Service)
<b>Networking</b>	
Operation Mode	Routing mode
Routing Protocol	Static Route, Dynamic Route (RIP), OSPF
VLAN	802.1q Tag-based, Port-based, Multi-VLAN
Multicast	IGMP Proxy
NAT Throughput	Max. 900Mbps
Outbound Load Balancing	Supported algorithms: Weight
Protocol	IPv4, IPv6, TCP/IP, UDP, ARP, HTTP, HTTPS, NTP, DNS, PLANET DDNS, PLANET Easy DDNS, DHCP, PPPoE, SNMPv1/v2c/v3,
Key Features	HA (High Availability) Captive Portal RADIUS Server/Client AP Control
<b>VPN</b>	
VPN Function	IPSec/Remote Server (Net-to-Net, Host-to-Net) GRE PPTP Server L2TP Server SSL Server/Client (Open VPN)
VPN Tunnels	Max. 60
VPN Throughput	Max. 108Mbps
Encryption Methods	DES, 3DES, AES or AES-128/192/256 encrypting
Authentication Methods	MD5/SHA-1/SHA-256/SHA-384/SHA-512 authentication algorithm



## Ordering Information

VR-300FW-NR	5G NR Cellular + Wi-Fi 6 AX 1800 Dual Band + 1-Port 1000X SFP VPN Security Router
-------------	---

## Related Products

VR-300	Enterprise 5-Port 10/100/1000T VPN Security Router
VR-300P	Enterprise 4-Port 10/100/1000T 802.3at PoE + 1-Port 10/100/1000T VPN Security Router
VR-300F	Enterprise 4-Port 10/100/1000T + 1-Port 1000X SFP VPN Security Router
VR-300FP	Enterprise 4-Port 10/100/1000T 802.3at PoE + 1-Port 1000X SFP VPN Security Router
VR-300W5	Wi-Fi 5 AC1200 Dual Band VPN Security Router
VR-300PW5	Wi-Fi 5 AC1200 Dual Band VPN Security Router with 4-Port 802.3at PoE+
VR-300W6	Wi-Fi 6 AC1800 Dual Band VPN Security Router
VR-300PW6	Wi-Fi 6 AX1800 Dual Band VPN Security Router with 4-Port 802.3at PoE+
VR-300W6A	Wi-Fi 6 AX2400 2.4GHz/5GHz VPN Security Router
VR-300PW6A	Wi-Fi 6 AX2400 2.4GHz/5GHz VPN Security Router with 4-Port 802.3at PoE+
VR-100	5-Port 10/100/1000T VPN Security Router
IVR-100	Industrial 5-Port 10/100/1000T VPN Security Gateway
ICG-2515-NR	Industrial 5G NR Cellular Gateway with 5-Port 10/100/1000T
ICG-2515W-NR	Industrial 5G NR Cellular Wireless Gateway with 5-Port 10/100/1000T
ICG-2510W-LTE	Industrial 4G LTE Cellular Wireless Gateway with 5-Port 10/100/1000T
ICG-2510WG-LTE	Industrial 4G LTE Cellular Wireless Gateway with 5-Port 10/100/1000T
VCG-1500WG-LTE	Vehicle 4G LTE Cellular Wireless Gateway with 5-Port 10/100TX