

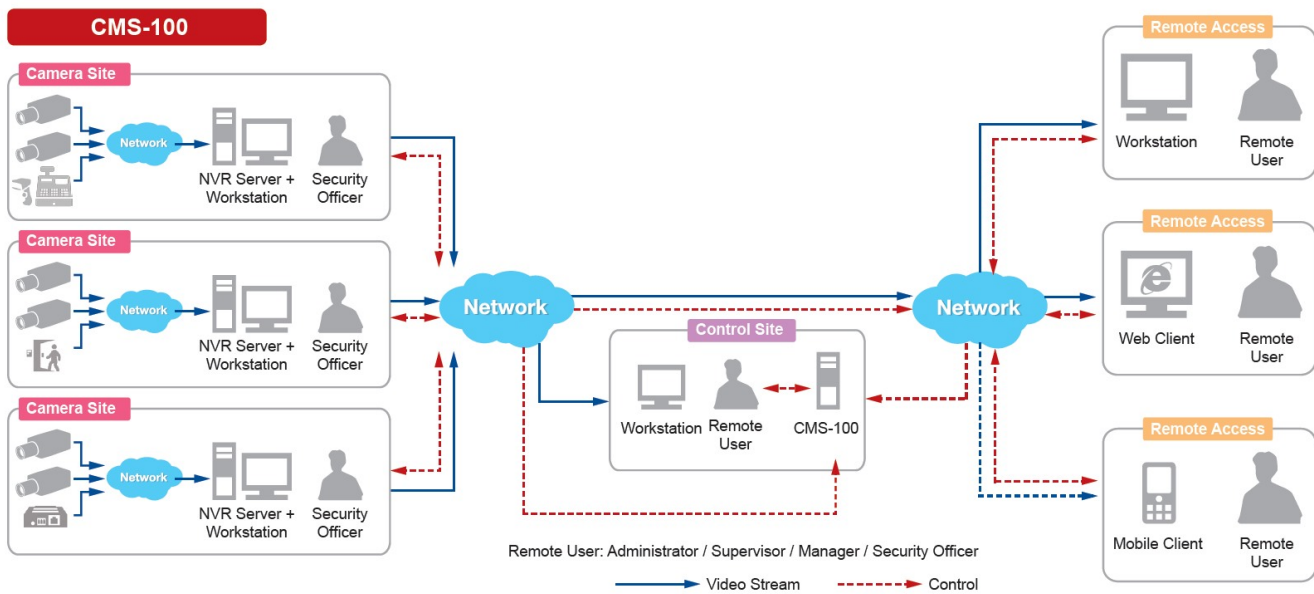
CMS-100

800-Channel Mini Standalone CMS



- Maximum Number of Video Devices: 800 (Free License: 100)
- Multi-Browser Support for Lite Web Client (CMS v.2.0.13)
- Location-based management with e-Map & Google Map
- Workstation, Web Client, Mobile Client
- Event trigger, response and notification
- Video export formats: RAW, AVI, MP4, EXE

▶ ****Solution Diagram****



▶ **Specifications**

Device

Product Type	Standalone CMS
--------------	----------------

Maximum Resolution	Support all ACTi cameras in all resolutions
Maximum Number of Video Devices	800
Maximum Number of Clients	Local: 1, Remote: 5

Hardware

CPU	Intel Core i7-6700TE
RAM	8GB

License

License required	Yes
Free License	100

Live View

Display Layout Mode	Local: 1, 3, 4, 5, 6, 8, 9, 10, 12, 16 Remote (IE client): 1, 3, 4, 5, 6, 8, 9, 10, 12, 16, 18, 24, 25, 35, 36, 48, 49, 64 Remote (Lite web client): 1, 3, 4, 5, 6, 8, 9, 10, 12, 16 Remote (Workstation): 1, 3, 4, 5, 6, 8, 9, 10, 12, 16, 18, 24, 25, 35, 36, 48, 49, 64, 81, 100, 121 (11x11), 144 (12x12), 169 (13x13), 196 (14x14), 225 (15x15) ** CMS display grid cells can be merged into different shape and size.
Fisheye Dewarping	Yes
Maximum display layout	225
Local Live View performance	Please check "Standalone NVR Performance Validator" (http://www.acti.com/SANVRPerformance)
Digital Zoom	Yes
Event Status	Display event status upon alarm or upon connection loss or recovery between server and client or when the allocated disk space is full
Instant Playback	Instant Playback in live view window
Embedded websites in Live View	Display and connect to pre-configured embedded website

Map

e-Map	Yes
Google Map	Yes
Layout	Area maps with camera icons, small live view windows, view linker, source linker, event trigger
Setup	e-Map image upload, camera positioning, vision angle and pointed direction of camera, view positioning, source positioning, extended devices for Point-of-sale (POS), Access Control, Network I/O, Car Park
PTZ Mode	Mouse PTZ mode to control e-Map video streams

PTZ

PTZ Control	PTZ Control, Speed Control
Joystick	USB based joystick supported

Video

Compression	H.265, H.264 (Baseline/ Main/ High profile), MJPEG, MPEG-4
-------------	--

Audio

Audio Type	2-way, Mic-in, Line-out
------------	-------------------------

Network

Network Protocol & Service	IPv4/v6, TCP, UDP, DHCP Client, HTTP, DNS, NTP, RTP, RTSP, SMTP, FTP, ICMP, ARP, UPnP, LDAP (client)
Ethernet Port	2 x Ethernet (1000 Base-T), RJ-45 connector

Recording

Manual Recording	Yes
Dual Stream Management	Yes

Search & Playback

Playback Control	Continuous forward and backward playback with speeds (1/64, 1/32, 1/16, 1/8, 1/4, 1/2, 1, 2, 4, 8, 16, 32, 64, 128, 256) or frame-by-frame, pause, stop
Synchronized Playback	up to 225 layout grids**
Recording Search	Search video recordings by time, events, channels, bookmarks, notifications and listed as clickable time-based thumbnails for full-size view and snapshot download
Smart Search	Smart search of recorded video by Motion Detection and Tamper
Video Export	RAW, AVI, MP4, EXE
Snapshot Export	BMP, JPEG, PNG

Event

Video Push	Support Video Push from ACTi Mobile Client devices
Event Trigger	Source loss and recovery, Schedule service start and stop, Disk full, Disk not found, Disk is available, Video motion detection, Passive IR sensor, External device through digital input, Sound detection, Video loss, Video Recovery, Network loss and recovery, Point-of-sale (POS) status, Network I/O status, Access Control status
Event Response	NVR: Play alert sound, Execute system command to activate other programs, E-mail notification with snapshots, Device: Pop-up window with live video, Switch to hotspot window, Switch to customize view, Play alert sound, Send video to TV Wall server

System

Permission control	Unlimited number of users, Active Directory, Customizable permissions for user groups, Account lockout, Automatic logout after idle, Playback password protected, Password validity period
Watchdog	Support
Client PC Operating System	Windows 7 SP1, Windows 8.1, Windows 10, Windows Server 2008 R2 SP1, Windows Server 2012 R2, Windows Server 2016
Server Operating System	Windows 7 Embedded, Windows 10 IoT (Optional)
Mobile Client Program	Mobile device application (ACTi Mobile Client) supports Live View, PTZ Control, Event/time based search and playback, Supported device(s) iOS, Android device
USB	6-Port USB 3.0
Language	Multi-Language

Integration

Supported NVR Servers	NVR3 based NVR: GNR series, INR series, MNR-3x0 ENR-series: ENR-010P, ENR-020P, ENR-130, ENR-190, ENR-2xx, ENR-3xx, ENR-4xx, MNR-1xx
Unified Solution	Fully compatible with ACTi cameras, encoders, central management system, TV wall and intelligent video surveillance software
GPS Position	Manual setting
ONVIF Compliant	Yes, Profile S (contains the officially ONVIF conformant software CMS 2)
Web Browser	IE 11 (Please verify that your computer meets the minimum system requirements for Internet Explorer from Microsoft website.), Lite web client: Microsoft Edge 80.0.361.66 (Normal mode) or newer, Google Chrome 71.0.3578, Firefox 64.0.2 or newer, Apple Safari 12.0.2 or newer
Third-party Integration	Point of Sale (POS), Access Control, Network I/O, Parking Management Station (PMS), (Various optional integrations requiring additional license)

Storage

System Drive	SSD, 128GB
Storage Bay	SATA, Max. 1 Disk(s) (without storage disks)
HDD Size	3.5"

Interface

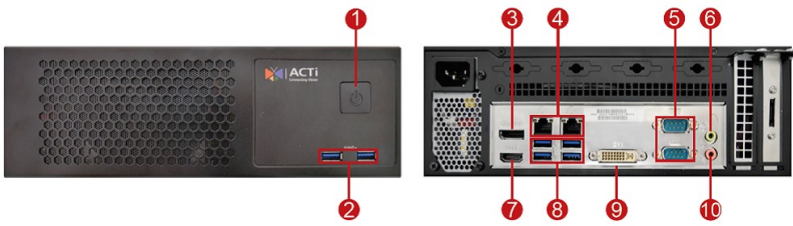
Serial Port	2 x RS-232
External Storage Interface	USB
Expansion Slots Available	1 x PCIe 3.0 (x16)
Local Access	USB keyboard & mouse
Local Display Interface	HDMI x 1, DVI x 1, Display Port x 1

General

Power Source	AC 100-240V
Power Supply	250W
Weight	3279g (7.229lb)
Dimensions	(W x H x D): 255mm x 88mm x 230mm (10" x 3.5" x 9.1")
Fan	Yes
Operating Temperature	0°C ~ 40°C (32°F ~ 104°F)
Operating Humidity	5% - 90% RH
Remote Access	Workstation, Web Client, Mobile Client
Approvals	CE, FCC, UL (for built-in power adapter)
Warranty	3 Year(s). For extended warranty offering, see http://www.acti.com/support/warranty

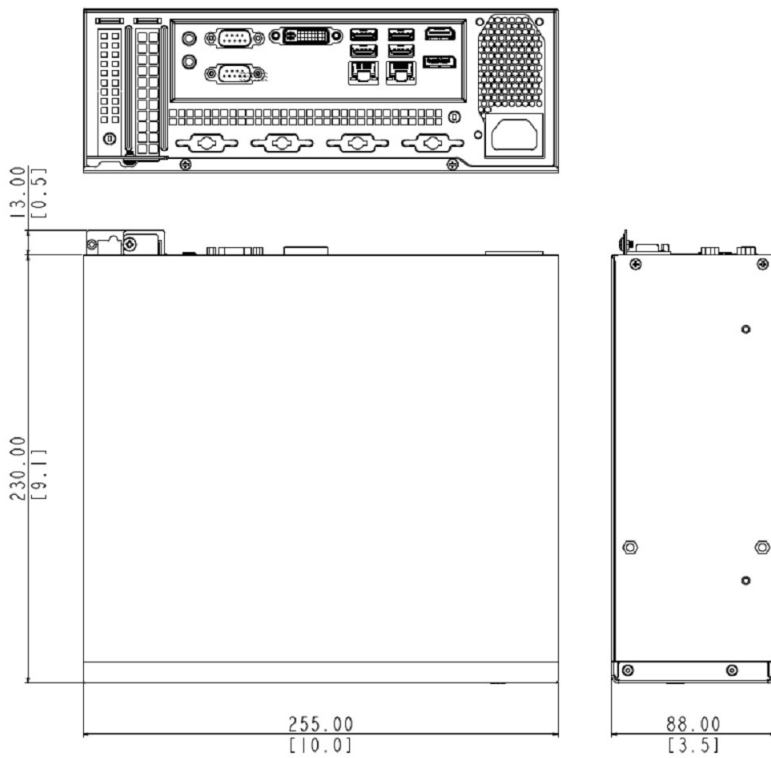
** The actual maximum number of channels may vary depending on the server/client PC performance and network throughput.

► Photo Indication



- 1 Power Button
- 2 USB 3.0 Port
- 3 Display Port
- 4 Ethernet Port
- 5 Serial Port
- 6 Audio Line-out
- 7 HDMI Port
- 8 USB 3.0 Port
- 9 DVI Port
- 10 Audio Mic-in

► Dimension Diagram



Unit: mm [inch]

▶ Related Products

Network & Storage Peripherals - Hard Disk

PHDD-4E15



M.2 256G System drive with Windows 10 and CMS 2 software for CMS-100

Other Accessories - Accessory Part

R718-B0002



Windows 10 LTSC 2019 License