

ACTi CMS 2.0

Quick Installation Guide

BEFORE YOU START

Thank you for using ACTi CMS 2.0 product. This guide will demonstrate the fundamentals of how to setup ACTi CMS 2.0 system. For detailed instructions, please refer to ACTi CMS 2.0 System Administrator's Manual from <http://www.acti.com/downloadcenter>

Pre-requisites before installation:

- Ensure that your CMS server computer meets the minimum system requirements.
- Uninstall other ACTi NVR or previous CMS server product on the CMS server computer, and manually delete **ACTi Corporation** program folder.
- Disable UAC function in Windows.
- Make sure your NVR servers have been upgraded to the latest version.

Customer Help Desk: <http://www.acti.com/CHD>
US/Canada Toll-free Helpline: 1-866-410-2284 (ACTi)

INSTALL THE SERVER

Step 1

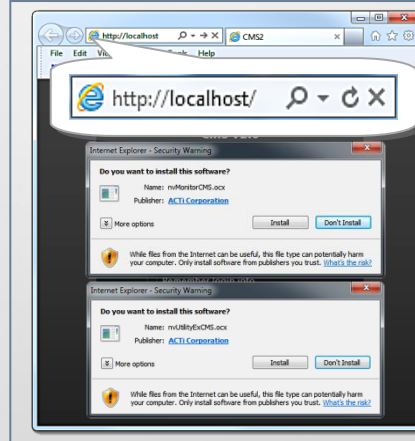


Execute install shield **ACTi_CMS_Server_v2.0.10.exe**.

Follow onscreen instructions to complete the installation.

ACCESS VIA BROWSER

Step 2



Wait for a few seconds until the server is ready.

Connect to <http://localhost/> via **Internet Explorer**.

Install two ACTi ActiveX control components.

LOGIN

Step 3



On **Login** page, enter:

- **Account:** **admin**
- **Password:** **123456**

Click "**Login**".

Note

If you meet any of the following problems, please try the methods below to fix it or contact our technical support team:

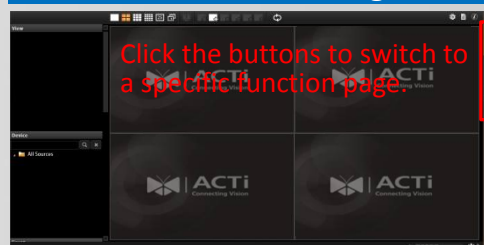
1. Cannot access Login page

- (1) Server is not ready, please wait for a while and connect again.
- (2) Your CMS server port is being used by another application, please close that application. For instance, if you use default port 80, Skype might have taken it.

2. Cannot install the ActiveX controls

- (1) Use **Internet Explorer** browser **32-bit** version.
- (2) The UAC function in **Windows Vista** or **Windows 7** restricts the installation of add-ons. Please turn off the UAC function.
- (3) Internet Explorer security settings restrict the installation of add-on components. Please turn off the browser's **ActiveX Filtering** function, add this CMS server site to **Trusted sites** list, and set the security level to **Medium-high** or lower.

Switch Function Pages



Click the buttons to switch to a specific function page.

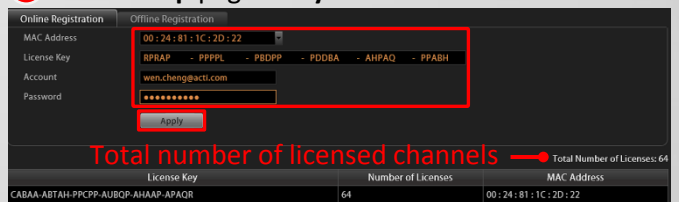


REGISTER THE LICENSE

Step 4

- 1 Make sure you have the information on hand: **License key** and **ACTi member account/password** (ACTi Member Center - <http://member.acti.com/>)

- 2 Go to **Setup** page → **System** tab → **License**

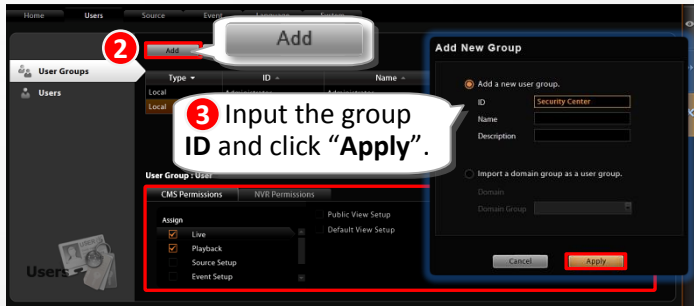


- 3 On **Online Registration** tab, fill in the required fields, and then click "**Apply**". Make sure the total of licensed channels is enough for the number of devices you are going to add to CMS server.

CREATE USERS

Step 5

- 1 Enter **Setup** page → **Users** tab → **User Groups**
- Add a user group:



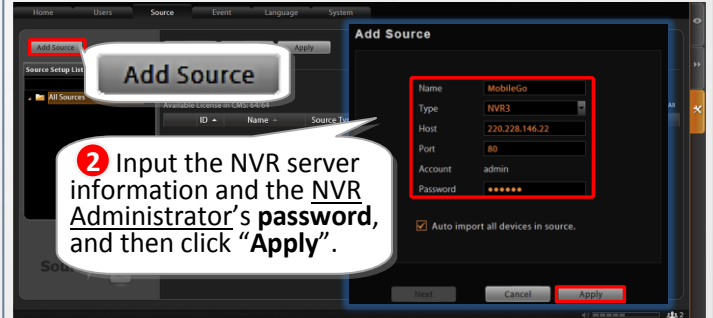
- 4 Select the newly-created group on the group list and modify its **CMS Permissions** and **NVR Permissions**.
 - 5 On **Users** tab, select **Users**
- Create a new user account:



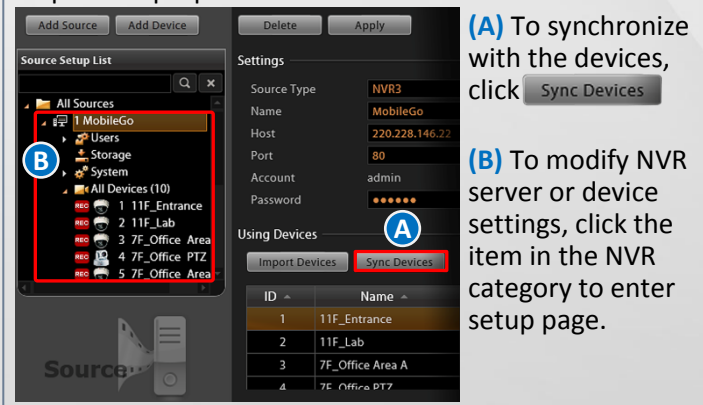
ADD NVR SERVERS

Step 6

- 1 Enter **Setup** page → **Source** tab, and click **“Add Source”**.



On **All Sources** tree, click by the NVR sever name to expand its properties.



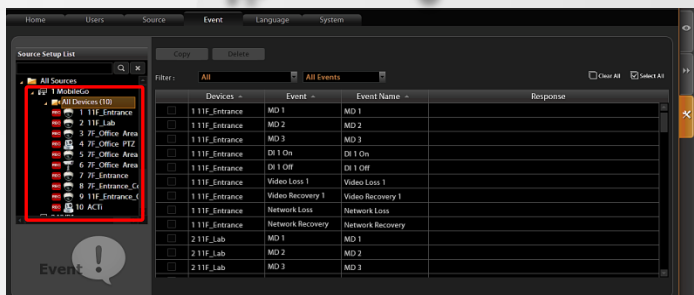
(A) To synchronize with the devices, click **Sync Devices**

(B) To modify NVR server or device settings, click the item in the NVR category to enter setup page.

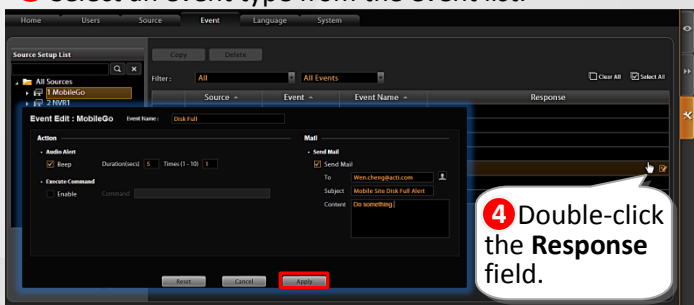
SET EVENT RULES

Step 7

- 1 Enter **Setup** page → **Event** tab
- 2 From **All Sources** tree, select your event source: an NVR server or a device .



- 3 Select an event type from the event list.

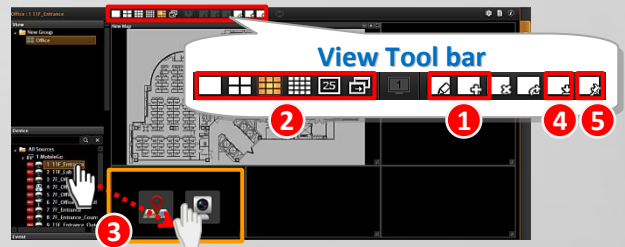


- 5 Configure the response settings on **Event Edit** window, and then click **“Apply”**.

CUSTOMIZE LIVE VIEWS

Step 8

- (1) Go to **Live View** page. On **View Tool** bar, click to create a new view, then click to enter edit mode.
- (2) Select a layout style.
- (3) ● To add a camera view: Pull a device from **Device** list to a channel.
● To add a map view: Select a channel and click , upload the map, drag the lower right corner to adjust map size, and add devices from **Device** list.
- (4) On **View Tool** bar, click to save the view.
- (5) Click to set this view as default live view.



VALIDATION

Step 9

- (1) On **Live View** page, check live streaming by selecting a view on **View** list or an NVR in **Device** list.
- (2) On **Live View** page, check the **Event** list for instant event notifications from devices.
- (3) On **Playback** page, check the recordings by selecting a view on **View** list or an NVR in **Device** list, drag the time bar and use the **Control** buttons to play.