
MEGAPIX® IVA/IVA+™

IP cameras with Intelligent Video Analytics



Wide-angle ATM views,
concealed installation.

Wide-angle ATM views, concealed installation.

DW's pinhole IP camera captures exceptionally clear video at 2.1MP/1080p at real-time 30fps at a close range, installed inside the ATM. Specifically designed for bank drive-throughs and ATM machines, the cameras are easy to install in a concealed or visible installation, with no shift over time, ensuring a wide field of view facial capture every time.



ATM Safety

DW's pinhole camera, designed to be installed either concealed or visible, can help you keep your equipment and your customers safe. With live and recorded video accessible instantly, and the IVA engine for automated alerts and rapid incident search, users can detect attempted tampering, vandalism or suspicious behavior like tailgating or shoulder surfing.



Discrete installation with no location restrictions

The pinhole camera is ideal for any application where discrete surveillance is needed. The camera has little to no impact on the interiors and its small size makes it easy to install even in constrained spaces such as ATMs, ticket and vending machines and health monitoring systems, making customers feel safe without undermining their sense of privacy.





Visible and concealed brackets

The camera comes with a mounting bracket that can be mounted hidden behind a wall or ceiling for concealed surveillance or tilted and placed on top of the mounting surface for a visible installation.



Wide-angle surveillance



The ultra-small sensor unit is equipped with an invisible pinhole lens, enabling thorough concealed monitoring. The lens showcases a horizontal angle up to 106.6°, allowing users to monitor large areas at a glance.



True Wide Dynamic Range (WDR)

DW's ATM pinhole camera uses true WDR technology to capture both under- and overexposed areas in the field of view, combining them in real-time to create a high-quality, better exposed image in a wide range of challenging lighting.



Image is under exposed



WDR image is clear and balanced

MEGAPIX IVA MEGAPIX IVA+

- Intrusion
- Line Crossing
- Counting Line
- Loitering
- Enter
- Exit
- Tamper
- Object Removed
- Tailgating
- Direction
- Stopped
- Appear
- Disappear
- Object Left



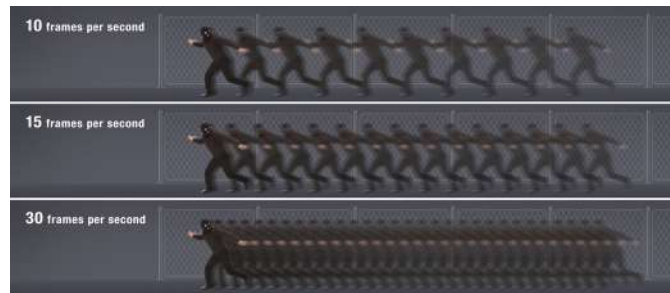
MEGApix® IVA™ analytics

MEGApix IVA cameras have a powerful engine to detect and classify people and vehicles in real-time. IVA+ license upgrade offers advanced video content analysis detection capabilities.



Fast framerate

The pinhole IP camera produces wide area views at up to real-time 30fps, providing smooth video with no loss of details between frames.



Main stream for recording.



Secondary stream for live viewing.



Simultaneous dual-streams

Use the camera's dual-stream feature to manage traffic and bandwidth on your network, with high-resolution stream for recording and standard-resolution stream for live monitoring.



Smart DNR[™] 3D digital noise reduction

Use DW's exclusive noise reduction technology to produce clearer color and monochromatic video in low-light without adding visual lag or ghost effects.



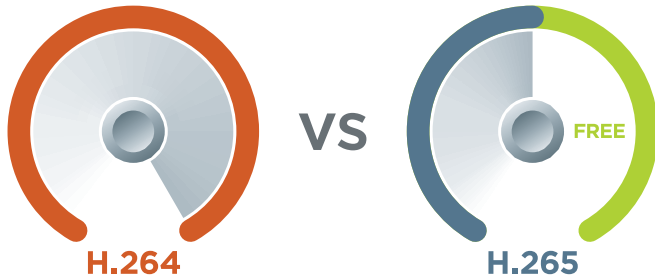
Digital noise in low light environments



Smart 3D DNR clarifies digital noise

Half the Space

Same display quality



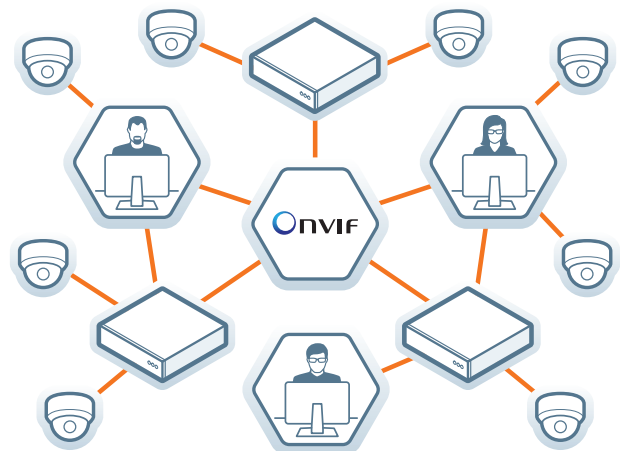
H.265 codec support

High-Efficiency video codec standards deliver 25% to 50% better data compression while maintaining video quality.



ONVIF[®] Conformant

DW's ONVIF conformant IP products allow you to bring our robust solutions to any surveillance system with other ONVIF components, creating a truly unique solution, to match your specific needs.





DW® IP cameras, analog cameras, NVRs, DVRs, network devices and management software sold and distributed worldwide are designed and developed in U.S.A. and Korea and manufactured in Korea, Vietnam and Taiwan.

Most DW products qualify for GSA Schedule Contracts and other government opportunities because they are NDA compliant.



Contact us:



California Office
16220 Bloomfield Avenue
Cerritos, California USA 90703
Hours: 8:00am - 5:00pm PST.



Florida Office
5436 West Crenshaw Street
Tampa, Florida USA 33634
Hours: 8:30am - 5:30pm EST.

Phone (Toll-Free).....1.866.446.3595
Fax.....1.813.888.9262
Customer Service (U.S.).....1.866.446.3595
Customer Service (International).....1.813.888.9555
Customer Service (French).....1.514.360.1309
Sales Email.....sales@digital-watchdog.com
Tech Support Email.....technicalsupport@digital-watchdog.com

☎ : 866.446.3595

✉ : sales@digital-watchdog.com

🌐 : www.digital-watchdog.com

