

# Blackjack<sup>®</sup> DX<sup>™</sup>

PoE Servers Powered by DW Spectrum

State of the art hyper-optimized video management platform designed for ease, speed and efficiency.

Blackjack<sup>®</sup> DX<sup>™</sup> slim desktop servers — Up to 480Mbps

|              |              |              |
|--------------|--------------|--------------|
| DW-BJDX31xxT | DW-BJDX51xxT | DW-BJDX71xxT |
|--------------|--------------|--------------|



Default Login Information for DW Spectrum<sup>®</sup> IPVMS

|                        |                             |
|------------------------|-----------------------------|
| Username: <b>admin</b> | Password: <b>admin12345</b> |
|------------------------|-----------------------------|

Default login information for the server's OS

|                         |                             |
|-------------------------|-----------------------------|
| Username: <b>dwuser</b> | Password: <b>Dw5pectrum</b> |
|-------------------------|-----------------------------|

## WHAT'S IN THE BOX

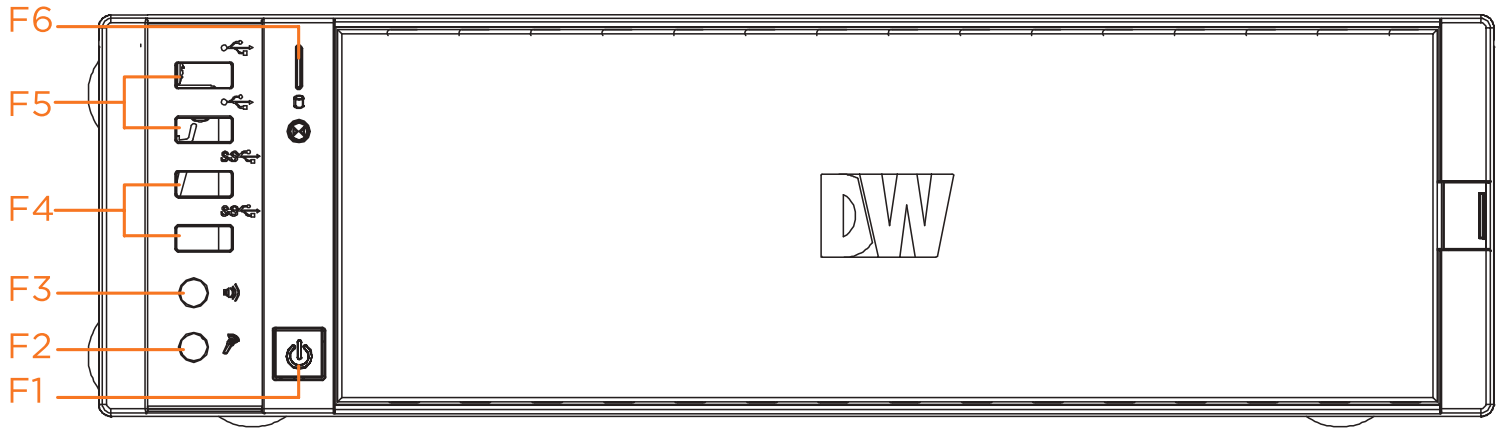
|                                  |  |   |                    |  |       |
|----------------------------------|--|---|--------------------|--|-------|
| Blackjack DX <sup>™</sup> server |  | 1 | Keyboard and mouse |  | 1 set |
| Quick start guide                |  | 1 | Power cable        |  | 1     |

**NOTE:** Download all your support materials and tools in one place.

1. Go to: <http://www.digital-watchdog.com/support-download/>.
2. Search your product by entering the part number in the 'Search by Product' search bar. Results for applicable part numbers will populate automatically based on the part number you enter.
3. Click 'Search'. All supported materials, including manuals, Quick start guides (QSG), software and firmware will appear in the results.

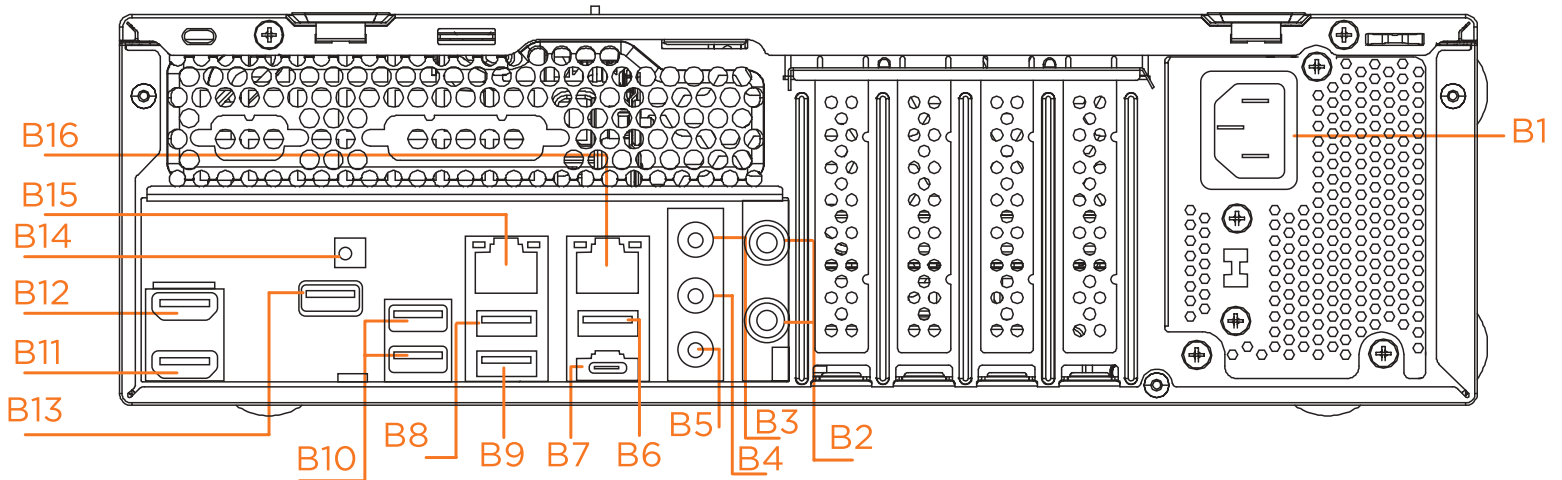
**Attention:** This document is intended to serve as a quick reference for initial setup.  
See the DW Spectrum<sup>®</sup> full manual for more information on features and functionality.

## BLACKJACK<sup>®</sup> DX<sup>™</sup> SLIM DESKTOP - FRONT PANEL



- F1 Power Button/Power LED
- F2 Mic in (3.5mm)
- F3 Audio out (3.5mm)
- F4 2x USB 3.0 ports
- F5 2x USB 2.0 ports
- F6 HDD Activity LED

## BLACKJACK<sup>®</sup> DX<sup>™</sup> SLIM DESKTOP - REAR PANEL



- |    |                          |     |                              |     |                       |
|----|--------------------------|-----|------------------------------|-----|-----------------------|
| B1 | Power port               | B7  | USB 3.2 Gen2x2 Type-C port   | B13 | USB 2.0 port          |
| B2 | Antenna ports (not used) | B8  | USB 2.0 port                 | B14 | BIOS flashback button |
| B3 | Microphone (pink)        | B9  | USB 3.2 Gen2 port            | B15 | 1G LAN RJ45 Port      |
| B4 | Line in (light blue)     | B10 | 2x USB 2.0 ports             | B16 | 2.5G LAN RJ45 port    |
| B5 | Front speaker (lime)     | B11 | True HD video output         |     |                       |
| B6 | USB 3.2 Gen2 Type-A port | B12 | DisplayPort 1.4 video output |     |                       |

Default Login Information for DW Spectrum<sup>®</sup> IPVMS

|                        |                             |
|------------------------|-----------------------------|
| Username: <b>admin</b> | Password: <b>admin12345</b> |
|------------------------|-----------------------------|

Default login information for the server's OS

|                         |                             |
|-------------------------|-----------------------------|
| Username: <b>dwuser</b> | Password: <b>Dw5pectrum</b> |
|-------------------------|-----------------------------|

## SPECIFICATIONS

| PART NUMBER             |                               | DW-BJDX31xxT (HW Rev. C)  | DW-BJDX51xxT (HW Rev. C) | DW-BJDX71xxT        |
|-------------------------|-------------------------------|---|--------------------------|---------------------|
| Included IP licenses    |                               | 4   | 4                        | 4                   |
| Form factor             |                               | Slim Desktop  | Slim Desktop             | Slim Desktop        |
| Operating system        | Windows® 10                   | DW-BJDX31XXT  | DW-BJDX51XXT             | DW-BJDX71XXT        |
|                         | Linux Ubuntu®                 | DW-BJDX31XXT-LX   | DW-BJDX51XXT-LX          | ---                 |
|                         | OS on SSD                     | m.2 SSD   | m.2 SSD                  | m.2 SSD             |
| CPU                     |                               | Intel® i3 processor   | Intel® i5 processor      | Intel® i7 processor |
| Memory                  |                               | 8GB   | 16GB                     | 16GB                |
| Ethernet port           |                               | 1x 1G Ethernet, 1x 2.5G Ethernet  |                          |                     |
| System                  | Max video storage rate (Mbps) | 180 Mbps  | 360 Mbps                 | 480 Mbps            |
| Storage                 | Maximum HDD                   | 2 x 3.5 SATA HDD  | 2 x 3.5 SATA HDD         | 2 x 3.5 SATA HDD    |
|                         | Maximum storage               | 20TB  | 20TB                     | 20TB                |
|                         | RAID options                  | ---   | ---                      | ---                 |
|                         | USB interface                 | Yes   | Yes                      | Yes                 |
| Video-out               | Outputs                       | 1x true HD, 1x DP for system configuration. Maximum 1 display output at a time. |                          |                     |
|                         | Video card                    | Onboard Intel HD Graphics   |                          |                     |
|                         | Resolution                    | True HD: 4096x2160@60Hz , DP: 7680x4320@60Hz / 5120x3200@120Hz                  |                          |                     |
| Pre-loaded VMS software |                               | DW Spectrum® IPVMS Server   |                          |                     |
| Remote clients          |                               | Cross-platform - Windows®, Linux Ubuntu® and Mac®                               |                          |                     |
| Mobile apps             |                               | iOS® and Android®   |                          |                     |
| Keyboard and mouse      |                               | Included  |                          |                     |
| Power supply            |                               | 300W**  | 300W**                   | 300W**              |
| Operating temperature   |                               | 41°F-104°F (5°C-40°C)   |                          |                     |
| Operating humidity      |                               | 20-90% RH   |                          |                     |
| Dimension (WxDxH)       |                               | 13.1" x 3.8" x 15.6" (334 x 97 x 402 mm)  |                          |                     |
| Other certification     |                               | FCC, CE, RoHS, NDAA, TAA  |                          |                     |
| Warranty                |                               | 5 year limited  | 5 year limited           | 5 year limited      |

\* UPS recommended

Specifications and components mentioned are subject to change without notice.

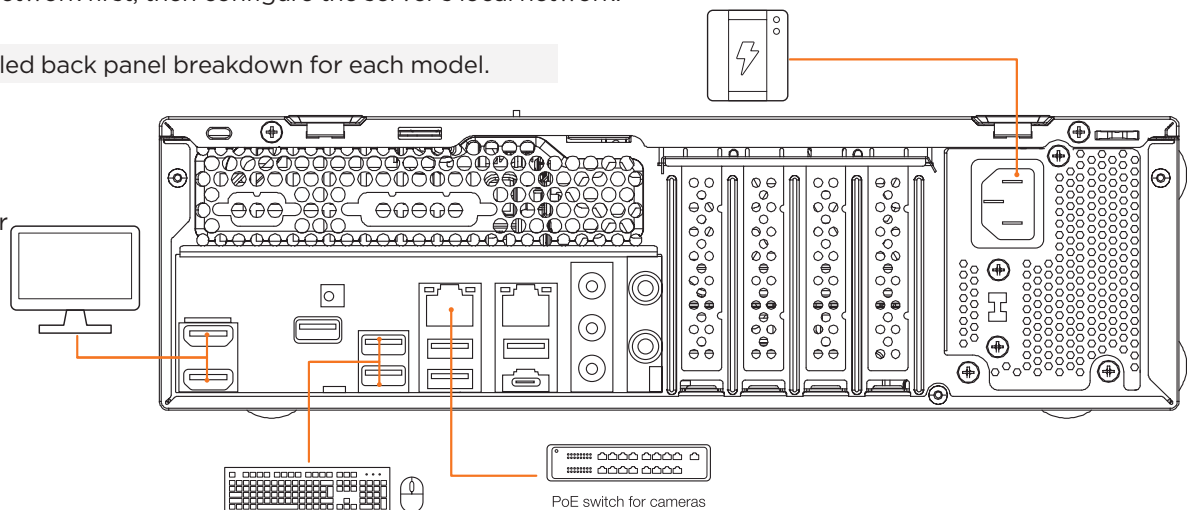
## SETTING UP THE SERVER

### STEP 1: Connect external devices, power and network.

1. Connect a monitor, USB keyboard, USB mouse and network cable to one of the Ethernet ports (B15 on the diagram). Configure the camera's network first, then configure the server's local network.

**NOTE** See page 2 for detailed back panel breakdown for each model.

2. Connect the server to an appropriate power source. A UPS system is recommended. 600VA or higher is recommended (per PSU).
3. Connecting the power cable to a live power source may turn on the server automatically. If the server does not turn on automatically, press the power button on the front of the server (F1 on the diagram).



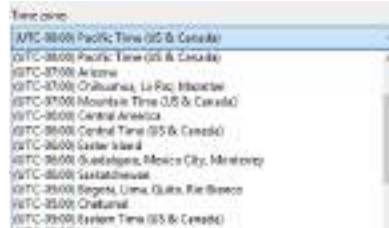
## STEP 2: Configure date and time

### Windows<sup>®</sup>

1. Double-click on the date and time icon on the desktop.

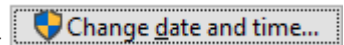


2. Change time zone if it is not correct **Change time zone...** (default is UTC-08:00 Pacific Time).



3. Press OK after selecting the correct time zone.

4. Click "Change date and time..." to update the date and time if they are not correct.



- Verify the time zone before updating the date and time. Time may show 2 or 3 hours off due to an incorrect time zone.



5. Press OK after adjusting to the correct date and/or time. Press OK to close the date and time when done.

## Linux®

1. Open Settings.
2. Click Details.
3. Click Date & Time.



4. Turn OFF Automatic Date & Time and Automatic Time Zone.



5. Click Date & Time and set correct date and time.



6. Click Time Zone and set to correct Time zone. (Type one of the largest cities in the time zone).



7. Close Settings.

## STEP 3: Configure network

Please have the following information ready before starting the network configuration.

|                           | Camera network | Local network (LAN) |
|---------------------------|----------------|---------------------|
| IP address                |                |                     |
| Subnet mask / Netmask     |                |                     |
| Default gateway / Gateway | Not applicable |                     |
| DNS servers               | Not applicable |                     |

\* The camera network and local network cannot be on the same network.

**NOTE** The Blackjack<sup>®</sup> server's network settings are set to DHCP as default.

**NOTE** If you are not sure what information to enter, contact your Network Administrator or Internet Service Provider for the information.

## Windows<sup>®</sup>



1. Double click on the "Network Connections" on the desktop.
2. Right-click on "Ethernet with cable connected" and click "Properties".



3. Select "Internet Protocol Version 4 (TCP/IPv4)" and click "Properties".

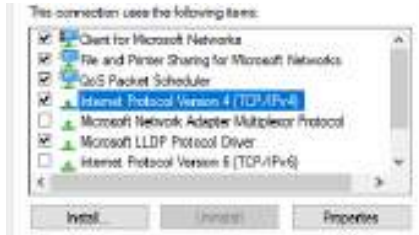


4. Select "Use the following IP address" (Use the following DNS server addresses will be selected automatically).
5. Enter the IP address and Subnet mask of the camera network. (Do not enter anything for the default gateway, preferred DNS server and alternate DNS server).
6. Click OK to close then click close to go back to network connections.



## Local Network

7. Right-click on the other Ethernet, the one with network cable unplugged, and click “Properties”.
8. Select “Internet Protocol Version 4 (TCP/IPv4)” and click “Properties”.



9. Select “Use the following IP address” (Use the following DNS server addresses will be selected automatically).
10. Enter IP address and subnet mask of the camera network.



11. Click OK to close then click close to go back to network connections.
12. Connect a network cable to the Ethernet port B2 (1.5G) and B7 (2.5G) on the diagram (page 2) to the switch on the local network.
13. Close the network connections dialog.



## Linux<sup>®</sup>

1. Open Settings > Network



2. Click Setting of the Realtek Ethernet.



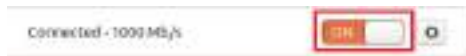
3. Change to Manual then enter Address, Netmask, Gateway.

\* Do not enter Gateway information if there is no Gateway in this network.

4. Click Apply to save.



5. Restart the connection by switching OFF then turn ON. If the connection is off, connect the network cable.

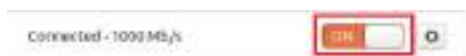


6. Click Settings of the Intel Ethernet.

7. Change the settings if needed to access the Internet and for remote access from a local network.

8. Click Apply to save.

9. Restart the connection by switching OFF then turn ON. If the connection is off, connect the network cable.









**NOTE** If you are not connecting to the Blackjack<sup>®</sup> from the same network, you may be required to perform port forwarding on your router to access the server. Contact your Network Administrator or Installer for additional information

## CONFIGURE CAMERAS USING DW® IP FINDER™

Refer to the camera's QSG to configure any DW® IP camera's IP address using DW® IP finder™.

### DW Spectrum® IPVMS client

|   |  |  |   |
|---|--|--|---|
|  <p>Linux OS</p> | <h4>LINUX-BASED SOFTWARE LAUNCH</h4> <p>OPTION 1: Double-click the DW Spectrum® desktop icon.</p>  <p>OPTION 2: Go to the dashboard on the top left side. Search 'DW'. Click the DW icon.</p>  |  <p>Windows</p> | <h4>WINDOWS-BASED SOFTWARE LAUNCH</h4> <p>OPTION 1: Double-click the DW Spectrum® desktop icon.</p>  <p>OPTION 2: Go to 'Start' on the bottom left and select DW Spectrum® in the Digital Watchdog folder.</p>  |
|---|--|--|---|

## SETTING UP DW SPECTRUM® MEDIA SERVER

Login: **admin**  
Password: **admin12345**

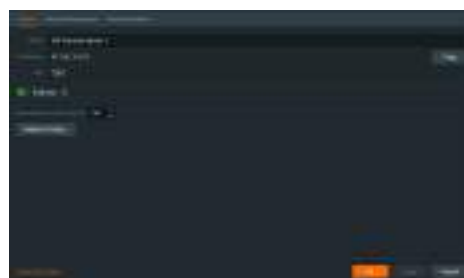
### STEP 1: Initial run from the Blackjack® server

1. Open the DW Spectrum® client by double click on the DW Spectrum® icon.
2. Click on the pre-configured server.
3. If the pre-configured server does not automatically log in, enter the password and click Connect. \*Default password: admin12345 (case sensitive).




### STEP 2: To rename the server

1. Right-click on the server name listed on the resources then click server settings.
2. Go to the general tab and enter the new server name in the name field. Click OK.



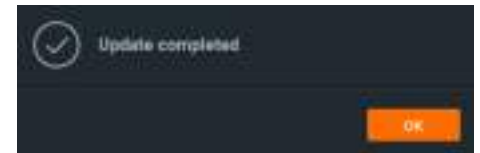
## STEP 3: To check for updates

1. Click on the menu  then click “System Administration”.
2. Go to the updates tab. If the system requires updating, click on the update system button.



\* If you are on the latest version, it will say “You have the latest version installed” and the Update System button will be disabled.

3. Click OK when the update is completed.

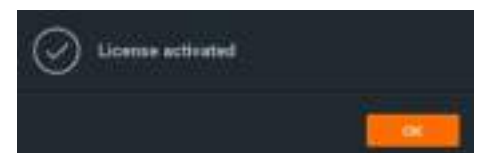
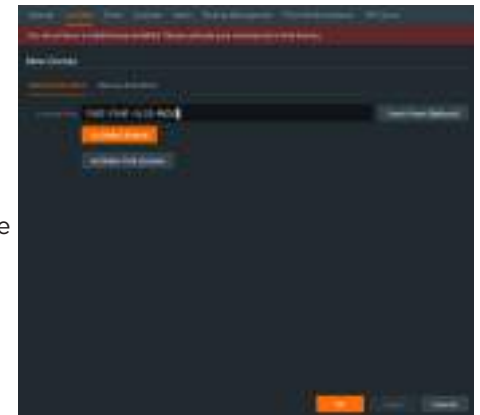


## STEP 4: Enter and activate licenses

1. Go to the system administration window and click on the license tab.
2. Enter the license key and click “Activate License”. An Internet connection is required.

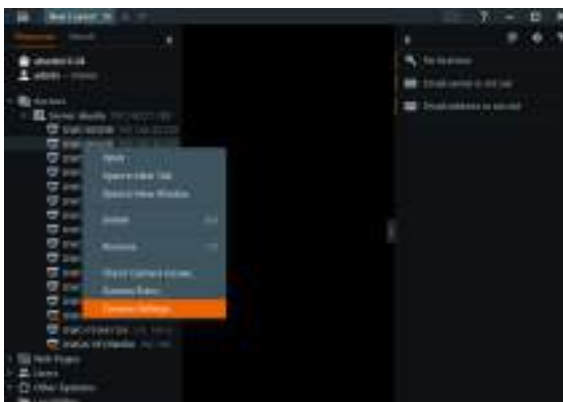
\* Click on “Activate Trial License” if you have not purchased a valid license key.


3. Click OK when the license key is activated.



## STEP 5: Configure recording

1. Right-click on a camera in the resource tree to setup recording. Click on camera settings from the context menu.
2. Go to the recordings tab.



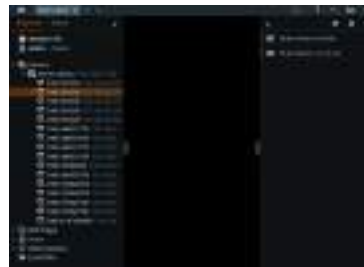
3. Click  to turn on recording.
4. Configure the camera's schedule settings for quality, FPS and recording type.
5. Click and drag the mouse over the recording schedule to apply the settings to multiple days and times.



\* Click "All" to apply the recording settings to the entire schedule.



6. A red dot will appear next to the camera in the resource tree once recording is started.

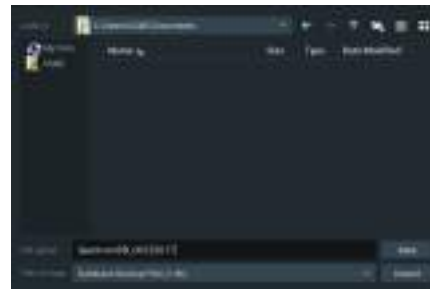


**NOTE:** A Recording License is required to allow each camera to the archive.

## STEP 6: Backup database

1. Go to the system administration window and click on the general tab.
2. Click "Create Backup...".
3. Navigate to the folder you want to save the database and enter a name for the backup file. Click save.

\* It is strongly recommended to create a Database Backup to external storage media before and after every update in the event that a system restore point is needed.



**NOTE:** More information and instructions are available in the DW Spectrum® IPVMS user manual.

**NOTE:** This products is covered by one or more claims of the HEVC Patents listed at [patentlist.accessadvance.com](http://patentlist.accessadvance.com).



# TROUBLESHOOTING TIPS

| Problem                                    | Possible solutions  |
|--|---|
| My camera does not auto-discover           | <ol style="list-style-type: none"> <li>1. Is the camera in the same LAN network as the media server?</li> <li>2. Is your camera compatible with DW Spectrum? (Refer to our website for full list of supported cameras.)</li> <li>3. Is the camera updated to its latest firmware?</li> <li>4. If your camera is integrated with DW Spectrum via ONVIF, make sure ONVIF is enabled on your camera.</li> <li>5. Try adding the camera manually.</li> <li>6. Try rebooting the server after installation. Allow up to 2 minutes for the server to map your network and detect all supported devices.</li> </ol>  |
| Videos are slow                            | <ol style="list-style-type: none"> <li>1. Are you accessing the same cameras from multiple clients? (LAN and WAN)</li> <li>2. Do you have a Gigabit network? Check your network speed.</li> </ol>   |
| My camera appears disconnected             | <ol style="list-style-type: none"> <li>1. Under camera settings, make sure the user name and password are correct.</li> <li>2. Under the camera settings, use the 'Ping' button to make sure the camera is connected to the network properly.</li> <li>3. If you can connect to the camera's web viewer, try rebooting the camera and/or restore it to factory default.</li> <li>4. Make sure your camera is using the latest firmware available.</li> <li>5. Make sure that the camera is connected to the same network as the server.</li> <li>6. If you are connecting to a camera that is integrated with DW Spectrum via the ONVIF protocol (see list), make sure ONVIF is enabled.</li> <li>7. Make sure your user has permissions to view that specific camera.</li> </ol> |
| I cannot get playback video from my camera | <ol style="list-style-type: none"> <li>1. Do you have network connection between client and server (in case server and client are not on the same machine)?</li> <li>2. Make sure your user has playback viewing permissions for the selected channel.</li> <li>3. Make sure the camera is set to a recording mode that would provide recorded video for the selected time and environment.</li> <li>4. On the server side, check the media server log to make sure the camera you are trying to watch has not been unexpectedly disconnected.</li> </ol>   |
| I get 'unauthorized' message on my camera  | <ol style="list-style-type: none"> <li>1. Make sure the camera's user name and password are properly entered in the camera's general information under the camera settings menu.</li> <li>2. If necessary, try rebooting the camera to apply the camera's user name and password.</li> </ol>  |

## DW SPECTRUM SYSTEM REQUIREMENTS

### Recommended specs for the full client

|              | Single-monitor DW Spectrum workstation  | Dual-monitor DW Spectrum workstation                     | Quad-monitor DW Spectrum workstation                    |
|--------------|---|--|---|
| Processor    | Intel i5 8th gen or AMD Ryzen 5 3000 Quad-Core or better  | Intel i7 8th gen or AMD Ryzen 7 3000 Quad-Core or better | Intel i9 or AMD Ryzen 9 Quad-Core or better             |
| Video card   | Intel HD Graphics onboard GPU or better   | Intel HD Graphics onboard GPU or better                  | GeForce GTX 1650 or better                              |
| RAM          | 8 GB DDR3 1600 MHz or better  | 16 GB DDR3 1600 MHz or better                            | 32 GB or better   |
| NIC          | 1Gbps or better   | 2 x 1 Gbit or better                                     | 2 x 1 Gbit or better                                    |
| Storage      | Dedicated SSD or NVME disk for the OS, 128 GB or larger   | Dedicated SSD or NVME disk for the OS, 128 GB or larger  | Dedicated SSD or NVME disk for the OS, 128 GB or larger |
| OS supported | <b>Microsoft Windows OS</b> (supported by both DW Spectrum® Server and Client). <ul style="list-style-type: none"> <li>• Windows 8 - Released: October 2012   EoS: 01/2023</li> <li>• Windows 8.1 - Released: October 2013   EoS: 01/2023</li> <li>• Windows 10 - Released: July 2015</li> <li>• Windows Server 2012 - Released: August 2012   EoS: 10/2023</li> <li>• Windows Server 2012 R2 - Released: October 2013   EoS: 10/2023</li> <li>• Windows Server 2016 - Released: October 2016   EoS: 01/2027</li> <li>• Windows Server 2019 - Released: October 2018   EoS: 01/2029</li> <li>• Windows Server 2022 - Released: August 2021   EoS: 10/2031</li> </ul> **NOTE: DW Spectrum IPVMS for Windows can be installed as a software bundle or the Server and Client software can be installed separately. |  |   |
|              | <b>Ubuntu (Debian-based Linux) OS</b> (supported by both DW Spectrum Server and Client). <ul style="list-style-type: none"> <li>• Ubuntu 16.04 LTS "Xenial Xerus" - Released: April 2016   EoS: 04/2024</li> <li>• Ubuntu 18.04 LTS "Bionic Beaver" - Released: April 2018   EoS: 04/2028</li> <li>• Ubuntu 20.04 LTS: "Focal Fossa" - Released: April 2020   EoS: 04/2030</li> </ul> **NOTE: DW Spectrum IPVMS for Ubuntu is only available for separate installations (not bundled).  |  |   |
|              | <b>Macintosh OS</b> (supported only by the DW Spectrum Client. DW Spectrum Server is not available for macOS). <ul style="list-style-type: none"> <li>• macOS 10.14 "Mojave" - Released: September 2018</li> <li>• macOS 10.15 "Catalina" - Released: October 2019</li> <li>• macOS 11.0, 11.1, 11.2 "Big Sur" - Released: November 2020</li> <li>• macOS 12 "Monterey" - Released: October 2021</li> </ul> **NOTE: DW Spectrum IPVMS for macOS is only supported by the DW Spectrum Client.  |  |   |

\* Except Storage Server version

Important: OS not listed will be not be supported by DW®

Tech Support

Tel: +1 (866) 446-3595

Fax: (813) 888-9262



www.digital-watchdog.com  
sales@digital-watchdog.com

Copyright © Digital Watchdog. All rights reserved. Specifications and pricing are subject to change without notice.