



Network

Dome

# XNV-6120

2M H.265 Dome Camera



## Key Features

- Max. 2Megapixel (1920 x 1080) resolution
- 5.2 ~ 62.4mm (Optical 12X) Optical Lens
- Max. 60fps@all resolutions (H.265 / H.264)
- H.265, H.264, MJPEG Codec Supported, Multiple streaming
- Day & Night (ICR), WDR (150dB), Defog
- IVA, Fog Detection, Sound Classification, Tampering
- Motion Detection, Handover
- SD / SDHC / SDXC 2 Slot (Max. 512GB)
- Hallway View, WiseStreamII Support
- IP67 / IP66, NEMA 4X, IK10

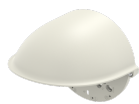
## Compatible Accessories (Optional)



SBP-300HM6



SBP-300CM



SBV-160WC



SBV-158G



SBP-300PM



SBP-300KM



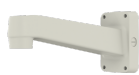
SBP-300WM1



SBP-300LM



SPB-VAN71



SBP-390WM2



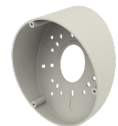
SBP-300WM



SBP-300B



SHD-1600FPW



SBP-160TM

# XNV-6120

2M H.265 Dome Camera



## Specifications

### Video

Imaging Device	1/2.8" CMOS
Resolution	1920x1080, 1280x1024, 1280x960, 1280x720, 1024x768, 800x600, 800x448, 720x576, 720x480, 640x480, 640x360, 320x240
Max. Framerate	H.265/H.264: Max. 60fps/50fps(60Hz/50Hz) MJPEG: Max. 30fps/25fps(60Hz/50Hz)
Min. Illumination	Color: 0.03Lux(F1.6, 1/30sec) BW: 0.003Lux(F1.6, 1/30sec)
Video Out	CVBS: 1.0 Vp-p / 75Ω composite, 720x480(N), 720x576(P) for installation USB: Micro USB Type B, 1280x720 for installation

### Lens

Focal Length (Zoom Ratio)	5.2~62.4mm(12x) zoom
Max. Aperture Ratio	F1.6(Wide)~F3.0(Tele)
Angular Field of View	H: 54.58°(Wide)~5.30°(Tele) V: 32.19°(Wide)~3.00°(Tele) D: 61.4°(Wide)~6.06°(Tele)
Min. Object Distance	2.1m(6.89ft)
Focus Control	Oneshot AF
Lens Type	DC auto iris

### Pan / Tilt / Rotate

Pan / Tilt / Rotate Range	0--354- / 0--75- / 0--355-
---------------------------	----------------------------

### Operational

Camera Title	Displayed up to 85 characters
Day & Night	Auto(ICR)
Backlight Compensation	BLC, HLC, WDR, SSSDR
Wide Dynamic Range	150dB
Digital Noise Reduction	SSNR V
Digital Image Stabilization	Support
Defog	Support
Motion Detection	8ea, 8point Polygonal zones
Privacy Masking	32ea, Quadrangle zones - Color : Gray, Green, Red, Blue, Black, White - Mosaic
Gain Control	Low / Middle / High
White Balance	ATW / AWC / Manual / Indoor / Outdoor
LDC	Support
Electronic Shutter Speed	Minimum / Maximum / Anti flicker (2~1/12,000sec)
Video Rotation	Flip, Mirror, Hallway view(90°/270°)

Design and specifications are subject to change without notice. The latest product information / specification can be found at [HanwhaVision.com](http://HanwhaVision.com).

Hanwha Vision is formerly known as Hanwha Techwin.

Analytics	Analytics events - Defocus detection, Directional detection, Fog detection, Face detection, Motion detection, Digital auto tracking, Appear/Disappear, Enter/Exit, Loitering, Tampering, Virtual line, Audio detection, Sound classification
Alarm I/O	Input 1ea / Output 1ea
Alarm Triggers	Analytics, Network disconnect, Alarm input
Alarm Events	When alarm trigger occurred - File upload(image) : e-mail/FTP - Notification : e-mail - Recording : SD/SDHC/SDXC or NAS recording at event triggers - Alarm output - Handover(PTZ preset)
Audio In	Selectable(mic in/line in) Supply voltage: 2.5VDC(4mA), Input impedance: 2K Ohm
Audio Out	Line out, Max.output level: 1Vrms
<b>Network</b>	
Ethernet	RJ-45(10/100BASE-T)
Video Compression	H.265/H.264: Main/Baseline/High, MJPEG
Audio Compression	G.711 u-law /G.726 Selectable G.726(ADPCM) 8KHz, G.711 8KHz G.726: 16Kbps, 24Kbps, 32Kbps, 40Kbps AAC-LC: 48Kbps at 16KHz
Smart Codec	Manual(5ea area), WiseStream II
Bitrate Control	H.264/H.265: CBR or VBR MJPEG: VBR
Streaming	Unicast(20 users) / Multicast Multiple streaming(Up to 10 profiles)
Protocol	IPv4, IPv6, TCP/IP, UDP/IP, RTP(UDP), RTP(TCP), RTCP, RTSP, NTP, HTTP, HTTPS, SSL/TLS, DHCP, FTP, SMTP, ICMP, IGMP, SNMPv1/v2c/v3(MIB-2), ARP, DNS, DDNS, QoS, PIM-SM, UPnP, Bonjour, LLDP, SRTSP
Security	HTTPS(SSL) Login Authentication Digest Login Authentication IP Address Filtering User access log 802.1X Authentication(EAP-TLS, EAP-LEAP)
Application Programming Interface	ONVIF Profile S/G/T SUNAPI(HTTP API) Wisenet open platform
<b>General</b>	
Webpage Language	English, Korean, Chinese, French, Italian, Spanish, German, Japanese, Russian, Swedish,, Portuguese, Czech, Polish, Turkish, Dutch, Greek, Hungarian
Edge Storage	Micro SD/SDHC/SDXC 2slot 512GB
Memory	1024MB RAM, 256MB Flash
<b>Environmental &amp; Electrical</b>	
Operating Temperature / Humidity	-40°C~+55°C(-40°F ~ +131°F) / Less than 90% RH * Start up should be done at above -35°C
Storage Temperature / Humidity	-50°C ~ +60°C(-58°F ~ +140°F) / Less than 90% RH
Certification	IP66/IP67, IK10, NEMA 4X
Input Voltage	PoE(IEEE802.3af, Class3), 12VDC, 24VAC
Power Consumption	PoE : Max 7.8W 12VDC : Max. 7W 24VAC : Max. 8.2W
<b>Mechanical</b>	
Color / Material	Ivory / Aluminum
Product Dimensions / Weight	Ø160x128.5mm(6.30"x5.06"), 985g(2.17 lb)

Design and specifications are subject to change without notice. The latest product information / specification can be found at [HanwhaVision.com](http://HanwhaVision.com).

Hanwha Vision is formerly known as Hanwha Techwin.

Hanging Mount (Dome)	SBP-300HM6
DORI (EN62676-4 standard)	
Detect (25PPM/ 8PPF)	Wide: 74.4m(572.64ft) / Tele: 829.7m(2,721.97ft)
Observe (63PPM/ 19PPF)	Wide: 29.8m(97.68ft) / Tele: 331.9m(1,088.79ft)
Recognize (125PPM/ 38PPF)	Wide: 14.9m(48.84ft) / Tele: 165.9m(544.39ft)
Identify (250PPM/ 76PPF)	Wide: 7.4m(24.4ft) / Tele: 83.0m(272.2ft)

# XNV-6120

2M H.265 Dome Camera



## CAD

Unit:mm [inch]

\*This parts should not contain any substances which are specified in 4300-00333

NO.	PART NAME	CODE NO.	MATERIAL	QTY	REMARK
1	XNV-6120-1000-2mm-1pc-10100	000000	ABS	1	10000000

Dimensions shown in CAD drawings:

- Top view:  $\phi 118(4.65")$ ,  $128.44(4.99")$ ,  $\phi 60(2.36")$
- Front view:  $128.45(5.06")$ ,  $63.1(2.48")$ ,  $\phi 120(4.72")$

STANDARD TOLERANCE	UNIT	DESIGN	CHECK	APPROVAL	PART NAME
ENVY	mm	N.P.	—	—	XNV-6120-1000-2mm-1pc-10100
ENVY	mm	N.P.	—	—	MODEL NAME
ENVY	mm	N.P.	—	—	CODE NO.
ENVY	mm	N.P.	—	—	000000

SCALE	DESIGN	CHECK	APPROVAL	PART NAME
1/1	N.P.	—	—	XNV-6120-1000-2mm-1pc-10100
1/1	N.P.	—	—	MODEL NAME
1/1	N.P.	—	—	CODE NO.
1/1	N.P.	—	—	000000

CHANGE