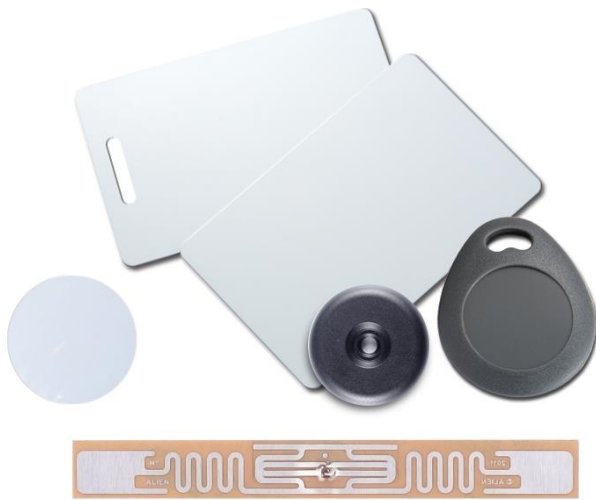


GV-AS ID Card, GV-AS ID Key Fob, GV-UHF Tag, GV-Patrol Fob, GV-Tag Sticker



GeoVision offers a wide range of access cards, key fobs, stickers, and tags to satisfy your needs. **GV-AS ID Card** is suitable for use in commercial environments where identification and access control are critical for security. **GV-AS ID Key Fob** and **GV-Tag Sticker** are perfect for home applications since they are intended for simple carrying and key replacement. **GV-UHF Tag** is ideal for managing parking lots. **GV-Patrol Fob** is excellent for patrol stations with high mobility that may be quickly deployed.

KEY FEATURES

- 125 KHz Card and Key Fob
- 13.56 MHz ISO 14443A Card, Key Fob, Patrol Fob and Sticker
- 900 MHz ISO 18000-6C UHF RFID Tag
- 13.56 MHz Mifare DesFire Card

Model Name	Frequency	Compatible Devices
GV-AS ID Card / GV-AS ID Key Fob	125 KHz	GV-Reader: GV-DES1352 / GV-SR1251 / GV-QR1352 GV-Enrollment Reader: GV-PCR1251
GV-AS ID Card / GV-AS ID Key Fob	13.56 MHz	GV-AS Controller: GV-AS1010 / GV-CS1320
GV-AS ID F Card / GV-AS ID F Key Fob		GV-Reader: GV-CR1320 / GV-DES1352 / GV-DFR1352 / GV-FR2020 / GV-R1352 / GV-RK1352 / GV-QR1352 / GV-RKD1352 / GV-R1355 / GV-RKR1355 / GV-RKV1355 / GV-R1354
GV-Patrol Fob		GV-FR Panel: GV-FR Panel GV-GF Fingerprint Reader (Card Only Mode): GV-GF1922 GV-Enrollment Reader: GV-PCR1352
GV-Tag Sticker		
GV-UHF Tag	900 MHz	GV-AS Controller: GV-AS1520 GV-UHF Reader: GV-RU9003

Note: The hole option of the GV-AS ID Card is only available for 13.56 MHz ISO 1444-3A.

Model Name	Dimensions	Operating Temperature
GV-AS ID Card & GV-AS ID F Card	85.5 x 54 mm (3.4" x 2.1")	-20 ~ 70°C (-4 ~ 158°F)
GV-AS ID Key Fob & GV-AS ID F Key Fob	30.5 x 37.5 mm (1.2" x 1.5")	-20 ~ 55°C (-4 ~ 131°F)
GV-Patrol Fob	34 x 6 mm (1.3" x 0.2")	-45 ~ 85°C (-49 ~ 185°F)
GV-UHF Tag	97 x 12 mm (3.8" x 0.5")	-20 ~ 85°C (-4 ~ 185°F)
GV-Tag Sticker	∅ 25 mm (∅ 0.98")	0 ~ 50°C (32 ~ 122°F)