



ACTi
Connecting Vision

Quick Installation Guide

16-Channel Rackmount Standalone NVR

ENR-190

BEFORE YOU START

Thank you for purchasing ACTi ENR Standalone Network Video Recorder. This guide contains all the information you need to quickly set up ACTi ENR server system via local interface.

For detailed instructions on installation, operation and how to log in to ENR as a web client, please refer to the product manuals provided on ACTi corporate website.

The items below are prerequisite for installation:

- Network cameras
- RJ-45 network cables
- Network switch
- Monitor (1080p, HDMI input) with HDMI cable
- USB mouse
- At least one ACTi-certified 3.5-inch SATA hard disk.

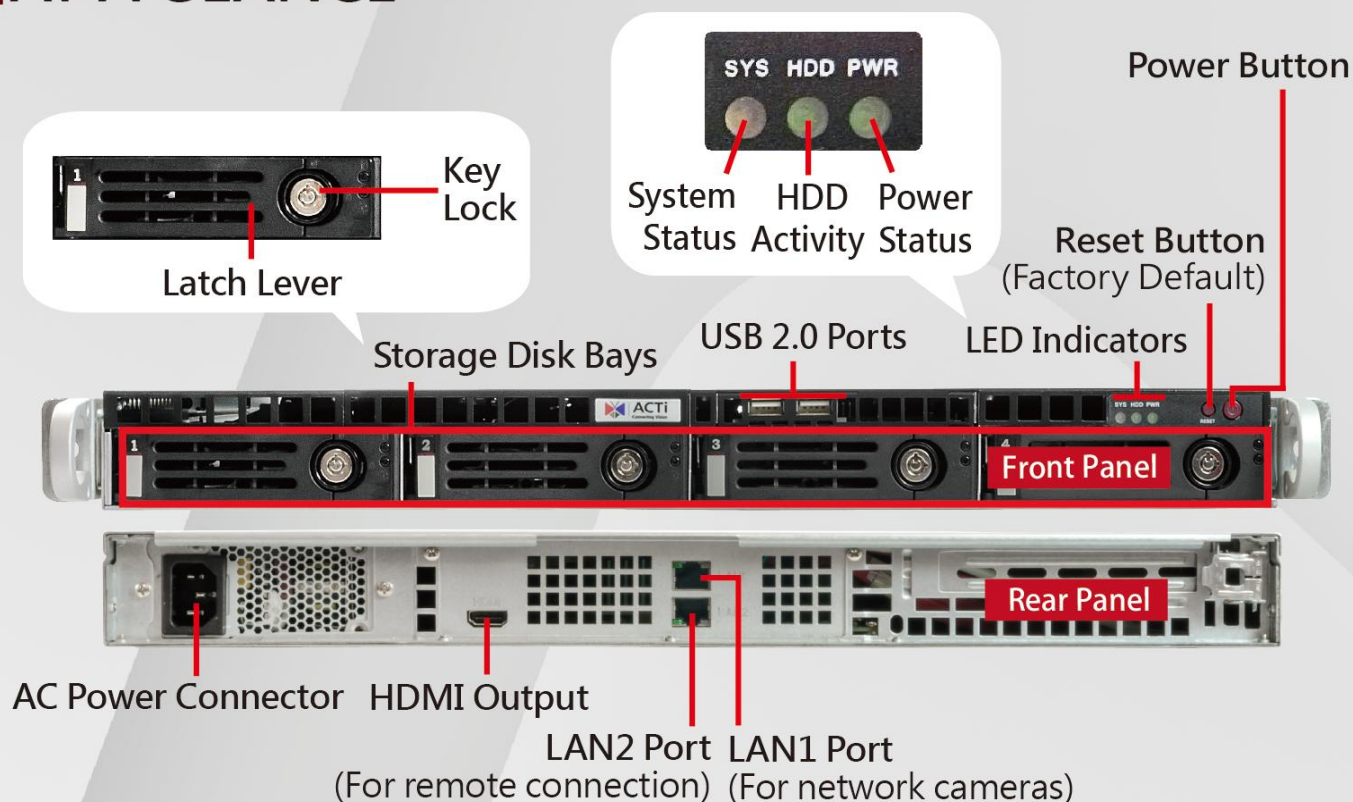
You may find the certified disk models at <http://www.acti.com/hddselector>

01 UNPACK

The package includes the following items:

- ENR x 1
- Power cord x 1
- Adapter converter x 1
- Dust cover x 1
- USB mouse x 1
- Warranty card x 1
- Quick installation guide x 1
- HDD tray keys
- Hard disk screw pack x 1

02 AT A GLANCE



03 RACKMOUNT THE UNIT

This unit is designed to be mounted on a standard server rack, which occupies 1U (1.75") of vertical space.

1. Allow a minimum of 5 cm clearance at the front and the rear for front-to-back airflow of the unit.
2. Prepare a rack shelf or a rail kit rated for the unit's weight, and install that to support the entire unit. Make sure the accessories you purchase fit the mounting bracket pre-installed on this unit.
3. Secure the unit to rack posts by its chassis ears using suitable screws.



04 HARD DISK INSTALLATION

Insert the hard disks into the disk bays following the sequence of tray numbers.

Remove the Tray

Step 1

Slide the Key Lock aside, the Latch Lever will pop out by itself.



Step 2

Hold the Latch Lever to pull out the tray.



Mount the Disk

Step 3

Loosen the two screws on the tray to remove the dummy disk.



Step 4

Secure the hard disk on the tray with the provided disk screws.



Install the Tray

Step 5

Press on Key Lock, push the tray into the bay until it stops.



Step 6

Press on the Latch Lever until it clicks into place.



Reminder

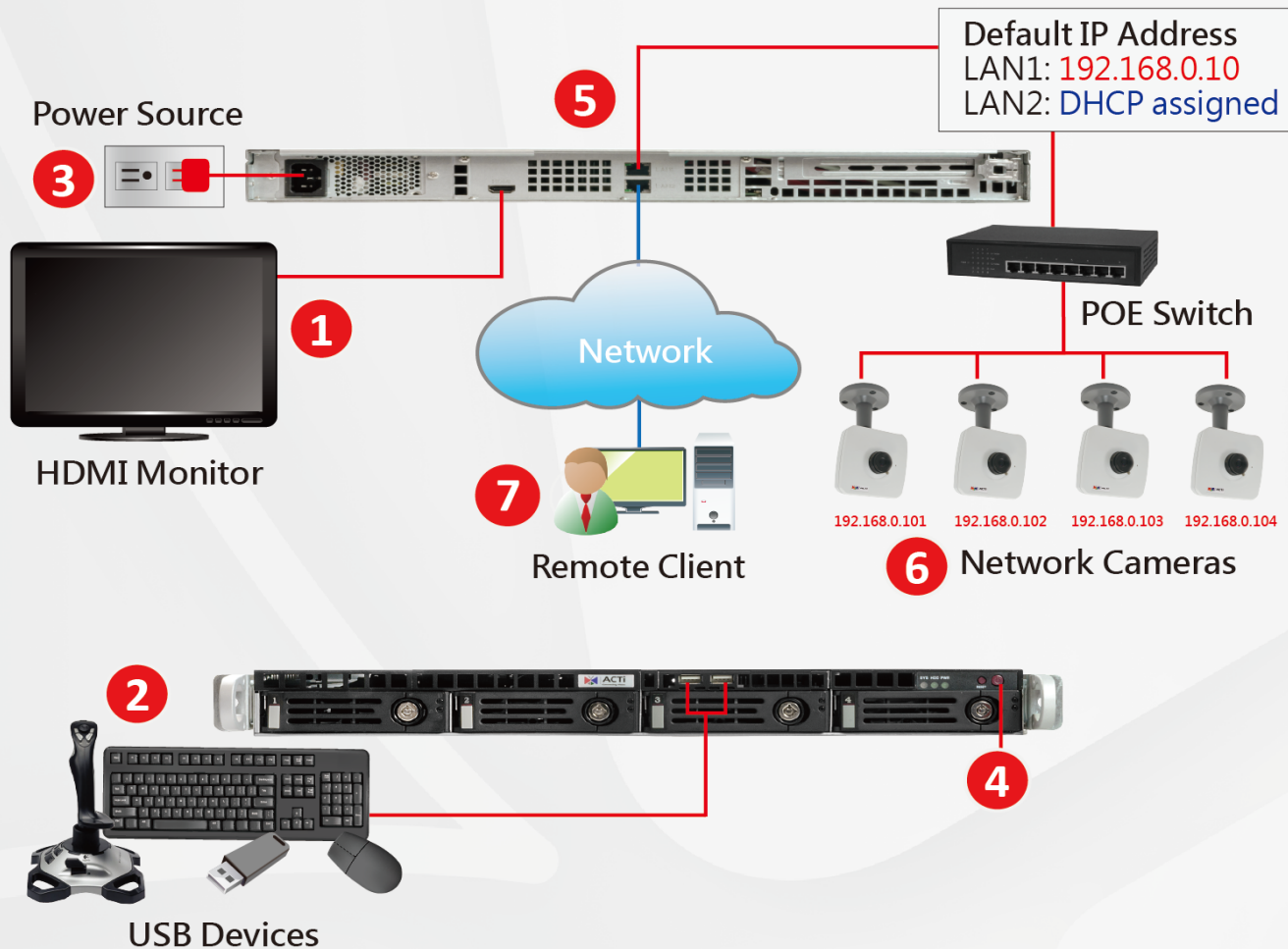
After you finish configuring ENR system, remember to lock the disk trays using provided keys and attach the dust cover to the unit's front panel.



Align the left end hooks of the cover to the holes on the left handle. Press the latch and push the right end towards the right handle until it clicks into place.

05 CONNECTIONS

The diagram below demonstrates a connection setting example using LAN1 to connect network cameras within local network and LAN2 for another network.



Follow the procedures to connect the devices. These devices are supposed to be connected in the sequence shown below:

1. Connect the HDMI monitor.
2. Connect the USB devices.
3. Plug the power adapter into ENR and the electricity outlet.
4. Press down **Power Button**, and the power status LED will turn solid green.
5. Attach the network cables to **LAN1** port.
6. Connect the network cameras to the switch. ENR will automatically assign IP addresses to these cameras via **LAN1** port.
7. Attach the network cables to **LAN2** port (optional, required for remote client connection from another network).

06 LOGIN



ENR190

Account

Password

Language

Remember me

Auto login

On Login window, input **Account** and **Password** with virtual keypad, and then click “Login”.

- Account : **admin**
- Password : **123456**



07 FORMAT DISKS



Welcome to the HDD Setup Wizard

Storage Device

- SATA-1 WD6400AAKS-22A7B2
- SATA-2 WD6400AAKS-22A7B2

Storage Information

Capacity:	596.17 GB
Used:	0.00 GB
Free:	596.17 GB
Recording:	NO
File System:	unknown
Recordable:	NO
S.M.A.R.T.:	detecting

On HDD Setup Wizard window, select the unformatted disk and click “**Format**”. Repeat this step to format other disks, and then click “**OK**”.

08 ADD CAMERAS



Welcome to Camera Setup Wizard

Auto Add
Search and Add Cameras Automatically (ACTi+H.264)

Account/Password for accessing camera(s)

Account

Password

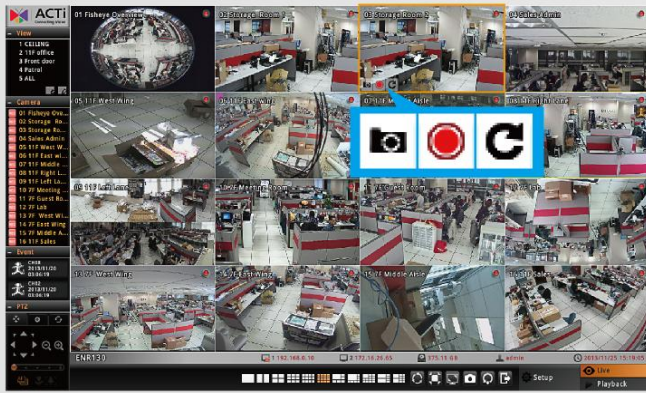
On Camera Setup Wizard window, click “**Auto Add**”, input the **Account** and **Password** to access the cameras, and they will be added to the system.

Technical Support


If you have any question during system installation, please feel free to contact our engineers via:

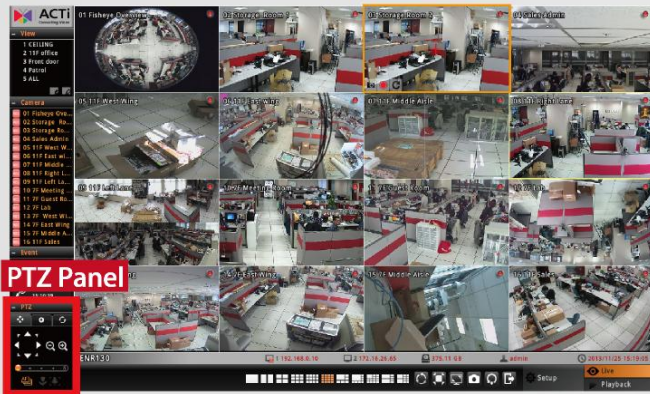
- Customer Help Desk platform: <http://www.acti.com/CHD>
- US/Canada toll-free number: 1-866-410-2284 (ACTi)

09 CHECK LIVE VIEW

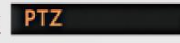


After the cameras are added, you will immediately see live streams on Live View screen.

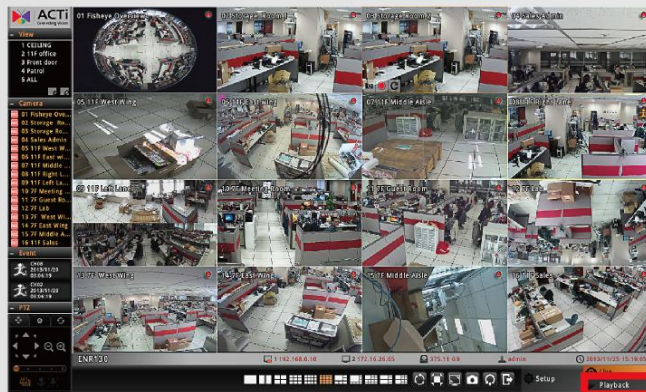
- To take a snapshot, select the channel and then click 
- To view a single channel in 1x1 layout, double-click on the channel.

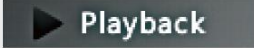


To validate PTZ operations:


- (1) Select a PTZ camera channel.
- (2) Click  in the bottom left corner to open PTZ panel, and use the on-screen buttons to manipulate the camera.

10 CHECK RECORDINGS



On Live View screen, click  in the bottom right corner to enter Playback screen.



On the time bar, drag the current-time indicator to your desired position, and click  on Playback control panel to play.

To export video, select the channel and then click 