

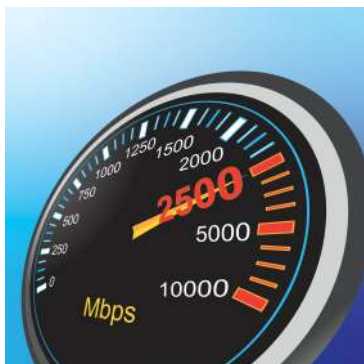


8-Port 2.5G Switch

TEG-S381 (v1.xR)

- 8 x 2.5G RJ45 ports
- Compatible with existing Cat5e or better cabling
- 40Gps switching capacity
- Backwards compatible with 100/1000Mbps devices
- Fanless design eliminates noise
- Wall mountable for installation flexibility
- IEEE 802.3bz (2.5G) compliant
- Lifetime Warranty
- NDAA / TAA compliant (U.S. and Canada only)

Expand your network's bandwidth and reduce bottlenecks with TRENDnet's 8-Port 2.5G Switch, model TEG-S381. The 2.5G network switch comes equipped with 2.5GBASE-T RJ45 ports that provide ultra-fast speeds capable of up to 2.5Gbps over your existing Cat5e or better cabling. This high-speed 2.5G switch features a durable metal enclosure and can be wall mounted for setup flexibility. The fanless design lowers energy consumption and eliminates operating noise. TRENDnet's reliable 2.5G switch is a cost-effective solution to increase your network's throughput.



2.5G Ports

Equipped with eight 2.5GBASE-T RJ45 ports that provide ultra-fast speeds capable of up to 2.5Gbps over existing Cat5e or better cabling.



Wall Mountable

The 2.5G switch features a durable metal housing with a convenient wall mountable design for greater installation flexibility.



Fanless

The fanless design of the 2.5G switch lowers energy consumption costs and eliminates operating noise.

FEATURES



Easy Installation

No configuration needed, simply connect network devices to the 2.5G Ethernet switch



2.5G Ports

Equipped with eight 2.5GBASE-T RJ45 ports that provide ultra-fast speeds capable of up to 2.5Gbps over existing Cat5e or better cabling



Switching Capacity

40Gbps switching capacity



Fanless

Fanless design lowers energy consumption and eliminates operating noise



Housing Design

Sturdy metal housing



Wall Mountable

Features a convenient wall mountable design for greater installation flexibility



Jumbo Frame

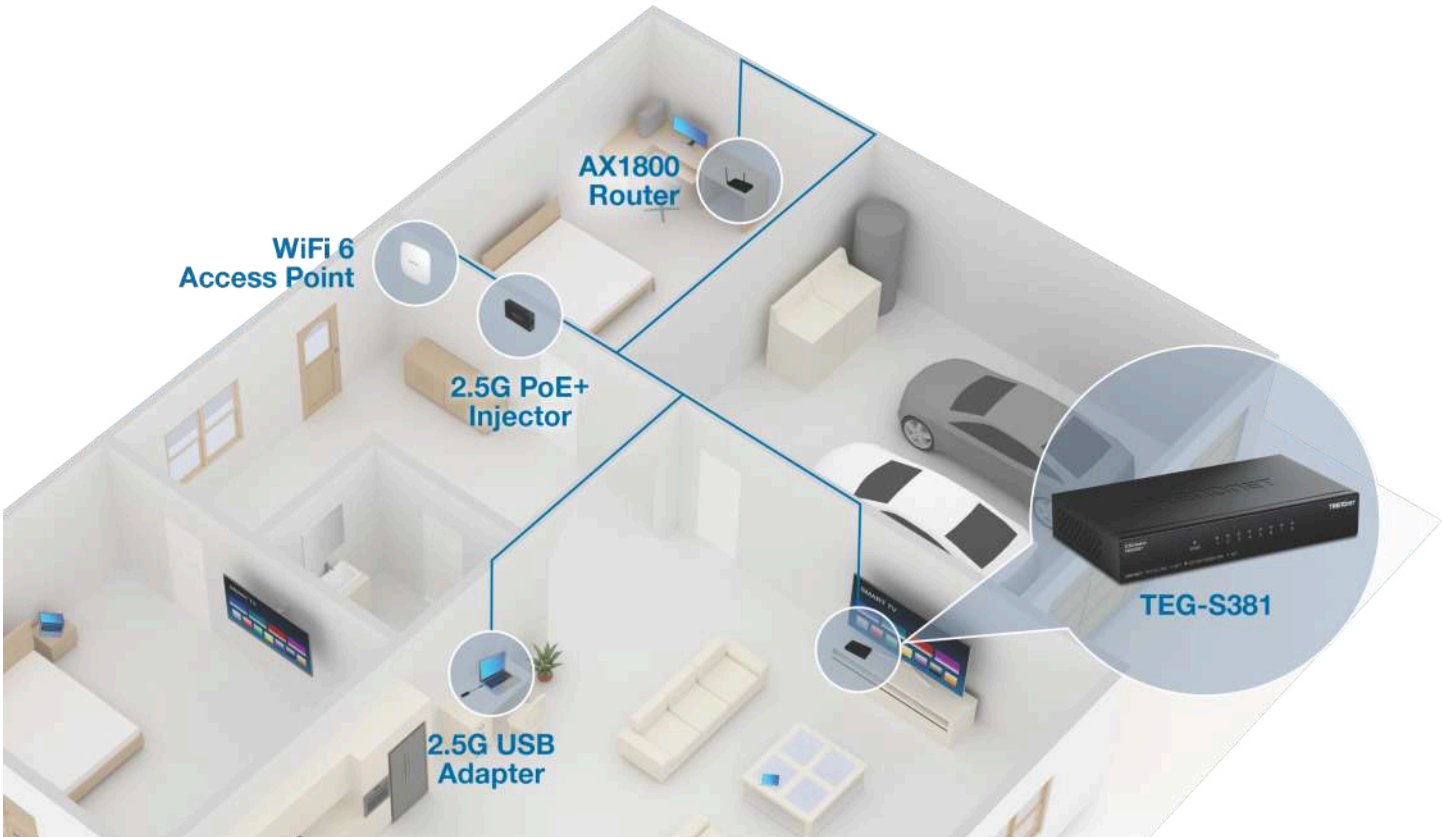
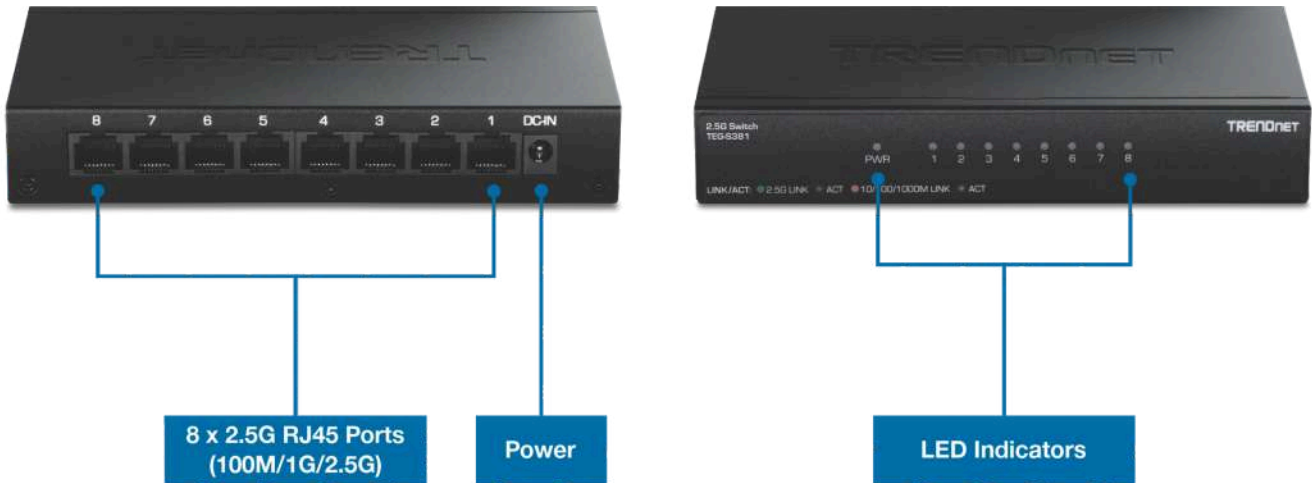
Sends larger packets, or Jumbo Frames (up to 10KB), for increased performance



LED Indicators

LED indicators on this 2.5G switch convey port status

NETWORKING SOLUTION



SPECIFICATIONS

Standards

- IEEE 802.3u
- IEEE 802.3ab
- IEEE 802.3bz
- IEEE 802.3az
- IEEE 802.3x

Device Interface

- 8 x 2.5G RJ45 ports (100M/1G/2.5G)
- LED indicators

Performance

- Switching Capacity: 40Gbps
- RAM Buffer: 1MB
- MAC Address Table: 16K entries
- Jumbo Frames: 10KB
- Forwarding Rate: 29.76Mpps (64-byte packet size)

Power

- Input: 90 – 264V AC, 47/63 Hz, 0.5A
- Output: 12V DC, 1A external power adapter
- Max. consumption: 6.85W

Fan/Acoustics

- Fanless design

MTBF

- 904,717 hours @ 25° C

Operating Temperature

- 0° – 40° C (32° – 104° F)

Operating Humidity

- Max. 90% non-condensing

Dimensions (L x W x H)

- 155 x 85 x 26mm (6 x 3.3 x 1 in.)

Weight

- 332g (11.7 oz.)

Certifications

- FCC
- CE
- LVD

Warranty

- Lifetime Warranty

Package Contents

- TEG-S381
- Power adapter (12V DC, 1A)

All references to speed are for comparison purposes only. Product specifications, size, and shape are subject to change without notice, and actual product appearance may differ from that depicted herein.

TRENDnet offers a lifetime warranty for all of its metal-enclosed network switches that have been purchased in the United States/Canada on or after 1/1/2015. Cooling fan and internal power supply carry a one-year warranty.