

# EX0808-OSDP

## 8-relay I/O Expansion Board

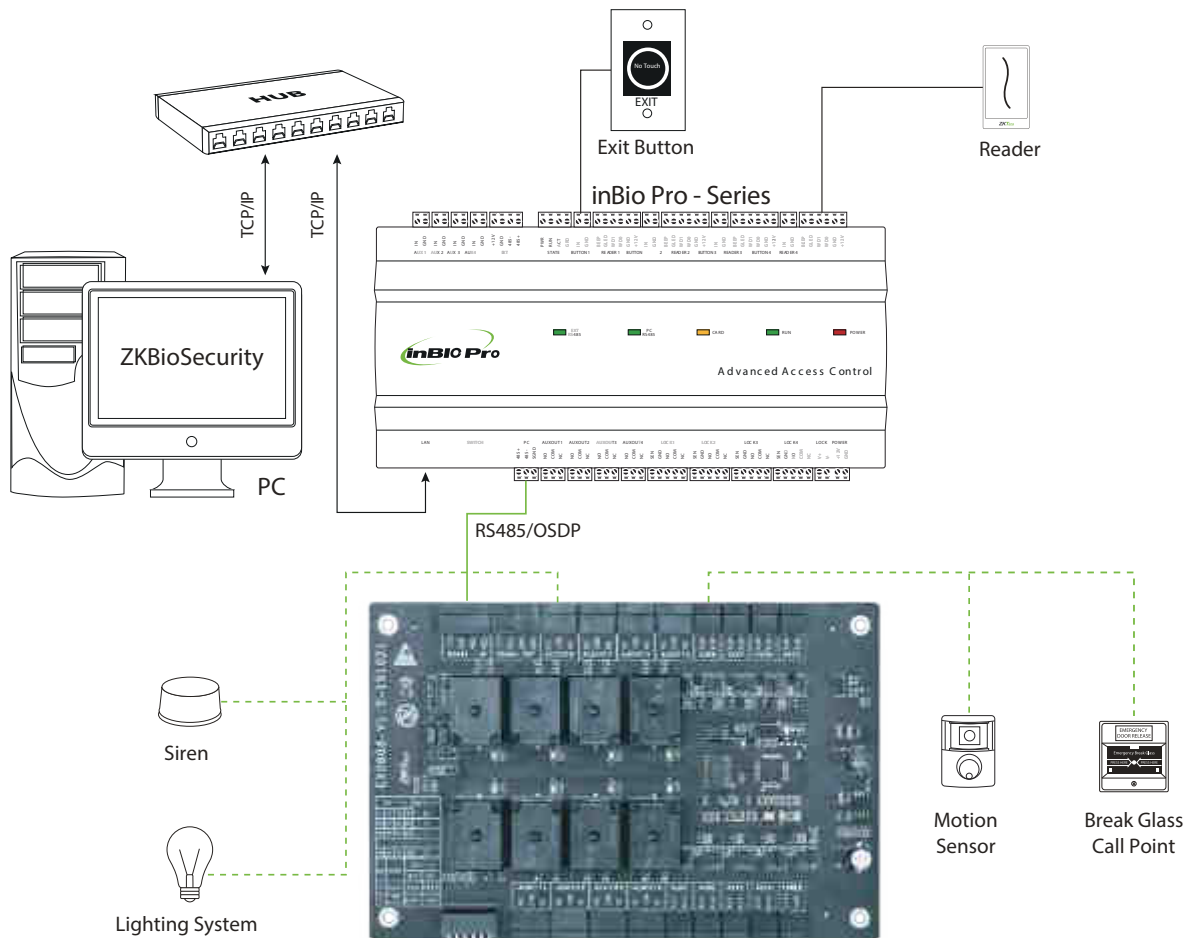
**EX0808-OSDP** is an I/O board which supports OSDP communication protocol. By having 8 AUX inputs and 8 AUX outputs on a single board, EX0808-OSDP lowers implementation costs by eliminating the need for multiple I/O devices.

EX0808-OSDP is designed exclusively for ZKTeco InBio Pro access control panels. Each InBio Pro panel can support up to 8 (eight) EX0808-OSDP boards (maximum 64 AUX inputs and 64 AUX outputs).

## SPECIFICATIONS:

<b>Aux Inputs:</b>	8
<b>Aux Output Relays:</b>	8
<b>Communication:</b>	RS485 and OSDP (version 2.1.7)
<b>Baud Rate:</b>	RS485/ OSDP: 9600 bps
<b>Address:</b>	Set by DIP switch
<b>Dimension (L x W):</b>	6.29 x 4.17 in (160mm x 106mm)
<b>Net Weight:</b>	0.44 lbs (0.2kg)
<b>Support:</b>	Up to 8 boards per 1 InBio Pro panel
<b>Power Consumption:</b>	3.6W @ 12V DC 300mA
<b>Power Supply:</b>	12V DC 300mA
<b>Operating Temperature:</b>	32°F - 113°F (0°C - 45°C)
<b>Operating Humidity:</b>	20% to 80%
<b>Output Relay:</b>	3 Form-C relays

# WIRING DIAGRAM



## ZKTeco USA

1600 Union Hill Rd. Alpharetta GA 30005

Phone: (862) 505 - 2101 • sales@zktecousa.com • www.zktecousa.com

© Copyright 2020. ZKTeco Logo and ZKTeco USA Logo are registered trademarks of ZKTeco or related company. All other product and company names mentioned are used for identification purposes only and may be the trademarks of their respective owners. All specifications are subject to change without notice. All rights reserved.