

Cube with Bundled Removable Bracket

Mounting on a Dropped Ceiling using the Bundled Bracket

Installation Guide

For Models:

D1x, E1x, TCM-4xxx

2013/12/06



Table of Contents

- Installation Procedures 3**
 - Step 1: Mount the Camera 3
 - Step 2: Install the Camera 4
 - Step 3: Connect the Camera 6
 - Step 4: Access the Camera Live View 7
 - Step 5: Adjust the Viewing Angle and Focus 7

- Appendix 8**
 - How to Access the Camera Live View 8

- Safety Information 16**

Installation Procedures

This Installation Guide describes the procedures in installing the camera on a flat surface using the bundled bracket.

Step 1: Mount the Camera

The bracket can be mounted on a concrete or wooden surface. Select the location where you want to mount the bracket.

1. Mark the location of the three (3) screw holes on the surface. Depending on the surface material, it may be necessary to drill the holes and insert the plastic plugs.
2. Using a Phillips screwdriver, attach the three supplied screws to secure the bracket to the ceiling.



Step 2: Install the Camera

1. Screw the camera to the bracket.



2. Position the camera to face the target view area.



3. Tighten the knob to fix the camera position.



Step 3: Connect the Camera

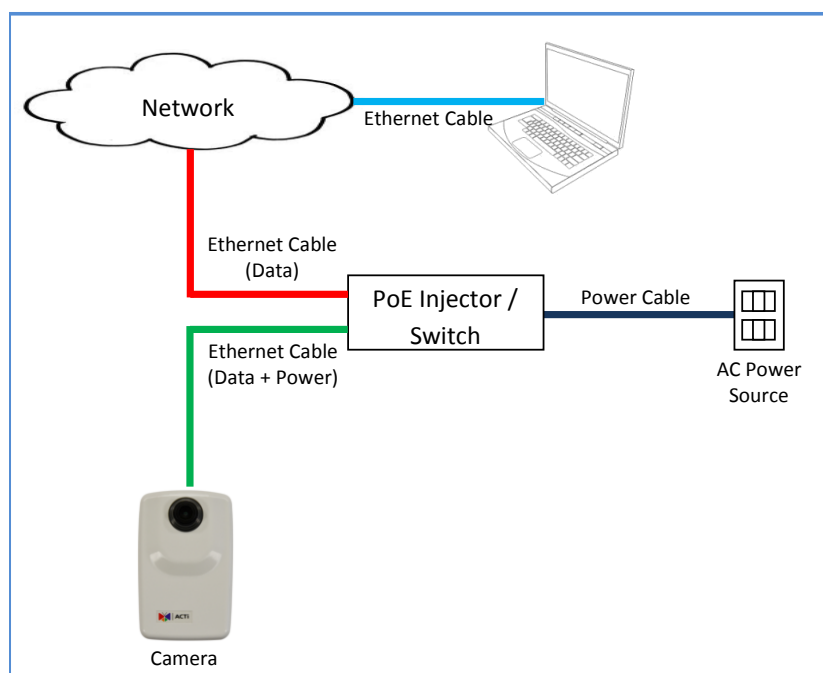
To connect the camera, you need to prepare the following:

- Power over Ethernet (PoE) supported injector or switch
- Ethernet cables

1. Connect an Ethernet cable to the Ethernet port of the camera. Then route the cable to go along the ceiling.



2. Connect the other end of the Ethernet cable to the PoE injector / switch.
3. Connect the PoE injector / switch and a PC to the same network. Sample network illustration below.



Step 4: Access the Camera Live View

See [How to Access the Camera Live View](#) on page 8.

Step 5: Adjust the Viewing Angle and Focus

Based on the camera Live View display, move the lens knob to adjust the camera focus.



Appendix

How to Access the Camera Live View

Configure the IP Addresses

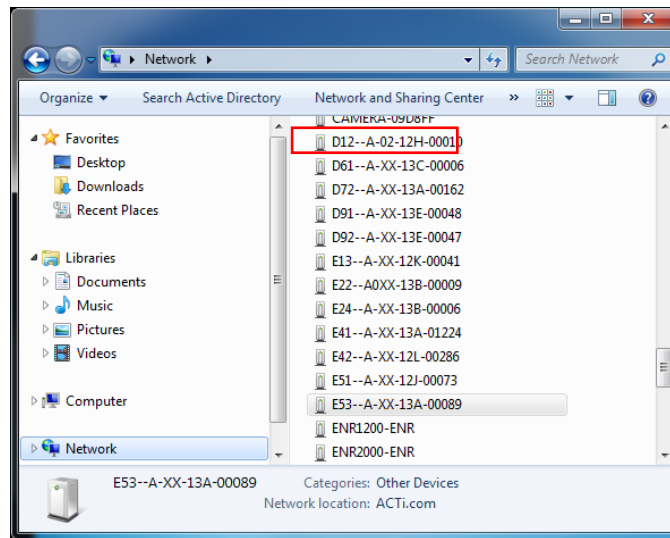
In order to be able to communicate with the camera from your PC, both the camera and the PC have to be within the same network segment. In most cases, it means that they both should have very similar IP addresses, where only the last number of the IP address is different from each other. There are 2 different approaches to IP Address management in Local Area Networks – by DHCP Server or Manually.

Using DHCP Server to Assign IP Addresses

If you have connected the computer and the camera into the network that has a DHCP server running, then you do not need to configure the IP addresses at all – both the camera and the PC would request a unique IP address from DHCP server automatically. In such case, the camera will immediately be ready for the access from the PC. The user, however, might not know the IP address of the camera yet. It is necessary to know the IP address of the camera in order to be able to access it by using a Web browser.

The quickest way to discover the cameras in the network is to use the simplest network search, built in the Windows system – just by pressing the “Network” icon, all the cameras of the local area network will be discovered by Windows thanks to the UPnP function support of our cameras.

In the example below, we successfully found the camera that we had just connected to the network.

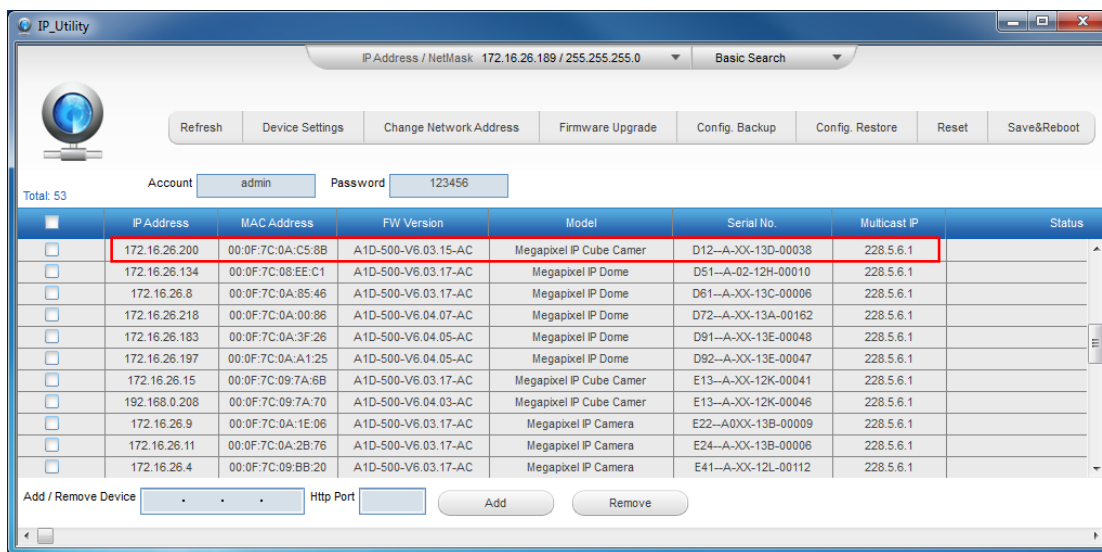


By double-clicking the mouse button on the camera model, it is possible to automatically launch the default browser of the PC with the IP address of the target camera filled in the address bar of the browser already.

If you work with our cameras regularly, then **there is even a better way to discover the cameras in the network** – by using **IP Utility**. The IP Utility is a light software tool that can not only discover the cameras, but also list lots of valuable information, such as IP and MAC addresses, serial numbers, firmware versions, etc, and allows quick configuration of multiple devices at the same time.

The IP Utility can be downloaded for free from http://www.acti.com/IP_Utility

With just one click, you can launch the IP Utility and there will be an instant report as follows:



You can quickly see the camera model in the list. Click on the IP address to automatically launch the default browser of the PC with the IP address of the target camera filled in the address bar of the browser already.

Using the Default Camera IP Address

If there is no DHCP server in the given network, the user may have to assign the IP addresses to both PC and camera manually to make sure they are in the same network segment.

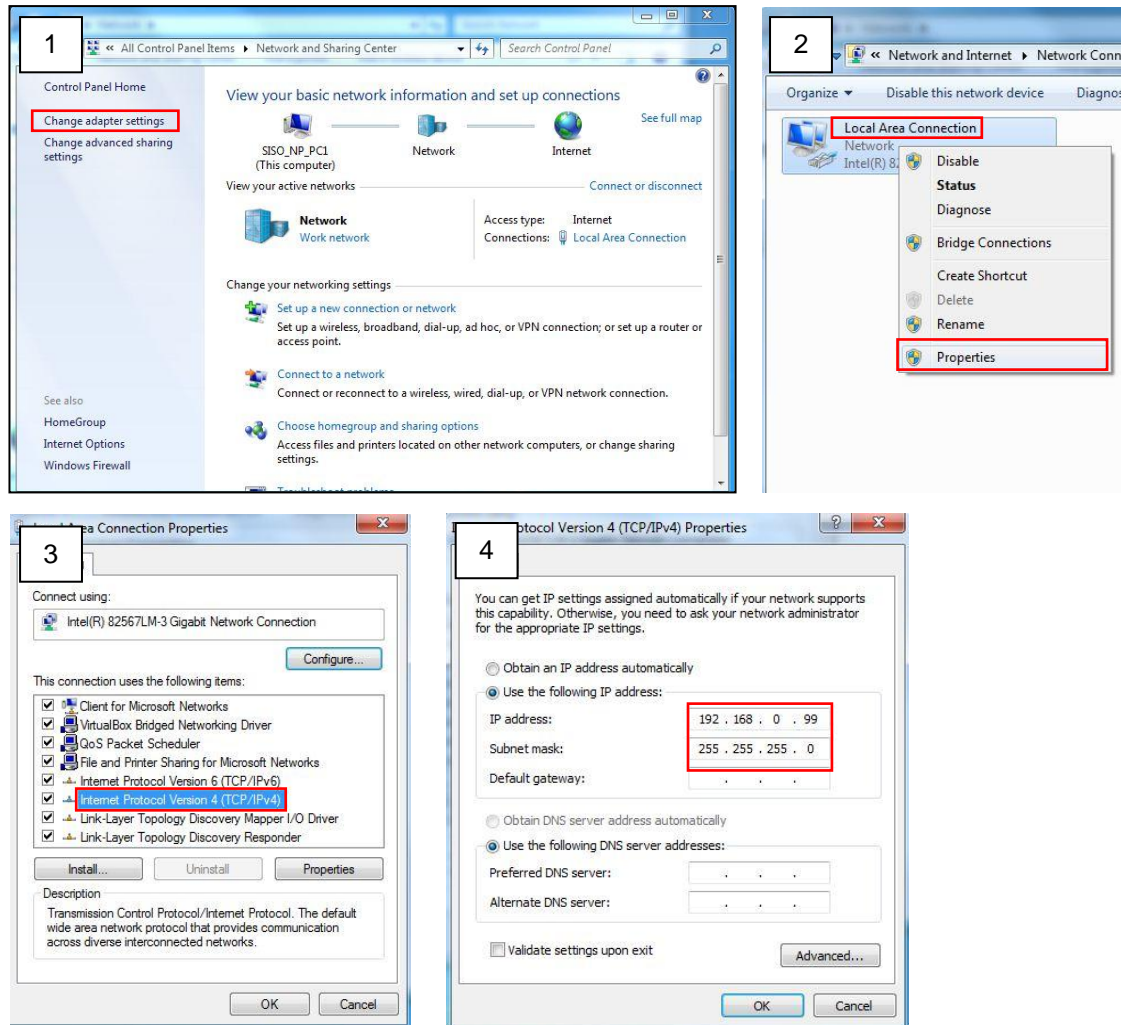
When the camera is plugged into network and it does not detect any DHCP services, it will automatically assign itself a default IP:

192.168.0.100

Whereas the default port number would be **80**. In order to access that camera, the IP address of the PC has to be configured to match the network segment of the camera.

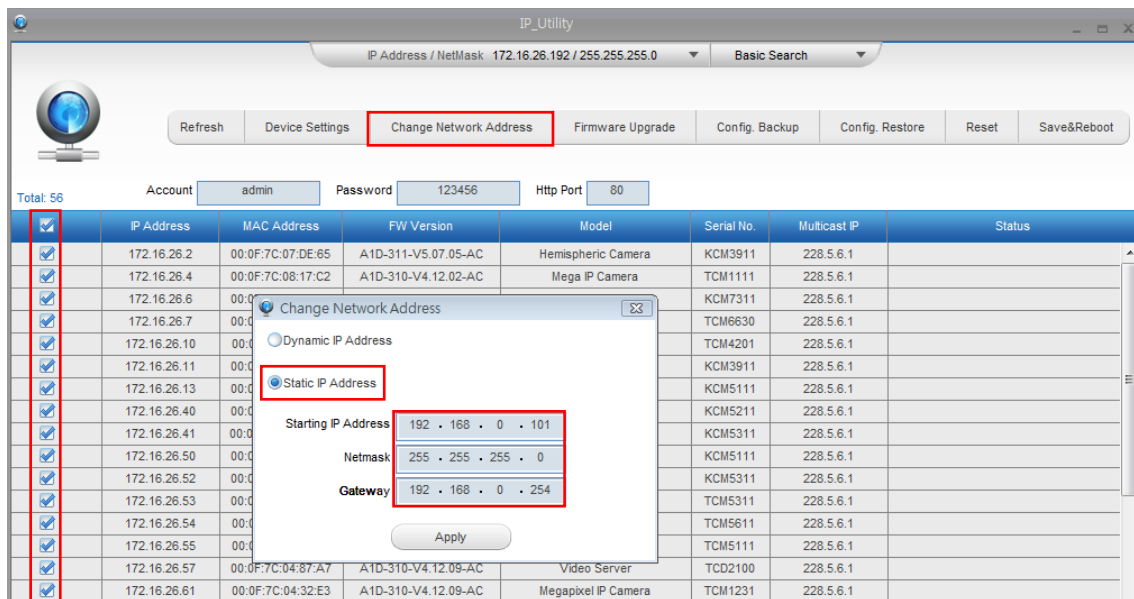
Manually adjust the IP address of the PC:

In the following example, based on Windows 7, we will configure the IP address to **192.168.0.99** and set Subnet Mask to **255.255.255.0** by using the steps below:



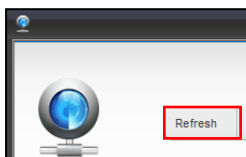
Manually adjust the IP addresses of multiple cameras:

If there are more than 1 camera to be used in the same local area network and there is no DHCP server to assign unique IP addresses to each of them, all of the cameras would then have the initial IP address of **192.168.0.100**, which is not a proper situation for network devices – all the IP addresses have to be different from each other. The easiest way to assign cameras the IP addresses is by using **IP Utility**:



With the procedure shown above, all the cameras will have unique IP addresses, starting from 192.168.0.101. In MAC there are 20 cameras selected, the last one of the cameras would have the IP 192.168.0.120.

Later, by pressing the “Refresh” button of the IP Utility, you will be able to see the list of cameras with their new IP addresses.



Please note that it is also possible to change the IP addresses manually by using the Web browser. In such case, please plug in only one camera at a time, and change its IP address by using the Web browser before plugging in the next one. This way, the Web browser will not be confused about two devices having the same IP address at the same time.

Access the Camera

Now that the camera and the PC are both having their unique IP addresses and are under the same network segment, it is possible to use the Web browser of the PC to access the camera.

You can use **any of the browsers** to access the camera, however, the full functionality is provided only for **Microsoft Internet Explorer**.

The browser functionality comparison:

| Functionality | Internet Explorer | Other browsers |
|--|-------------------|----------------|
| Live Video | Yes | Yes* |
| Live Video Area Resizable | Yes | No |
| PTZ Control | Yes | Yes |
| Capture the snapshot | Yes | Yes |
| Video overlay based configuration (Motion Detection regions, Privacy Mask regions) | Yes | No |
| All the other configurations | Yes | Yes |

* When using non-Internet Explorer browsers, free third-party software plug-ins must be installed to the PC first to be able to get the live video feed from the camera. Check the firmware version of the camera to determine which plug-in is necessary:

| Firmware Version | Required Plug-In |
|------------------------------|---|
| A1D-500-V6.04.xx-AC or older | Basic VLC Media Player (http://www.videolan.org) |
| A1D-500-V6.05.xx-AC or newer | QuickTime (http://www.apple.com/quicktime/download/) |

The camera firmware version can be found on the **FW Version** column of the IP utility or access the **Setup** page of the Web Configurator (see page 15).

***Disclaimer Notice:** The camera manufacturer does not guarantee the compatibility of its cameras with VLC player or QuickTime – since these are third party softwares. The third parties have the right to modify their utility any time which might affect the compatibility. In such cases, please use Internet Explorer browser instead.*

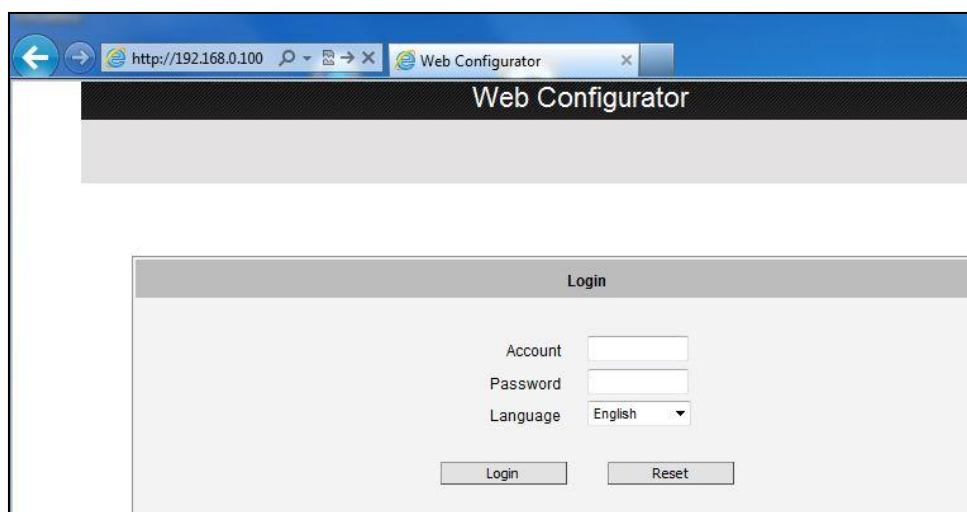
When using Internet Explorer browser, the ActiveX control for video stream management will be downloaded from the camera directly – the user just has to accept the use of such control when prompted so. No other third party utilities are required to be installed in such case.

The following examples in this manual are based on Internet Explorer browser in order to cover all functions of the camera.

Assuming that the camera's IP address is **192.168.0.100**, you can access it by opening the Web browser and typing the following address into Web browser's address bar:

http://192.168.0.100

Upon successful connection to the camera, the user interface called **Web Configurator** would appear together with the login page. The HTTP port number was not added behind the IP address since the default HTTP port of the camera is 80, which can be omitted from the address for convenience.

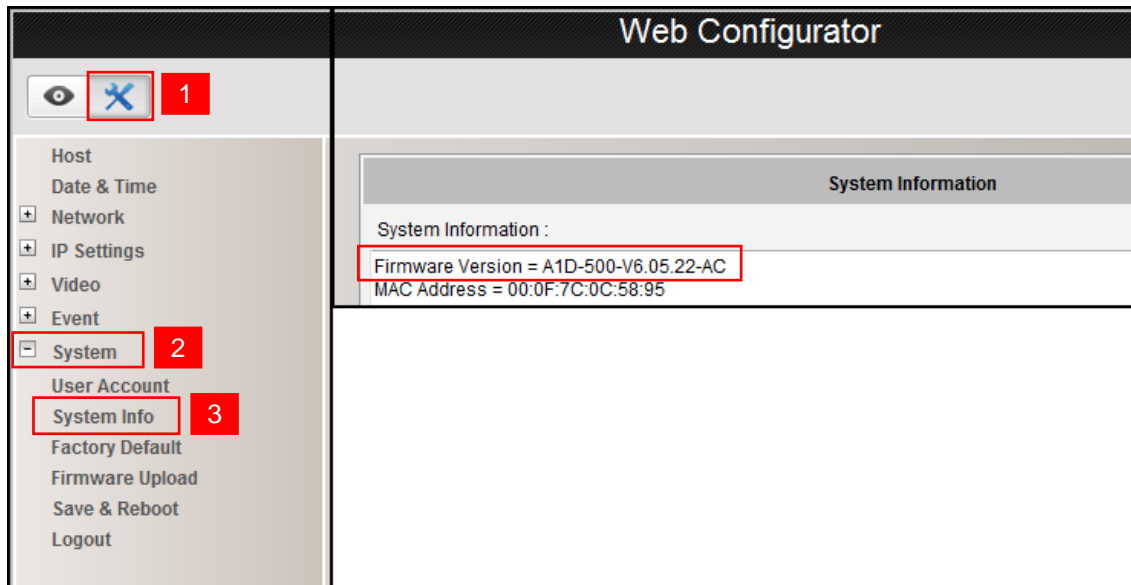


Before logging in, you need to know the factory default Account and Password of the camera.

Account: **Admin**

Password: **123456**

To check the firmware version through the Web Configurator, access the **Setup** page and click **System > System Info**.



For further operations, please refer to the **Firmware User Manual** downloadable from the website (www.acti.com).

Safety Information

Read these instructions

You should read all the safety and operating instructions before using this product.

Heed all warnings

You must adhere to all the warnings on the product and in the instruction manual. Failure to follow the safety instruction given may directly endanger people, cause damage to the system or to other equipment.

Trademarks

All names used in this manual are probably registered trademarks of respective companies.

Liability

Every reasonable care has been taken during the writing of this manual. Please inform your local office if you find any inaccuracies or omissions. We cannot be held responsible for any typographical or technical errors and reserve the right to make changes to the product and manuals without prior notice.

Cleaning

Disconnect this video product from the power supply before cleaning.

Attachments

Do not use attachments not recommended by the video product manufacturer as they may cause hazards.

Do not use accessories not recommended by the manufacturer

Only install this device in a dry place protected from weather

Servicing

Do not attempt to service this video product yourself. Refer all servicing to qualified service personnel.

Damage Requiring service

Disconnect this video product from the power supply immediately and refer servicing to qualified service personnel under the following conditions.

- 1) When the power-supply cord or plug is damaged
- 2) If liquid has been spilled, or objects have fallen into the video product.
- 3) If the inner parts of video product have been directly exposed to rain or water.
- 4) If the video product does not operate normally by following the operating Instructions in this manual. Adjust only those controls that are covered by the instruction manual, as an improper adjustment of other controls may result in damage, and will often require extensive work by a qualified technician to restore the video product to its normal operation.

Safety Check

Upon completion of any service or repairs to this video product, ask the service technician to perform safety checks to determine if the video product is in proper operating condition.