

## 1. Package Contents

Thank you for purchasing PLANET Industrial 1-port RS422/485 Modbus Gateway, IMG-110T. "Industrial Modbus Gateway" mentioned in this quick installation guide refers to the IMG-110T.

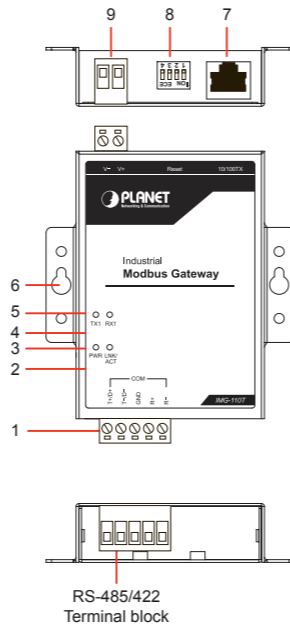
Open the box of the Industrial Modbus Gateway and carefully unpack it. The box should contain the following items:



If any item is found missing or damaged, please contact your local reseller for replacement.

## 3. Physical Introduction

1	RS422/485 Serial
2	Ethernet port LED indicator (LNK/ACT)
3	Power LED indicator
4	Serial receive data indicator (RX1)
5	Serial transmit data indicator (TX1)
6	Wall mounting Kits
7	10BASE-T /100BASE-TX
8	Reset DIP switch (Please refer to Chapter 5 for detail)
9	Power input 9~48VDC



## 4. Starting Web Management

The following shows how to start up the **Web Management** of the Industrial Modbus Gateway. Note the Industrial Modbus Gateway is configured through an Ethernet connection. Please make sure the manager PC must be set to the same **IP subnet address**.

For example, the default IP address of the Industrial Modbus Gateway is **192.168.0.100**, then the manager PC should be set to **192.168.0.x** (where x is a number between 1 and 254, except 100) and the default subnet mask is 255.255.255.0.

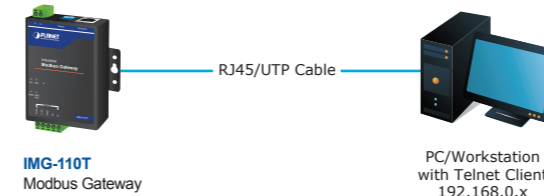


Figure 4-1: IP Management Diagram

3. After entering the username and password, the main screen appears as Figure 4-3 shows.



Figure 4-3: Web Main Screen of Industrial Modbus Gateway

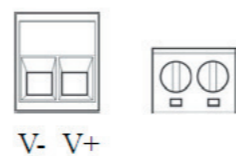
## 2. Requirements

- Ethernet Port Connection
- Workstations running Windows XP/2003/Vista/7/8/2008/10, MAC OS X or later, Linux, UNIX, or other platforms are compatible with TCP/IP protocols.
- Workstations are installed with Ethernet NIC (Network Interface Card)
  - Network cables -- Use standard network (UTP) cables with RJ45 connectors.
  - The above PC is installed with Web browser and JAVA runtime environment plug-in.

**Note**  
It is recommended to use Internet Explorer 8.0 or above to access the Industrial Modbus Gateway. If the Web interface of the Industrial Modbus Gateway is not accessible, please turn off the anti-virus software or firewall and then try it again.

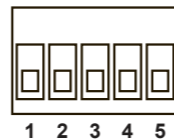
### Wiring the Power Inputs

- The 2-contact terminal block connector on the top panel of Industrial Modbus Gateway is used for DC power input and the DC power input range is **9-48V**.



### Serial Port Connection

- The 5-contact terminal block connector on the lower panel of Industrial Modbus Gateway is used for RS422/485 connections.



PIN	RS-485 PIN Define	RS-422 PIN Define
1	D+	T+
2	D-	T-
3	GND	GND
4	--	R+
5	--	R-

### Logging in to the Industrial Modbus Gateway

1. Use Internet Explorer 8.0 or above Web browser and enter IP address <http://192.168.0.100> to access the Web interface.
2. When the following dialog box appears, please enter the default user name and password "admin". The login screen in Figure 4-2 appears.

Default Username: **admin**  
Default Password: **admin**

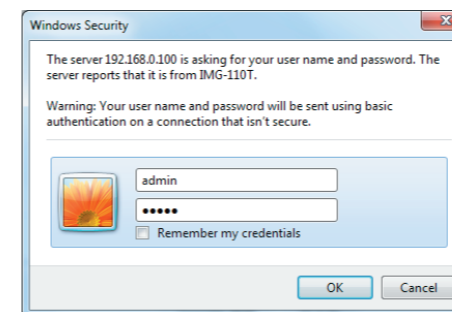


Figure 4-2: Web Login Screen

The Industrial Modbus Gateway Menu on the left of the Web page lets you access all the commands and statistics the Industrial Modbus Gateway provides.

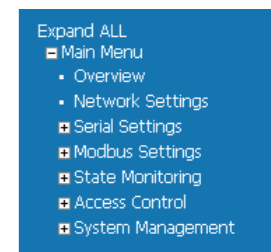


Figure 4-4: Industrial Modbus Gateway Menu

Now, you can use the Web management interface to continue the Industrial Modbus Gateway management. Please refer to the user's manual for more.

## 5. Recovering Back to Default Configuration

### ■ IP Address has been changed or admin password has been forgotten –

To reset the IP address to the default IP Address "192.168.0.100" or reset the login password to default value, there are two solutions, please kindly refer to following for more detail.

1: Reset to default through hardware DIP switch

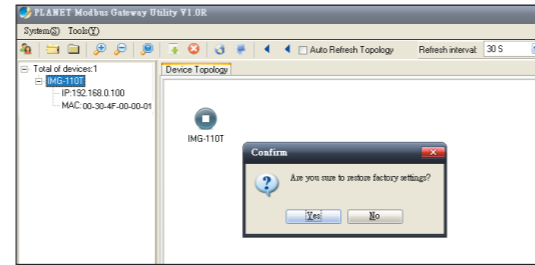
1.1: Find the hardware DIP switch that near RJ45 port of Industrial Modbus Gateway.

1.2: Adjust DIP 2 at "ON" position and DIP 1, 3, 4 remain at original position.

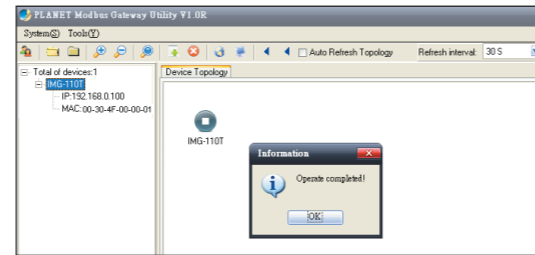


- 9 -

2.4: Click "Yes" when the "Are you sure to restore factory settings" pop up window appears.



2.5: Press "OK" to complete the factory default procedure.



- 11 -

1.3: After adjust the DIP switch; please power off and power on the Industrial Modbus Gateway to take effect.



Note

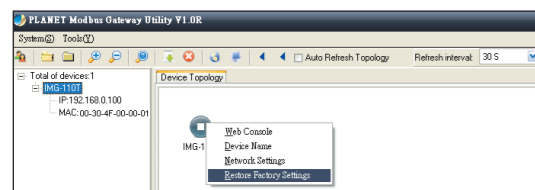
After reset Industrial Modbus Gateway with default IP address and username/password: admin, please adjust the DIP 2 to lower position. Otherwise, the Industrial Modbus Gateway will continue reset to factory default mode.

2: Reset to default through PLANET Modbus Gateway Utility

2.1: Active PLANET Modbus Gateway Utility.

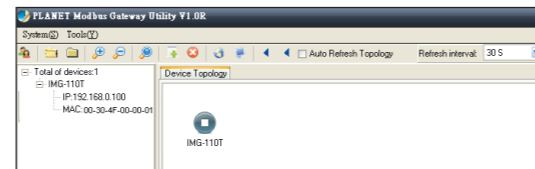
2.2: Search the Industrial Modbus Gateway that needs to be reset to default and choose the device.

2.3: Right-click and choose the "Reset Factory Settings".



- 10 -

2.6: Search the device again and you will see the Industrial Modbus Gateway with default IP address, and username and password: "admin".



- 12 -

## Industrial Modbus Gateway IMG-110T

[www.PLANET.com.tw](http://www.PLANET.com.tw)

## Industrial 1-Port RS422/485 Modbus Gateway



PLANET Technology Corp.  
11F., No. 96, Minquan Rd., Xindian Dist., New Taipei City 231, Taiwan  
2011-AH1230-000



## 6. Customer Support

Thank you for purchasing PLANET products. You can browse our online FAQ resource and user's manual on PLANET Web site first to check if it could solve your issue. If you need more support information, please contact PLANET media converter support team.

PLANET online FAQ :  
<http://www.planet.com.tw/en/support/faq.php?type=3>

Media Converter support team mail address :  
[support\\_converter@planet.com.tw](mailto:support_converter@planet.com.tw)

IMG-110T User's Manual :  
<http://www.planet.com.tw/en/support/download.php?type=3&e1=22153&model=48988&type=3>



Copyright © PLANET Technology Corp. 2017.  
Contents are subject to revision without prior notice.  
PLANET is a registered trademark of PLANET Technology Corp. All other trademarks belong to their respective owners.

- 13 -