



**ACTi**  
Connecting Vision

# Quick Installation Guide

**INR-460**

200-Channel 8-Bay Rackmount Standalone NVR

# BEFORE YOU START

Thank you for purchasing ACTi Standalone Network Video Recorder. This guide contains all the information you need to quickly set up ACTi INR server system via local interface.

For detailed instructions on installation, operation and how to log in to INR as a web client, please refer to the product manuals provided on ACTi corporate website.

The items below are prerequisite for installation:

- Network cameras
- Network cables
- Network switch
- Monitor (with VGA, DVI or Display Port cable)
- USB mouse
- At least one ACTi-certified 3.5-inch SATA hard disk

Find the certified disk models at <http://www.acti.com/hddselector>

# HARDWARE INSTALLATION

## UNPACK

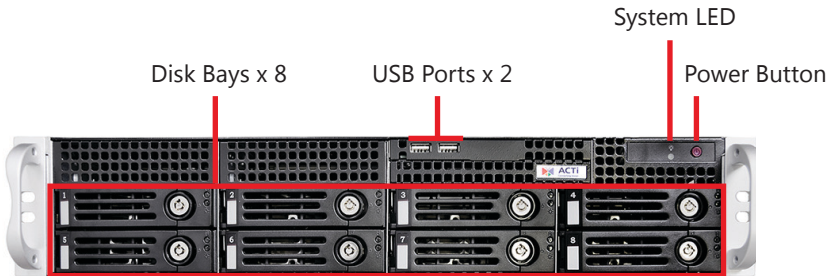
This package contains:

- INR x 1
- HDD Tray Keys Pack x 1
- Disk Screws Pack x 1
- Front Cover x 1
- Power Cord x 1
- Universal Converter x 1
- Warranty Card x 1
- Quick Installation Guide x 1

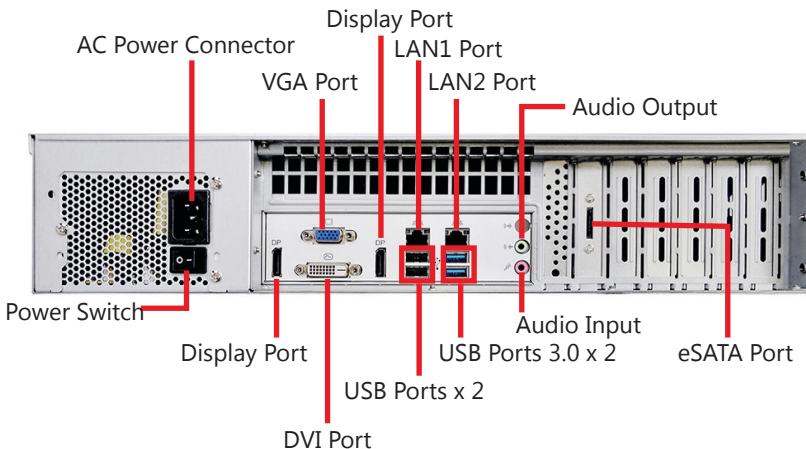


## AT A GLANCE

### Front Panel



### Rear Panel



## RACKMOUNT THE UNIT

This unit is designed to be mounted on a standard server rack, which occupies 2U (3.5") of vertical space.

1. Allow a minimum of 5 cm clearance at the front and the rear for front-to-back airflow of the unit.
2. Prepare a rack shelf rated for the unit's weight or purchase the rail kit from ACTi, and install that to support the entire unit.
3. Secure the unit onto the rack.



INR Sliding Rail Kit



## HARD DISK INSTALLATION

Make sure this unit is turned off, and insert the hard disks into the disk bays following the sequence of tray numbers.

### REMOVE THE TRAY

#### Step 1

Slide the lock tab aside, and the hinge tab will pop out by itself.



#### Step 2

Hold the tab lever and pull out the tray.



### MOUNT THE DISK

#### Step 3

Loosen the two screws on the tray to remove the dummy disk. Secure the hard disk on the tray with the provided disk screws. Make sure the disk connector faces towards the SATA contacts inside the unit.

### INSTALL THE TRAY

#### Step 4

Place your thumb on the lock to push the tray into position in the chassis.



#### Step 5

Press the hinge tab until it clicks into place.

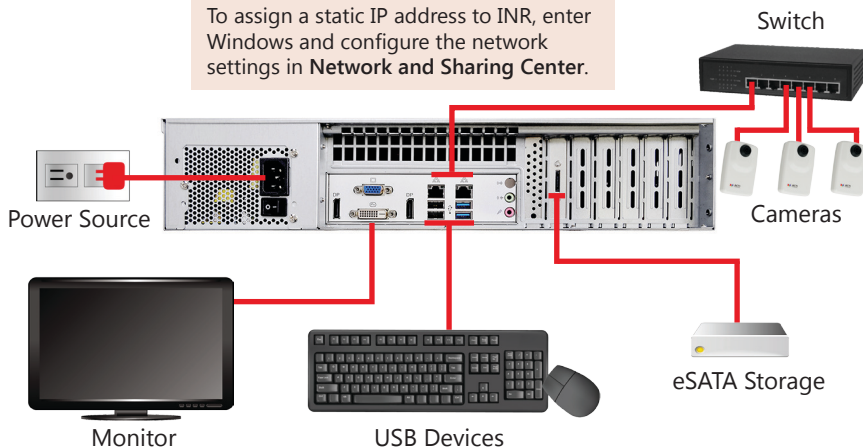


## CONNECT THE DEVICES

The example below displays a network consisting of only INR, network cameras and required peripherals. Please remember to enable the DHCP service on your router for INR to obtain an IP address automatically.

### Note

To assign a static IP address to INR, enter Windows and configure the network settings in **Network and Sharing Center**.



## ATTACH THE FRONT COVER

After you finish configuring INR system, remember to lock the disk trays using the provided keys and attach the front cover to the unit's front panel.

### Step 1

Align the left end hooks to the holes on the unit's left handle.



### Step 2

Press the latch and push the right end towards the unit's right handle until it clicks into place.



Without Front Cover



With Front Cover



## START-UP

1. On the unit's rear panel, press down the **Power Switch** to the side with "I" mark.
2. On the unit's front panel, press down **Power Button** to turn on the unit.
3. As this unit starts up, you will enter Windows logon screen, and input the password "123456" to log in as administrator.

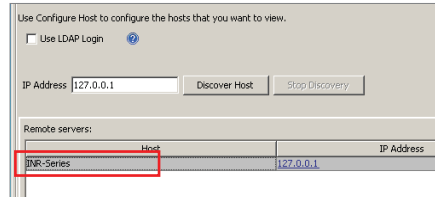


# CREATE HARDWARE RAID (OPTIONAL)

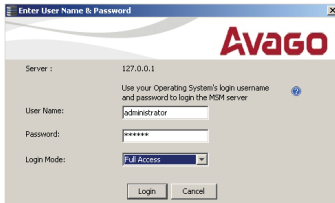
INR-460 supports hardware RAID configuration, and the making of disk arrays is done with the bundled software **MegaRAID Storage Manager**.

1. On Windows Desktop, double-click on the shortcut  to initialize **MegaRAID Storage Manager**.

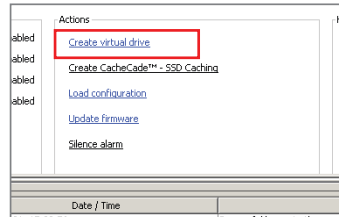
2. Select **INR-Series** on the Remote Servers list.



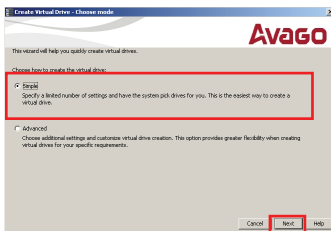
3. Log in with default username/ password: **Administrator/123456**



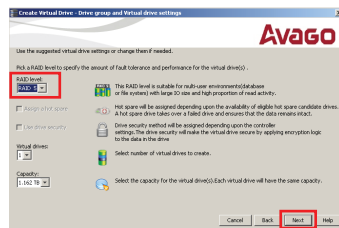
4. Click **Create virtual drive**.



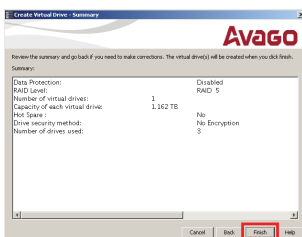
5. Select **Simple**, then click **Next**.



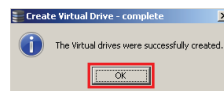
6. Select **RAID 5**, then click **Next**.



7. Click **Finish**.



8. Click **OK** to complete RAID configuration.

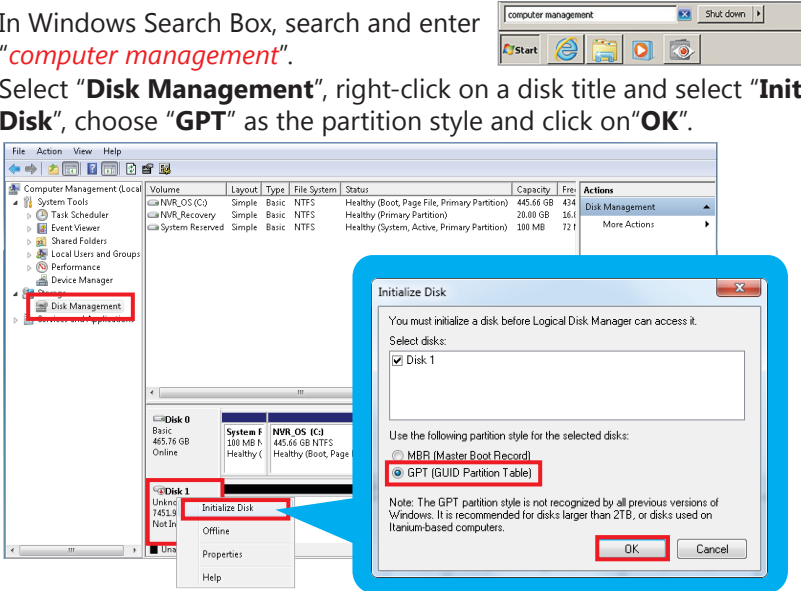


# SOFTWARE CONFIGURATION

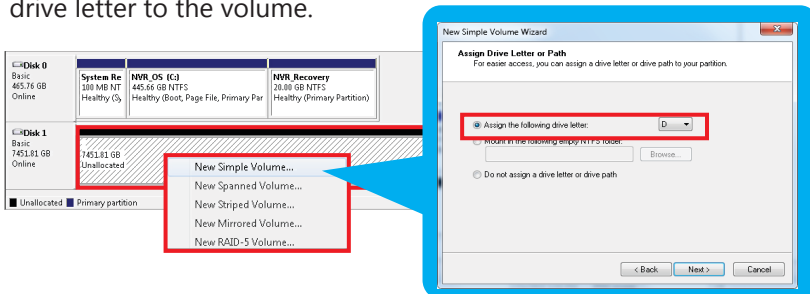
## CREATE DISK VOLUMES

Use **Windows Disk Management** to create disk volumes so that INR can access the available storage space.

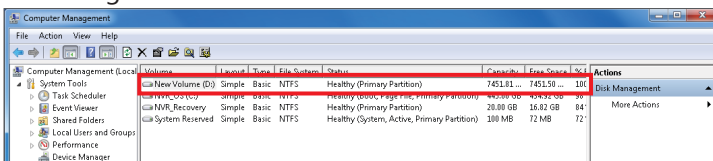
1. In Windows Search Box, search and enter "*computer management*".
2. Select "**Disk Management**", right-click on a disk title and select "**Initialize Disk**", choose "**GPT**" as the partition style and click on "**OK**".



3. Right-click on the initialized disk and select the volume type to make a new volume. On New Volume Wizard window, make sure you assign a proper drive letter to the volume.




4. After the volume is created, it is shown on volume list and is ready for recording.



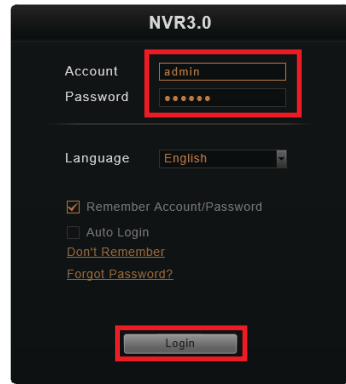
## LOG IN



On Windows Desktop, double-click on  to enter NVR interface. Input the default account and password to log in.

**Account: admin**  
**Password: 123456**

"123456" is the default password of NVR system administrator's user account. For security reasons, please remember to change it.

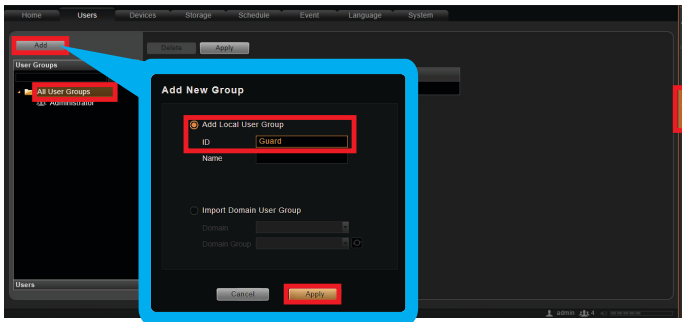


The login screen for NVR3.0. It features a dark background with white text. The 'Account' field contains 'admin' and the 'Password' field contains '\*\*\*\*\*'. The 'Language' dropdown is set to 'English'. There are checkboxes for 'Remember Account/Password' (checked), 'Auto Login', and 'Don't Remember'. A 'Forgot Password?' link is present. A 'Login' button is at the bottom right.

## CREATE USERS

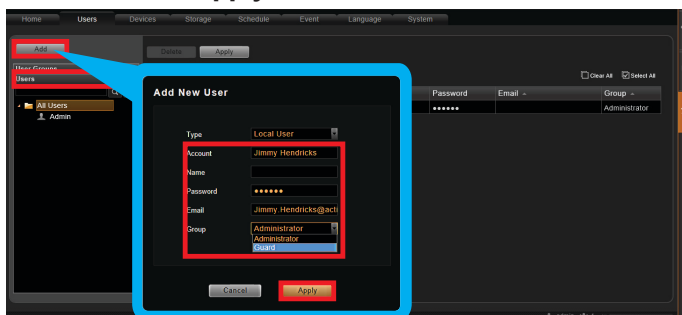
On NVR screen, click **Setup** button to enter **Setup** page and then **Users** tab.

1. Select "**User Groups**", click "**Add**" to start adding a new user group.
2. Input group ID and click "**Apply**".



The 'Add New Group' dialog box in the NVR Users panel. It has a title bar with 'Add' and 'Apply' buttons. The 'Add Local User Group' radio button is selected. The 'ID' field contains 'Guard'. There is a 'Name' field. Below, there are options for 'Import Domain User Group' with 'Domain' and 'Domain Group' dropdowns. 'Cancel' and 'Apply' buttons are at the bottom.

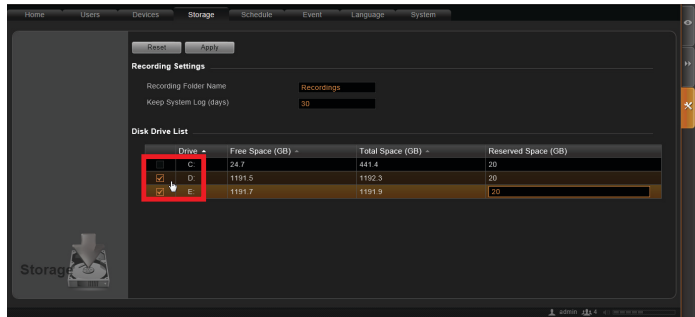
3. Click on the title bar of **Users** panel, click "**Add**" to start adding a new user.
4. Input user's **Account**, **Password**, **Email** address and select its User **Group**, and then click "**Apply**".



The 'Add New User' dialog box in the NVR Users panel. It has a title bar with 'Add' and 'Apply' buttons. The 'Type' dropdown is set to 'Local User'. The 'Account' field contains 'Jimmy Hendricks', 'Name' contains 'Jimmy Hendricks', 'Password' contains '\*\*\*\*\*', and 'Email' contains 'Jimmy.Hendricks@xcti.com'. The 'Group' dropdown is set to 'Administrator'. There are 'Cancel' and 'Apply' buttons at the bottom.

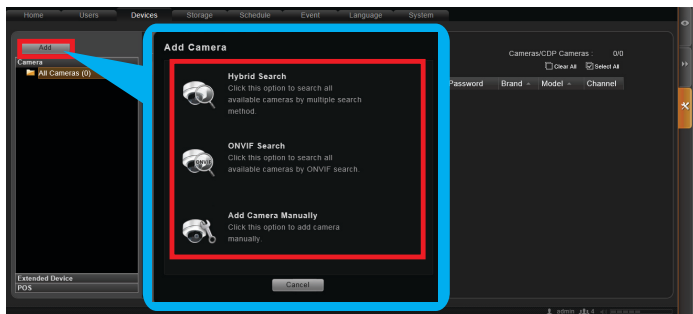
## SELECT STORAGE DRIVES

1. Go to **Setup** page and then **Storage** tab.
2. On **Disk Drive List**, de-select C Drive, and select other storage drives.
3. Click **"Apply"**.



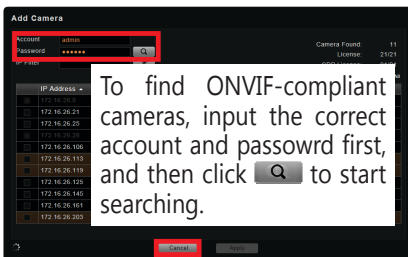
## ADD CAMERAS

1. Go to **Setup** page and then **Devices** tab.
2. Click **"Add"**.
3. Choose a search method based on your network environment and camera brand.



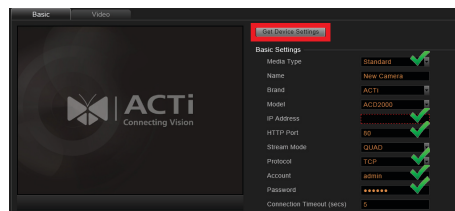
### Search Cameras

Use **"Hybrid Search"** to auto-search the network for all cameras, or **"ONVIF Search"** for ONVIF-compliant cameras of any brand. After selecting your desired cameras, click **"Apply"**.



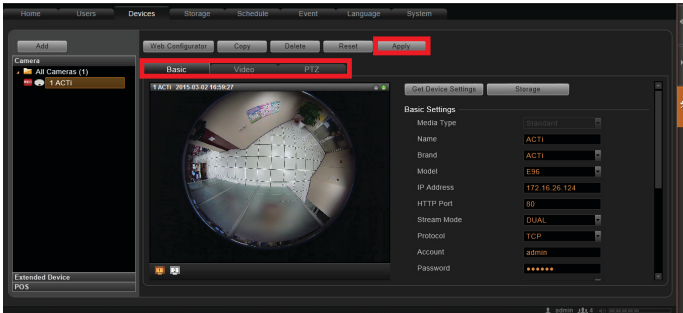
### Add Camera Manually

If you are adding a camera located in another network, use **"Add Camera Manually"**. Fill in **Media Type, Protocol, IP Address, HTTP Port, Account** and **Password**. Finally, click **"Get Device Settings"** and then **"Apply"**.



## CONFIGURE CAMERA SETTINGS

1. Go to **Setup** page and then **Devices** tab. Choose the camera from **Camera List**.
2. Select **Basic**, **Video**, **PTZ**, or **Preset Tour** tab to configure related settings.



3. Click **"Apply"** to save the settings.

## SET RECORDING SCHEDULE

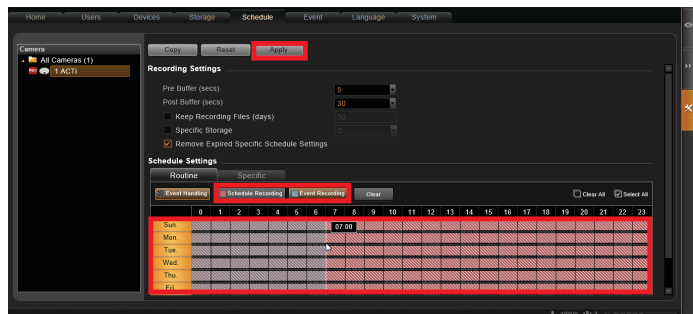
The recording service automatically starts full-time recording for a newly added camera. You can modify the recording schedule to suit your needs.

1. Go to **Setup** page and then **Schedule** tab. Select the camera from **Camera List**.
2. Choose a recording mode:  **Schedule Recording** or  **Event Recording**

**Schedule Recording:** Records video continuously during the scheduled session.

**Event Recording:** Records video based on specific triggers such as when a motion is detected by the camera.





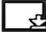

3. Drag on the time table to define the time session.
4. Click **"Apply"**.



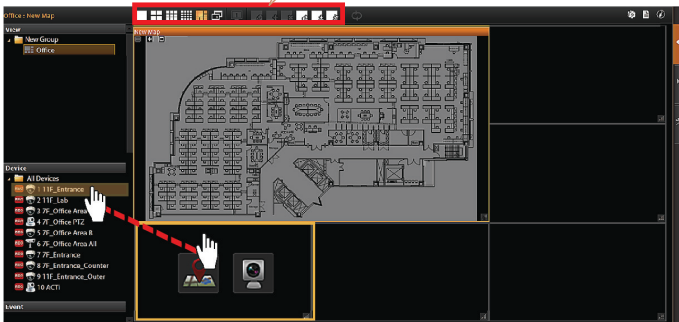
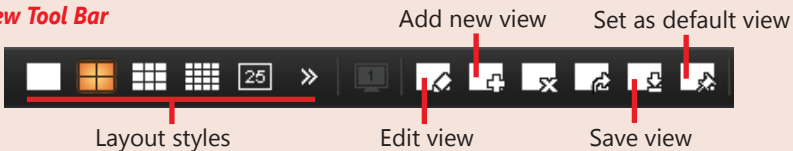
### Note

If you have any question during system installation, please feel free to contact our engineers via **ACTi Customer Help Desk** platform at <http://www.acti.com/CHD>

## CUSTOMIZE VIEWS

1. Go to **Live View** page. On top of the screen, click on  on view tool bar to create a new layout, then click on  to enter edit mode.
2. Select a layout style.
3. To add a camera view, pull a camera from **Camera List** to a channel. To add a map view, select a channel and click on , upload the map, drag the lower right corner  to adjust channel size.
4. On view tool bar, click on  to save this view.
5. You can set this view as default view by clicking on .

### View Tool Bar



## VALIDATION



To check live streaming of all channels, go to Live View page, double-click on  on **Camera List**.



To check recording, go to **Playback** page, and then select (double-click) a view from **View List** or a camera from **Camera List**. Drag on the time bar to see the recorded video.

Due to continuous product improvements, some contents may have changed from the time this documentation was printed. You can download the latest user documentation, which shall prevail over the printed version provided in the package, from <http://www.acti.com/downloadcenter>.