

# MMS-100



- 1-bay Standalone Media Management Server
- Intel Core i5-6500TE, 8GB

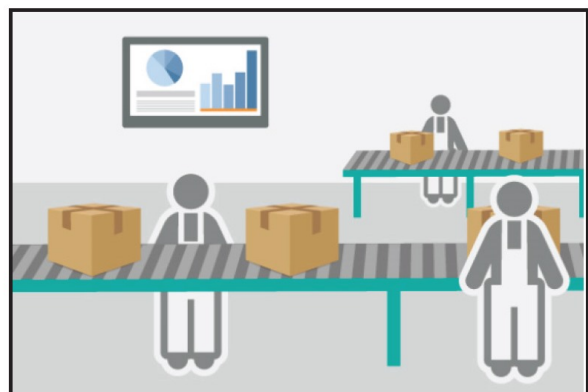
MMS-100 is a standalone **Media Management Station (MMS)** which can send contents to several display servers remotely and show helpful information with one click of a button.

## General Advertising



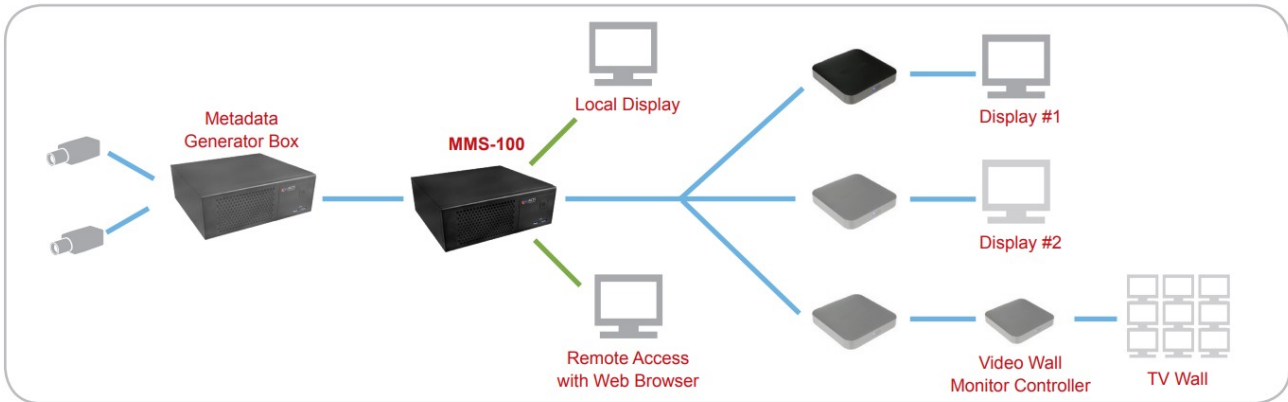
Display customized and demographically-targeted content based on the trigger of proximity to particular products and detection of any demographic group, boosting sales.

## Notifications, Reminders, Instructions



Display useful information, such as real-time production figures, flight schedules in airports, real-time financial graphs, alerts on emergency, and much more.

▶ **\*\*Solution Diagram\*\***



▶ **Specifications**

**Device**

Product Type	Media Management Server
Maximum Number of Devices	150 Media Display Servers

**Hardware**

CPU	Intel Core i5-6500TE
RAM	8GB

**License**

License required	Yes
Free License	4

**Market Application Suite Features**

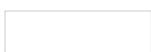
Dashboard	Yes
Device Management	Yes
Remote Sync to Device	Yes
Customized Layout	Yes
Schedule Display	Daily, Weekly, Monthly, Yearly, By Priority
Playlist Support	Yes

**Media Content Management**

Video Type	MP4
Image Format	MJPEG, PNG
Other Media Content	Web page

**Audio**

Audio Type	2-way, Mic-in, Line-out
------------	-------------------------



**Network**

Ethernet Port	Total ports: 2 port(s) Non-PoE: 2 port(s), Ethernet (1000 Base-T), RJ-45 connector
---------------	--

**System**

Server Operating System	Windows 10 IoT
USB	6-Port USB 3.0

**Storage**

System Drive	M.2 SSD, 256GB
Storage Bay	SATA, Max. 1 Disk(s) (Optional for project request)
HDD Size	3.5"

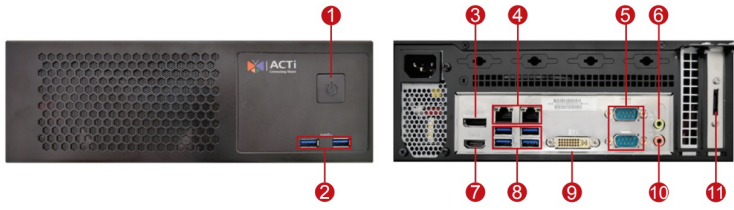
**Interface**

Serial Port	2 x RS-232
Audio Interface	1/1, 3.5mm Phone Jack
External Storage Interface	eSATA, iSCSI
Expansion Slots Available	1 x PCIe 3.0 (x16)
Local Display Interface	HDMI x 1, DVI x 1, Display Port x 1,

**General**

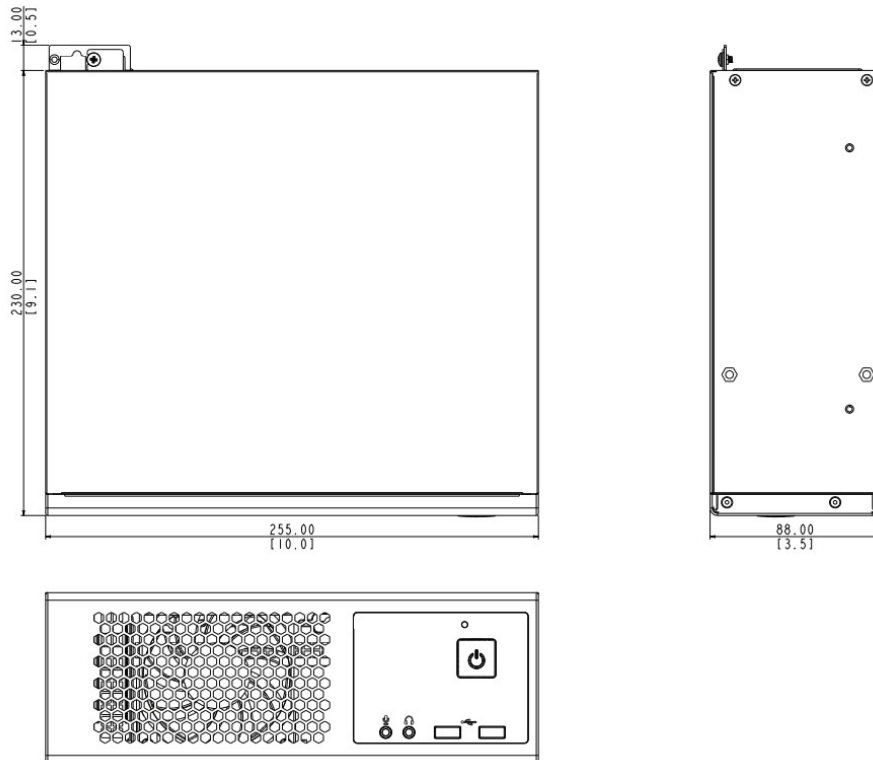
Power Source	AC 100-240V
Power Supply	250W
Weight	3172g (6.993lb)
Dimensions	(W x H x D): 255mm x 88mm x 230mm (10" x 3.5" x 9.1")
Bundled Accessories	Power cord
Fan	Yes
Operating Temperature	0°C ~ 40°C (32°F ~ 104°F)
Operating Humidity	0% - 85% RH
Approvals	CE, FCC
Color	Black
Warranty	3 Year(s). For extended warranty offering, see <a href="http://www.acti.com/support/warranty">http://www.acti.com/support/warranty</a>

## ▶ Photo Indication



- 1 Power Button
- 2 USB 3.0 Port (2)
- 3 Display Port
- 4 Ethernet Port (LAN, WAN)
- 5 Serial Port
- 6 Audio Output
- 7 HDMI Port
- 8 USB 3.0 Ports
- 9 DVI Port
- 10 Audio Input
- 11 eSATA Port

## ▶ Dimension Diagram



Unit: mm [inch]

## ▶ Ordering Information

LMAS4000	<p>The license is for the dashboard, event handling and reporting features of People Counting, Heatmap, Dwell Time, ALPR, Parking Lot Management, Incident Management, Media Management, per channel. The license does not cover the analytics algorithm of above listed technologies. Price listed is for single channel add-on license to work on Retail Application Suite, RAS-100, Parking Lot Management System, PLM-100, Incident Management System, IMS-100, Media Management Server, MMS-100, MDD-100, Meeting Resources Management Server or MRS-100. The number of add-on channel supported: 1-1000 (Incident Management System, IMS-100), 1-300 (MMS-100), No Limit (Media Management Server), 1-100 (RAS-100), No Limit (Retail Application Suite), 1-9 (MDD-100, K00012, K00015, K00023), 1-8 (K00013, K00016), 1-7 (K00025), 1-4 (PLM-100), No Limit (Parking Lot Management System), No Limit (Meeting Resources Management Server).</p>
LMAS4000-12	<p>The license is for the dashboard, event handling and reporting features of People Counting, Heatmap, Dwell Time, ALPR, Parking Lot Management, Incident Management, Media Management, per channel. The license does not cover the analytics algorithm of above listed technologies. Price listed is for single channel add-on license to work on Retail Application Suite, RAS-100, Parking Lot Management System, PLM-100, Incident Management System, IMS-100, Media Management Server, MMS-100, MDD-100, Meeting Resources Management Server or MRS-100. The number of add-on channel supported: 1-1000 (Incident Management System, IMS-100), 1-300 (MMS-100), No Limit (Media Management Server), 1-100 (RAS-100), No Limit (Retail Application Suite), 1-9 (MDD-100, K00012), 1-8 (Parking Lot Management System), 1-4 (PLM-100), No limit (Parking Lot Management System), No Limit (Meeting Resources Management Server). This contract continues for 12 months starting at user defined date after payment.</p>
LMAS4000-6	<p>The license is for the dashboard, event handling and reporting features of People Counting, Heatmap, Dwell Time, ALPR, Parking Lot Management, Incident Management, Media Management, per channel. The license does not cover the analytics algorithm of above listed technologies. Price listed is for single channel add-on license to work on Retail Application Suite, RAS-100, Parking Lot Management System, PLM-100, Incident Management System, IMS-100, Media Management Server, MMS-100, MDD-100, Meeting Resources Management Server or MRS-100. The number of add-on channel supported: 1-1000 (Incident Management System, IMS-100), 1-300 (MMS-100), No Limit (Media Management Server), 1-100 (RAS-100), No Limit (Retail Application Suite), 1-9 (MDD-100, K00012), 1-8 (Parking Lot Management System), 1-4 (PLM-100), No Limit (Parking Lot Management System), No Limit (Meeting Resources Management Server). This contract continues for 6 months starting at user defined date after payment.</p>