

Quick Installation Guide

32-Channel 2-Bay Transportation Standalone NVR

MNR-310

BEFORE YOU START

Thank you for purchasing ACTi MNR-310 Transportation Standalone Network Video Recorder. This guide contains all the information you need to quickly set up the NVR server system via local display interface. For detailed installation or operation instructions, please search for System Administrator's Manual or User's Manual on <http://www.acti.com/downloadcenter>

The items below are required for installation:

- A monitor with HDMI or VGA input and the cable
- A USB mouse
- A USB keyboard
- Network Cameras
- Network cables and a POE switch

Use ACTi POE Switch Selector - <http://www.acti.com/switchselector> to find a suitable switch that can supply sufficient power to your cameras.

- One or two 2.5-inch SATA disks for recording

Use ACTi Hard Disk Selector - <http://www.acti.com/hddselector> to find ACTi-certified disks.

01 UNPACK

The package includes the following items:

- MNR-310 unit x 1



- Warranty Card x 1



- Quick Installation Guide x 1



- Power Cord x 1



- Installation Accessories



02 AT A GLANCE

Front Panel

Power Switch USB 2.0 Ports

SIM Card Slot



Line-out Jack Mic-in Jack Hard Disk Bays

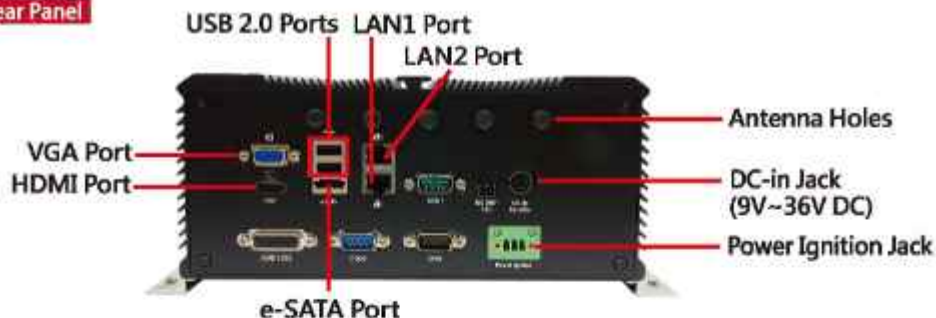


LED Indicators

- 1 System Power
- 2 LAN1 Link Status
- 3 LAN2 Link Status
- 4 Hard Disk Activity
- 5 LAN1 Network Activity
- 6 LAN2 Network Activity

02 AT A GLANCE

Rear Panel



03 INSTALL HARD DISKS

Remove the Tray

Step 1

Manually loosen the two handscrews that secure the tray, and pull the empty tray out.



Mount the Disk

Step 2

Secure the disk on the tray with four disk screws provided. Make sure the disk connector faces towards the end of the tray.



Install the Tray

Step 3

Push the tray back into the bay.



Secure the Tray

Step 4

Lock the handscrews with your fingers. Push and hold the screw heads while winding them clockwise until they stop.



NOTE: MNR is a rugged in-vehicle solution designed for harsh mobile environment and powered directly from the vehicle battery, the installation of which requires complex skills and knowledge. We strongly recommend that the installation be left to **trained professionals**.

04 INSTALL OPTIONAL MODULES

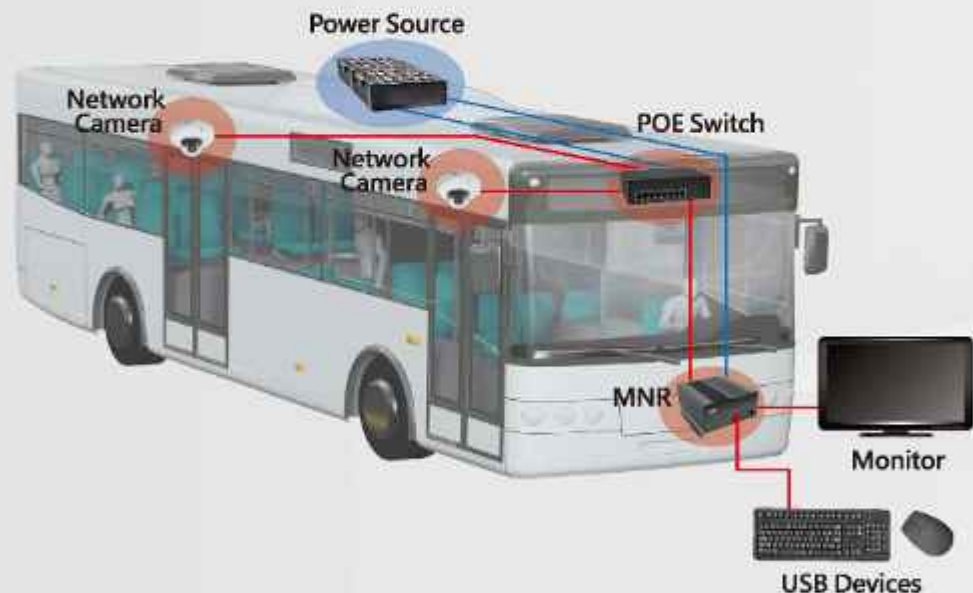
To fulfill certain requirements of your project, you may contact ACTi sales representative to purchase the following optional modules:

- Wireless Module - provides Wi-Fi connectivity
- 3G/4G Module - provides 3G/4G connectivity
- GPS Module - continuously provides accurate satellite positioning data
- Power Ignition Module - ensures the MNR is supplied with sufficient power voltage for stable system operation

Please follow the instructions in Administrator's Manual to install these modules onto this unit, and use the software utilities provided to complete the initial setup on MNR.

05 CONNECT THE DEVICES

The example below displays a local network consisting of only MNR, network cameras and required peripherals.



1. Use at least four screws appropriate for the surface you will be installing on to secure MNR in the vehicle.
2. Install the network cameras following their installation guides.
3. Connect the cameras and MNR to the POE switch via network cables.
4. Connect other external audio input/output or storage devices to MNR. (Optional)
5. Connect MNR via the supplied power cable to the power source.

NOTE: The connector of the power cord is designed to ensure that the cord will remain locked in place even with vibration. While connecting the cord to this unit, please unhook the safety lock as below:

Step 1
Pull the safety lock towards yourself



Step 2
Hold it while inserting the connector into the jack



Step 3
Release it when you hear a click sound



06 START-UP

1. On MNR front panel, press down the Power Switch, and it will turn from red to blue.



Standby

Powered-On

2. As this unit starts up, you will enter Windows operation system directly.
3. On Windows log on screen, input "123456" to enter windows system.



NOTE: To assign a static IP address to MNR, after you enter Windows operating system, configure the network settings in Windows Network and Sharing Center.

07 CREATE SOFTWARE RAID

Use Windows Disk Management to create storage volumes before MNR can access the available storage space, and create the software RAID configuration on the volumes in the mean time.

1. In Windows Search Box, search and enter "Computer Management".



2. Select "Disk Management", right-click on a disk title and select "Initialize Disk", choose GPT as the partition style and click "OK".



3. Right-click on an initialized disk and select the volume (software RAID) type to make a new volume. Make sure you assign the desired drive letter and volume label to this volume. Repeat this step to create other volumes you need.




4. After the volume is created, it is shown on volume list, which is ready for recording.

Volume	Layout	Type	File System	Status	Capacity
C: (C:)	Simple	Basic	NTFS	Healthy (Boot, Page File, Recovery Partition)	29.92 GB
Mirrored Volumes (D:)	Mirror	Dynamic	NTFS	Healthy	

NOTE: It is recommended that you select disks of the same model and capacity to make a Striped volume or a Mirrored volume.

08 LOGIN

On Windows Desktop, double-click  to enter NVR interface. Enter default account/password and click "Login".

Account: admin
Password: 123456
"123456" is the default password of NVR system administrator's user account. For security reasons, please remember to change it on Setup page - Users tab.



09 CREATE USERS

On NVR screen, click **Setup** button to go to Setup page, then **Users** tab.

- Create a User Group
 1. Select "User Groups", click "Add".
 2. Input group ID and click "Apply".
 3. Configure user group permissions and click "Apply".



- Create a User Account
 1. Select "Users", click "Add".
 2. Input user's Account, Password and select its User Group, and click "Apply".



10 SELECT STORAGE DRIVES

1. Go to Setup page then Storage tab.
2. On Disk Drive List, de-select C Drive, and select other storage drives.



3. Click "Apply".

11 ADD DEVICES

1. Go to Setup page then Devices tab.
2. On Devices tab, click "Add Device".



3. Choose a search method according to your network environment and device types.

● In LAN:

Select "Search Devices" to auto-search the network for ACTI devices, or "Search ONVIF Devices" for ONVIF-compliant devices of all brands. Choose your desired devices and click "Apply".

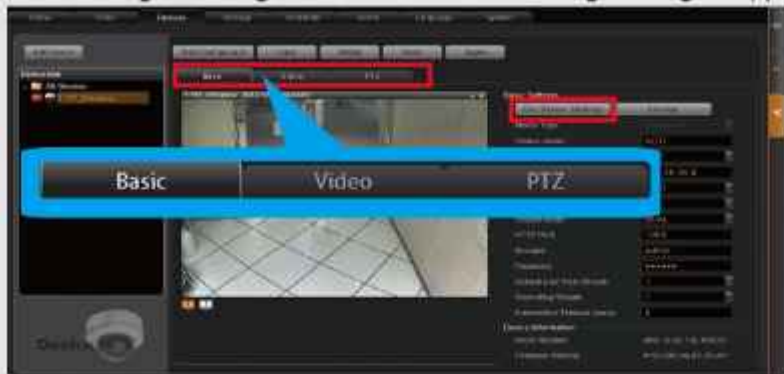
● Cross-LAN or WAN:

Select "Add Device Manually", fill in Media Type, Protocol, IP Address, HTTP Port, Account, Password, click "Get Device Settings" and then "Apply".



12 CONFIGURE CAMERA SETTINGS

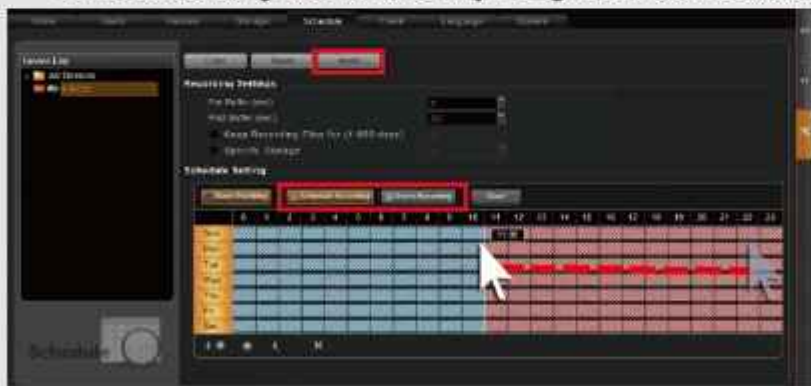
1. Go to Setup page then Devices tab. Choose the device from Device List.
2. Enter Basic / Video / PTZ tabs to configure camera settings.
3. Click Storage to configure camera device local storage settings (if applicable).



13 SET RECORDING SCHEDULE

MNR recording server automatically starts full-time recording as soon as a device is added in **Step 11**.

1. Go to Setup page then Schedule tab. Select the device from Device List.
2. Choose a recording mode - **Event Recording** or **Schedule Recording**
 - Event Recording: Records video upon being triggered by motions or external inputs.
 - Schedule Recording: Records constantly during the scheduled session.









3. Drag on time table.
4. Click "Apply".

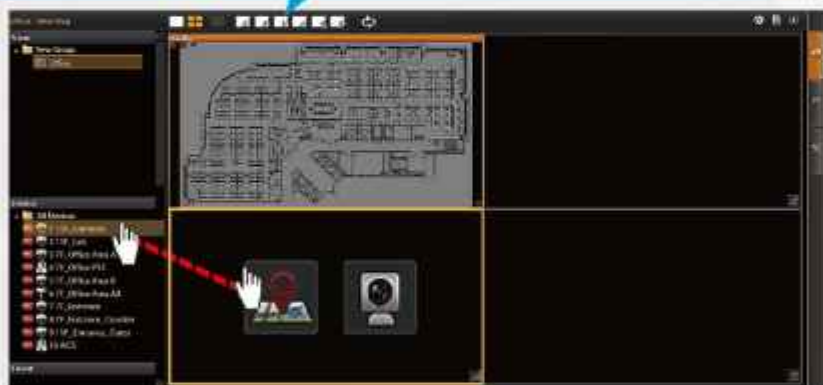
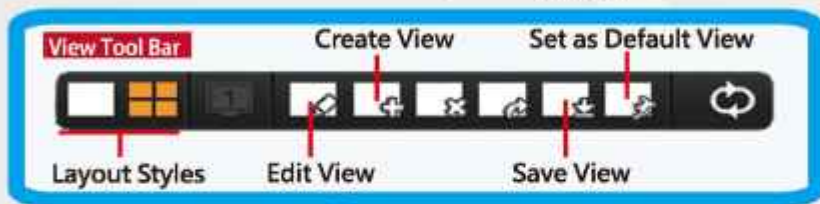
Technical Support

If you have any question during system installation, please feel free to contact our engineers via ACTi Customer Help Desk platform <http://www.acti.com/CHD>


This documentation is as accurate as possible. However, due to continuous product improvements, some contents may have changed from the time this documentation was printed. Download the latest user documentation, which shall prevail over the printed version provided in the package, from ACTi corporate website.

14 CUSTOMIZE VIEWS

1. Go to Live View page. On top of the screen, click  on View Tool Bar to create a new layout, then click  to enter edit mode.
2. Select a layout style.
3. ● To add a camera view:
Pull a device from Device List to a channel.
● To add a map view:
Select a channel and click , upload the map, drag the lower right corner  to adjust channel size.
4. On View Tool Bar, click  to save this view.
5. You can set this view as default view by clicking .



15 VALIDATION

1. To check live streaming of all channels, go to Live View page, double-click on  on Device List.

2. To check recording, go to Playback page, select a view from View List or a camera from Device List. Drag on the time bar to see the recorded video.