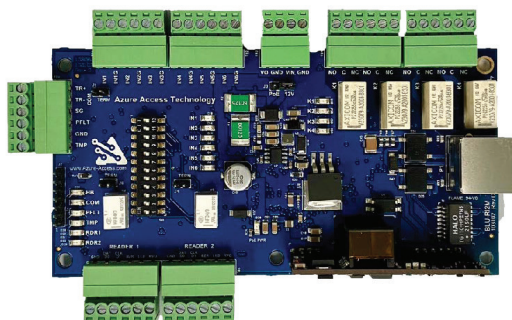


SPECIFICATIONS:



NOP-RI2MS

DownStream Reader Interface Panel



**Azure Access Technology NOP-RI2MS
Downstream Reader-Interface Panel
(2 Reader Ports, 6 Supervised Inputs, 4 Outputs)**

The NOP-RI2MS extends your access control system by fully securing 2 doors. The NOP-RI2MS supports both Wiegand and OSDP readers in standalone or paired mode. All stored data and communications are encrypted. Offline Mode allows for uninterrupted access-control functionality.

GENERAL	
Operating Temperature	-40°C~+80°C (-40°F~+176°F)
Weight	0.28lbs (126 Grams)
Dimensions	5.4" x 2.75" x .88" (137.2mm x 69.9mm x 22.35mm)
Regulatory Compliance	CE Compliant, UL 294, 294B, 2610, 1076, ULC / ORD C1076 & 60839-11-1, FCC Part 15 Class A RoHS
SECURITY	
Security	<ul style="list-style-type: none"> • Secure Boot • Firmware & Data Encrypted-at-rest • OSDP Secure Channel with custom keys • AES 128/256 - SHA256
ONBOARD I/O	
Reader Ports	2 - Reader Ports supporting Wiegand Readers or up to (2) OSDP Readers per port Open-Collector Buzzer Output (1) LED Control Signal <ul style="list-style-type: none"> • 2-wire LED support when re-purposing buzzer
Serial Port	1 - Upstream, RS485 Serial Comm Ports <ul style="list-style-type: none"> • Multi-drop up to 16 IO and/or Reader Interface Boards • 9,600 to 115,200 baud rate • 2-Wire Interface
Dipswitch Bank	1 - Dip Switch Bank for configuring Hardware Interfaces & Serial Comms
Output	4 - Form-C Relay Outputs 2A @ 30VDC MAX rating
Unsupervised Inputs	2 - Unsupervised Inputs for Cabinet Tamper & Power Failure
Supervised Inputs	6 - Supervised or Unsupervised Configurable Inputs <ul style="list-style-type: none"> • Supervised high-precision inputs with hardware and software filtering to eliminate false alarms
POWER	
Input Power (VIN)	12VDC; 190mA typical MAX current Full Load Current (2.19A Max)
Reader Port Power (Fuse Protected)	VIN Passthrough with 500mA MAX per port
AUX Port Power (Fuse Protected)	VIN Passthrough: 1A Max Current
ASSOCIATED PRODUCTS	
NOC-RIMP	Auxillary metal mounting bracket with standoffs designed for secure installation of the NOP-RI2MS in a standard triple-gang box Dimensions of 5.5" x 3.63" x 0.5" (139.7mm x 92.2mm x 12.7mm)