

# NVR 3 Corporate

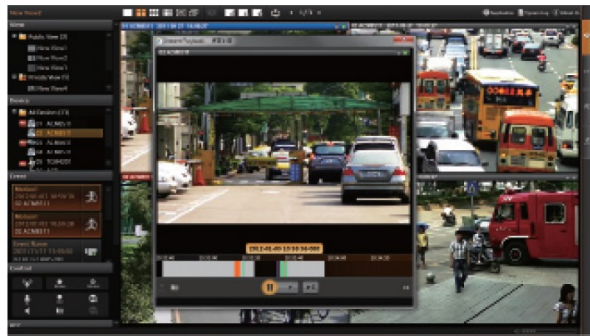


- Maximum Number of Video Devices: 200 (Free License: 1)
- Multi-Browser Support for Lite Web Client
- View Layout up to 225 Channels for workstation (v.3.0.16.70)
- System Monitoring and Notifications
- Location-based management with e-Map & Google Map
- Workstation, Web Client, Mobile Client
- Event Trigger, Response, Notification and Snapshot to Line Messenger

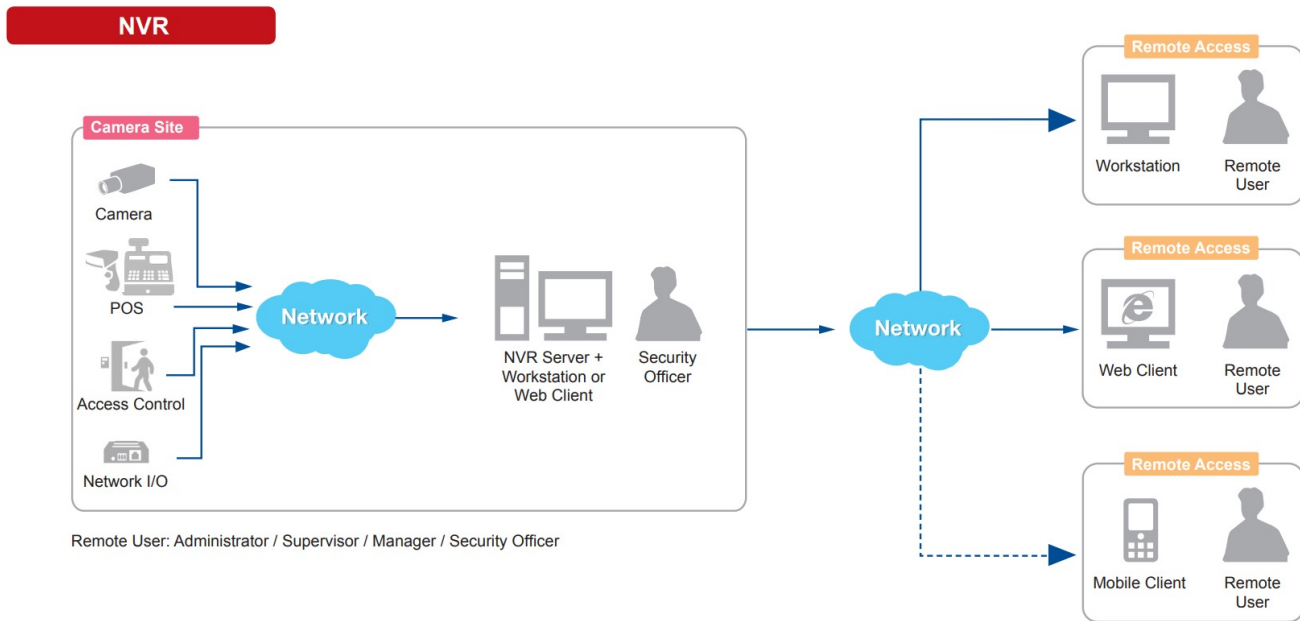
Up to 64 channels synchronized playback



Instant playback in live view window



## ▶ **\*\*Solution Diagram\*\***



## ▶ **Specifications**

### Device

Product Type	Software NVR
Maximum Resolution	Support all ACTi cameras in all resolutions
Maximum Number of Video Devices	200
Maximum Number of POS devices	100 (requires additional license)
Maximum Number of Access Control and Network I/O devices	100 (requires additional license)
Maximum Number of Clients	Local: 1, Remote: Unlimited, (recommended up to 5)

### Hardware

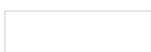
Recommended Graphics Card	GTX 1050 Ti or better
---------------------------	-----------------------

### License

License required	Yes
Free License	1 (1 channels for ACTi and 1 channel for third-party video device)

### Live View

Display Layout Mode	IE client: 1, 3, 4, 5, 6, 8, 9, 10, 12, 16, 18, 24, 25, 35, 36, 48, 49, 64 Lite web client: 1, 3, 4, 5, 6, 8, 9, 10, 12, 16 Workstation: 1, 3, 4, 5, 6, 8, 9, 10, 12, 16, 18, 24, 25, 35, 36, 48, 49, 64, 81, 100, 121 (11x11), 144 (12x12), 169 (13x13), 196 (14x14), 225 (15x15) ** NVR 3 display grid cells can be merged into different shape and size.
---------------------	---



Fisheye Dewarping	Yes
Digital Zoom	Yes, at least 64x digital zoom (Actual digital zoom ratio vary depending mainly on camera resolution, screen resolution and view layout.)
Event Status	Display event status upon alarm or upon connection loss or recovery between server and client or when the allocated disk space is full
Instant Playback	Instant Playback in live view window
Embedded websites in Live View	Display and connect to pre-configured embedded website

## Map

e-Map	Yes
Google Map	Yes
Layout	Area maps with camera icons, small live view windows, hyperlinked
Setup	e-Map image upload, Google maps settings and preset management, camera positioning, vision angle and pointed direction of camera, view positioning, source positioning, extended devices for Point-of-sale (POS), Access Control, Network I/O
PTZ Mode	Mouse PTZ mode to control e-Map video streams

## PTZ

PTZ Control	PTZ Control, Speed Control, 32 preset points
Joystick	USB based joystick supported

## Video

Compression	H.265, H.264, MPEG-4, MJPEG
Hardware Accelerated Decoding	H.264, H.265
Built-in Analytics	Visual Tracking

## Network

Network Protocol & Service	IPv4/v6, TCP, UDP, DHCP Client, HTTP, HTTPS, DNS, NTP, RTP, RTSP, SMTP, FTP, ICMP, ARP, UPnP, LDAP (client), iSCSi
----------------------------	--

## Recording

Scheduled Recording	Yes
Event Recording	Yes
Manual Recording	Yes
Event Speed-up Recording	Yes
Dual Stream Management	Yes
Maximum Recording Throughput	100 channels at 5MP/15fps

## Search & Playback

Playback Control	Continuous forward and backward playback with speeds (1/64, 1/32, 1/16, 1/8, 1/4, 1/2, 1, 2, 4, 8, 16, 32, 64, 128, 256) or frame-by-frame, pause, stop
Synchronized Playback	up to 225 layout grids**

Recording Search	Search video recordings by time, events, channels, bookmarks, notifications and listed as clickable time-based thumbnails for full-size view and snapshot download
Smart Search	Smart search of recorded video by Motion Detection and Tamper
Video Export	RAW, AVI, MP4, EXE, GPU Hardware accelerated video export supported with AVI format
Snapshot Export	BMP, JPEG, PNG
Embedded Media Player	Yes, supports up to 64 channels view

## Event

Video Push	Support Video Push from ACTi Mobile Client devices
Event Trigger	<p>[NVR]: Disk full, Disk not found, Disk is available, S.M.A.R.T. Failure and Normal, Schedule service start and stop, Video Push start and stop, Time Backward, CPU limit exceeded for Server PC, CPU limit exceeded for NVR services, GPU Loading Detection for workstation only, Memory limit exceeded for Server PC and NVR services, Network Send/Receive Limit Exceeded for Server PC.</p> <p>[Video Device]: Video motion detection, Passive IR sensor, External device through digital input, Sound detection, Intelligent event detection, Video Push start and stop, Video loss and recovery, Disk Write Failure and Available.</p> <p>[Extended Device]: Point-of-sale (POS) status, Network I/O status, Access Control status</p>
Event Response	Pop-up window with live video and event confirmation activation, Switch to hotspot window, Switch to customize view, Command a PTZ device to go to a preset point, Play alert sound, Activate external device through digital output, Execute system command to activate other programs, Upload video or snapshot to FTP server, E-mail notification with snapshots, Push notification, Send Snapshot to Line Messenger

## Redundancy Server

Redundancy Service	Yes, N-to-N, N+1 (With limited functions when NVR 3 server acts as Redundancy server)
--------------------	---

## System

Permission control	Unlimited number of users, Active Directory, Customizable permissions for user groups, Account lockout, Automatic logout after idle, Playback password protected, Password validity period, Password Expiration Notification
Watchdog	Support
Client PC Operating System	Windows 7 SP1, Windows 8.1, Windows 10, Windows Server 2008 R2 SP1, Windows Server 2012 R2, Windows Server 2016, Windows Server 2019
Server and Client PC requirements	Please use <a href="https://www.acti.com/pcselector">https://www.acti.com/pcselector</a> For client PC requirements, please check the Performance: Live View section.
Server Operating System	Windows 7 SP1, Windows 8.1, Windows 10, Windows Server 2008 R2 SP1, Windows Server 2012 R2, Windows Server 2016, Windows Server 2019
Mobile Client Program	Mobile device application (ACTi Mobile Client) supports Live View, PTZ Control, Video Push, Event/time based search and playback, Supported device(s) iOS, Android device
Language	Multi-Language

## Integration

Unified Solution	Fully compatible with ACTi cameras, encoders, central management system, TV wall and intelligent video surveillance software
CMS Support	Yes (ACTi CMS 2)

GPS Position	Manual setting
Edge Recording	Automatically restore the lost videos from the memory card of camera to NVR server via ONVIF (Profile G) or proprietary protocol integrations after network connection recovery.
ONVIF Compliant	Yes, Profile S (officially listed as ONVIF conformant at <a href="http://www.onvif.org">www.onvif.org</a> )
Web Browser	IE 11 (Please verify that your computer meets the minimum system requirements for Internet Explorer from Microsoft website.), Lite web client: Microsoft Edge 80.0.361.66 (Normal mode) or newer, Google Chrome 71.0.3578 or newer, Firefox 64.0.2 or newer, Apple Safari 12.0.2 or newer
Third-party Integration	Point of Sale (POS), Access Control, Network I/O, Parking Management Station (PMS), (Various optional integrations requiring additional license)

## Interface

Local Access	USB joystick, keyboard & mouse
--------------	--------------------------------

## General

Remote Access	Workstation, Web Client, Mobile Client
---------------	--

\*\* The actual maximum number of channels may vary depending on the server/client PC performance and network throughput.


## ► Ordering Information

CANS-10000-01-12	This service part number is used for Push Notification Service that can send notifications to mobile devices when specific event happens. This contract continues for 12 months starting at user defined date after payment. Price listed is a monthly fee for single receiving device with maximum of 10000 notifications per month.
CANS-10000-01-24	This service part number is used for Push Notification Service that can send notifications to mobile devices when specific event happens. This contract continues for 24 months starting at user defined date after payment. Price listed is a monthly fee for single receiving device with maximum of 10000 notifications per month.
CANS-10000-01-36	This service part number is used for Push Notification Service that can send notifications to mobile devices when specific event happens. This contract continues for 36 months starting at user defined date after payment. Price listed is a monthly fee for single receiving device with maximum of 10000 notifications per month.
CANS-10000-01-6	This service part number is used for Push Notification Service that can send notifications to mobile devices when specific event happens. This contract continues for 6 months starting at user defined date after payment. Price listed is a monthly fee for single receiving device with maximum of 10000 notifications per month.
LCDP1003	The license is for non-ACTi camera to work on NVR 3 Corporate, GNR series, INR series, MNR-310. The number of add-on channels supported: 1-199 (NVR 3 Corporate, INR-4xx), 1-127 (GNR-410), 1-63 (GNR-3xx, GNR-3000, INR-340), 1-31 (MNR-310), 1-15 (INR-100, MNR-320P, MNR-330P). Price listed is for single channel add-on license. NVR 3 Corporate: The software NVR with support up to 200 cameras or video encoders; Smart Search; Export video; Event management; e-Map; free license for 1-channel ACTi and 1-channel third-party video devices included; Support for integration with POS, access control and extended device by additional software license


LEXD3000	The license is for network I/O or access control extended device to work on NVR 3 Corporate. The number of add-on devices supported: 1-100. Price listed is for single device add-on license. NVR 3 Corporate: The software NVR with support up to 100 cameras or video encoders; Smart Search; Export video; Event management; e-Map; free license for 1-channel ACTi and 1-channel third-party video devices included; Support for integration with POS, access control and extended device by additional software license.
LLIN3000	License for allowing 1 Line messaging token to be added to the NVR. The Line token allows messaging from the NVR to 1 specific group of Line users. The number of users within Line group are not limited. The number of NVR channels is not limited. The application of this solution is to send NVR event messages, such as motion detection alarm, to the Line users (security personnel, supervisors).
LNVR3003	The license is for channel (ACTi video devices) to work on NVR 3 Corporate, GNR series, INR series, MNR-310. The number of add-on channels supported: 1-199 (NVR 3 Corporate), 1-136 (INR-4xx), 1-64 (GNR-410), 1-32 (GNR-3xx, GNR-3000, INR-340), 1-16 (MNR-310). Price listed is for single channel add-on license. NVR 3 Corporate: The software NVR with support up to 200 cameras or video encoders; Smart Search; Export video; Event management; e-Map; free license for 1-channel ACTi and 1-channel third-party video devices included; Support for integration with POS, access control and extended device by additional software license.
LPOS3000	The license is for POS device to work on NVR 3 Corporate. The number of add-on devices supported: 1-100. Price listed is for single device add-on license. NVR 3 Corporate: The software NVR with support up to 100 cameras or video encoders; Smart Search; Export video; Event management; e-Map; free license for 1-channel ACTi and 1-channel third-party video devices included; Support for integration with POS, access control and extended device by additional software license.
LRDS3000	The license is for NVR 3 server to work on NVR 3 server in Redundancy Service mode. The number of add-on servers supported: 1-16. Price listed is for single server add-on license.

## ▶ Related Products

### Access Control System - Access Control Server

ACS-100		200-Channel 1-Bay Mini Standalone Access Control Server with HDMI, DVI and Display port, 4-channel free license included, Supports External Storage (eSATA, iSCSi), 1-Bay (Storage Disks not included), Audio, AC 100-240V
---------	---	--

### Network & Storage Peripherals - Network IO Module

PIOB-0100		Advantech ADAM-6060 6 Digital Input and 6 Digital Output Network I/O Module
-----------	---	---

