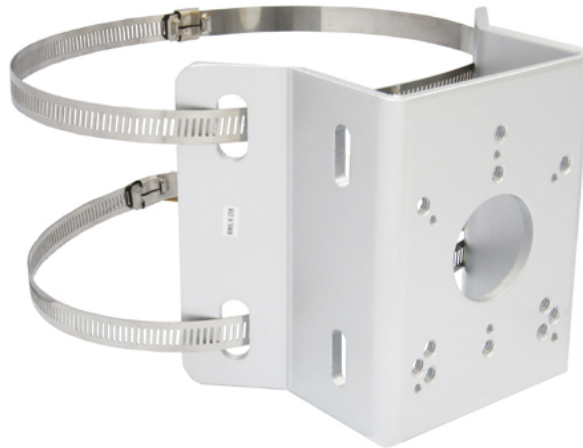


# PIH-CPM

## Corner & Pole Mount



### Features

- Corner / pole mount
- Dimension (mm): 156.6 (W) x 126 (H) x 86.8 (D) mm
- Weight: 440g

PIH-CPM	
Specifications	
Model	PIH-CPM
Color	Sliver
Material/ Construction	Aluminum
Maximum Load	20kg
Schematic Drawing	PIH 520L / PIH CPM / PIH 5004 / 5004L
Dimensions	156.6(W) ×126 (H) × 86.8(D) mm
Weight	0.44kg
Applicable model	IPS4204EA, IPS4208EA, IPS8364N, IPS8368N, IPS8364P, IPS8368P, IRS1304, IRS1308, PSR5024EX30, PSR5024EX20, PSD4624EX30, PSD4624EX20, IPS4304E, IPS4308E, IPS4204E, IPS4208E, IPS4304EA, IPS4308EA

Copyright © Merit LILIN 2017 | All rights reserved  
 Product specifications and availability are subject to change without notice

### Installation diagram

PIHCPM+BTS03W

Pole&Corner

