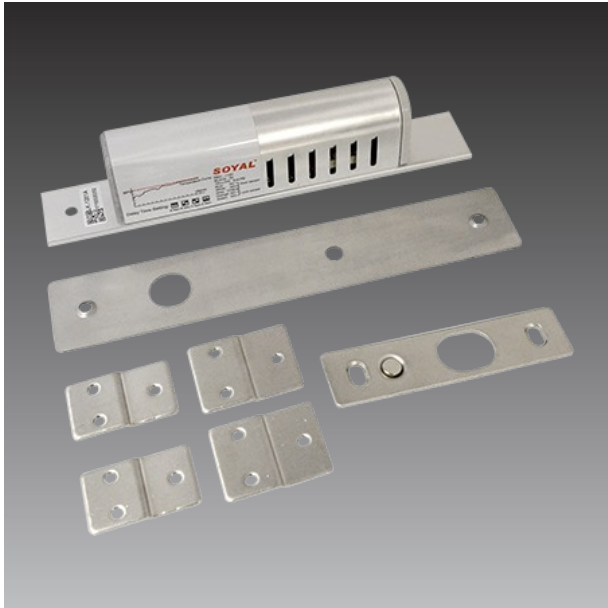


PLOC-0002

Electric Bolt Lock



► Specifications

Device

| | |
|-----------------------|--------------------|
| Original Manufacturer | Soyal |
| Product Type | Lock |
| Original Model | AR-1207A-36 |
| Description | Electric Bolt Lock |
| Locking Mode | Fall Safe |
| Time Delay Option | 0,3,9 seconds |

General

| | |
|-----------------------|-----------------------------|
| Power Source | DC 12-24V |
| Power Consumption | 1A (12V), 0.5A (24V) |
| Weight | 850g (1.874lb) |
| Operating Temperature | -20°C ~ 65°C (-4°F ~ 149°F) |
| Warranty | 1 Year(s) |

▶ Related Products

Power Supply Accessories - Power Adapter

PPBX-0011



Power Adapter AC 100~240V, with universal connectors for all DC12V powered devices