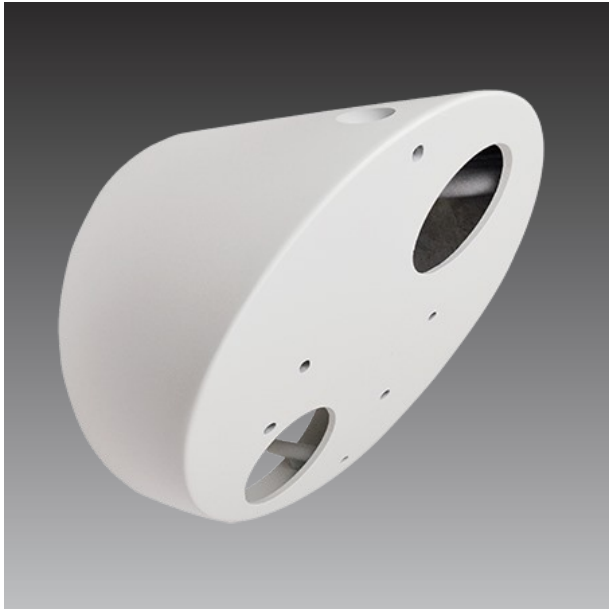


PMAX-0338



35-Degree Tilted Wall Mount for Fisheye and Hemispheric Cameras

► Specifications

Device


Product Type	Camera Mount
Application Environment	Indoor/Outdoor
Description	35-Degree Tilted Wall Mount for Fisheye and Hemispheric Cameras

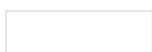
General

Weight	421.5g (0.929lb)
Dimensions	(Ø x H): 150.8mm x 130.23mm (5.9" x 5.1")
Material	Aluminum
Warranty	1 Year(s)
Tilted Angle	35°

► Related Products

Dome - Hemispheric Dome

B511A		12MP Video Analytics Indoor Hemispheric Dome with D/N, Adaptive IR, Extreme WDR, SLLS, Fixed lens, f1.65mm/F2.8 (HOV:198.5° (overview area), 121.1° (high detail area)), H.264, Dewarping, 2D+3D DNR, Built-in Microphone, MicroSDHC/MicroSDXC, PoE/DC12V, DI/DO, Built-in Analytics
-------	---	--



B76A



12MP Video Analytics Outdoor Hemispheric Dome with D/N, Adaptive IR, Extreme WDR, SLLS, Fixed lens, f1.65mm/F2.8 (HOV:198.5° (overview area), 121.1° (high detail area)), H.264, Dewarping, 2D+3D DNR, Built-in Microphone, MicroSDHC/MicroSDXC, PoE/DC12V, IP68, IK10, DI/DO, Built-in Analytics

