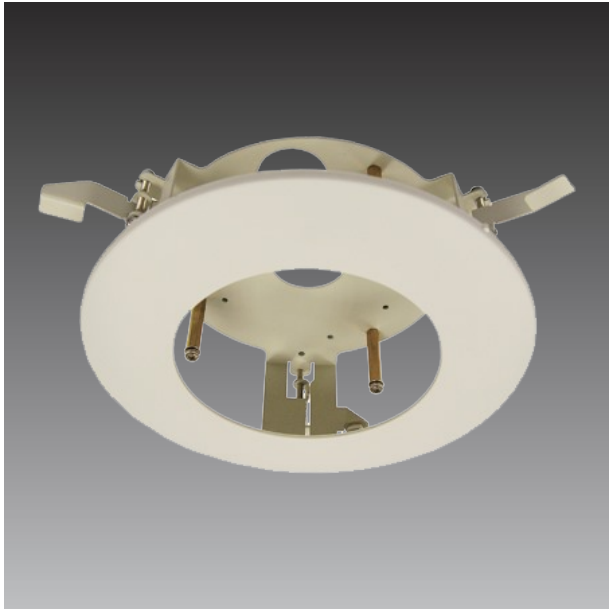


PMAX-1011



Flush Mount Kit (for B511)

► Specifications

Device


Product Type	Camera Mount
Application Environment	Indoor
Description	Flush Mount Kit (for B511)

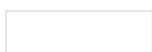
General

Weight	372.5g (0.821lb)
Dimensions	(Ø x H): 197.2mm x 72.1mm (7.77" x 2.84")
Color	Warm Gray
Material	Plastic Iron
Warranty	1 Year(s)

► Related Products

Dome - Hemispheric Dome

B511A	 <p>12MP Video Analytics Indoor Hemispheric Dome with D/N, Adaptive IR, Extreme WDR, SLLS, Fixed lens, f1.65mm/F2.8 (HOV:198.5° (overview area), 121.1° (high detail area)), H.264, Dewarping, 2D+3D DNR, Built-in Microphone, MicroSDHC/MicroSDXC, PoE/DC12V, DI/DO, Built-in Analytics</p>
-------	---



B57



6MP Video Analytics Indoor Hemispheric Dome with D/N, Adaptive IR, Extreme WDR, SLLS, Fixed lens, f1.3mm/F2.6 (HOV:187°), H.264, Dewarping, 2D+3D DNR, Audio, MicroSDHC/MicroSDXC, PoE/DC12V, DI/DO, Built-in Analytics

