

Ordering Information

1-Room Occupancy Monitor Kit

RM-R100-KB1Q

- Monitor fitting rooms, restrooms, etc.
- Increases sales, safety, customer flow, and satisfaction
- Programmable to use PIR sensor (movement), phototransistor (light), or door sensor input (switch) to detect occupancy
- Programmable to flash for reminder function
- Indicator will flash and beep if Help Button is pressed
- Each sensor can transmit to an unlimited number of Indicators
- Staff and customers can monitor room from a distance
- Easy to install – Micro USB or terminal block (5-12 VDC)
- Kit includes Sensor, 1-Room Indicator, micro USB cables and decals



Multiple decals included. See inside for more info.

1-Room Indicator

RM-R100-RB1Q

- Additional 1-Room Indicator
- Programmable to flash after a preset time (3, 5, 10, 15, 20, 30 minutes)
- Indicator will flash and beep if Help Button is pressed
- Multiple decals included
- Micro USB or terminal block (5-12 VDC)



Wall-Mount Help Button

RM-R100-TBQ

- Occupant can signal for help without leaving room
- Wall-mount or for desktop use
- Powered by 9VDC battery (included)
- Includes multiple message plates, or you can print your own custom message



2-Room Indicator

RM-R100-R2Q

- Additional 2-Room Indicator
- Monitor two rooms (requires additional Room Occupancy Monitor)
- Programmable to flash after a preset time (3, 5, 10, 15, 20, 30 minutes)
- Multiple decals included
- Micro USB or terminal block (5-12 VDC)



Indicator Controller

RM-R100-TH2Q

- Allows for easy resetting of 1-Room Indicators and 2-Room Indicators once Wall-Mount Help Button is used
- Includes Belt Clip



END THE WAITING GAME

SECO-LARM's Room Occupancy Monitor

Know at a glance whether a room is in use

The Room Occupancy Monitor (ROM) indicates whether room (like a restroom or fitting room) is occupied or vacant.



Use for any place where you want occupancy notification:



ENFORCER®

Possible Applications:

- | | | |
|----------------------|---------------------|---------------------|
| • Restrooms | • Hallways | • Sound rooms |
| • Portable bathrooms | • Stairways | • Warehouses |
| • Fitting rooms | • Storage rooms | • Loading docks |
| • Conference rooms | • Waiting rooms | • Gas station pumps |
| • Break rooms | • Clinic exam rooms | • Barns and stables |
| • Changing rooms | • X-ray rooms | • Boats |

SECO-LARM®

Manufacturer of **ENFORCER®**

Phone: (949) 261-2999

(800) 662-0800

Email: sales@seco-larm.com

Website: www.seco-larm.com

ENFORCER®

Room Occupancy Monitor

Fitting Room Application



1-Fitting Room Application



Room Occupancy Monitor

RM-R100-KB1Q

Features:

- Monitor fitting rooms, restrooms, etc.
- Increases sales, safety, customer flow, and satisfaction
- Reduces crowding, theft, and embarrassing situations
- Programmable for PIR sensor (movement), phototransistor (light), or door sensor input (magnetic contact switch) to detect occupancy
- Programmable to flash to alert staff to check on occupant after a set amount of time
- Indicator will flash and beep** if Help Button is pressed
- Each sensor can transmit to an unlimited number of indicators
- Staff and customers can monitor room occupancy from a distance
- Service button available
- Easy to install – Micro USB or terminal block (5~12 VDC)
- Kit includes Sensor, 1-Room Indicator, Micro USB cables, and decals
- Additional accessories available. See back for details



Multiple Decals Included:



*Two Room Occupancy Monitor Kits required to recreate Illustration
**Available on RM-R100-KB1Q only

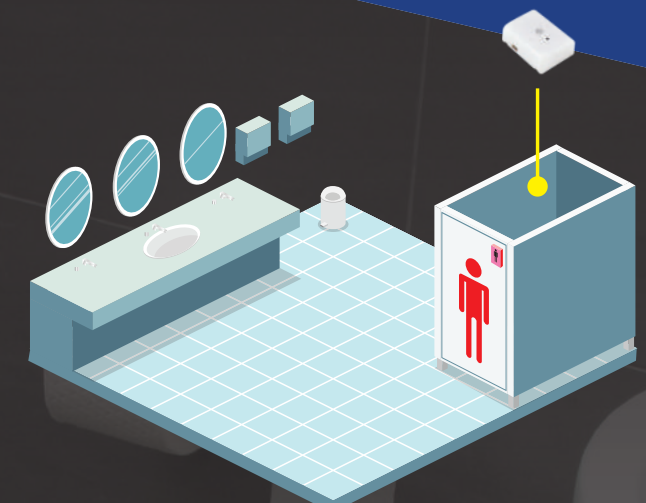
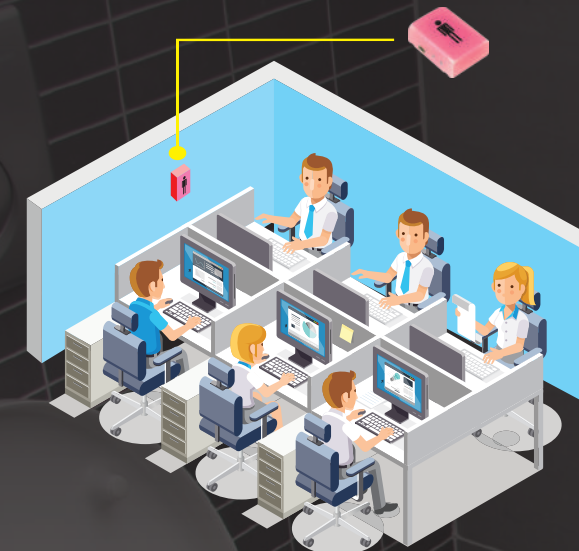
ENFORCER®

Room Occupancy Monitor

Restroom Application

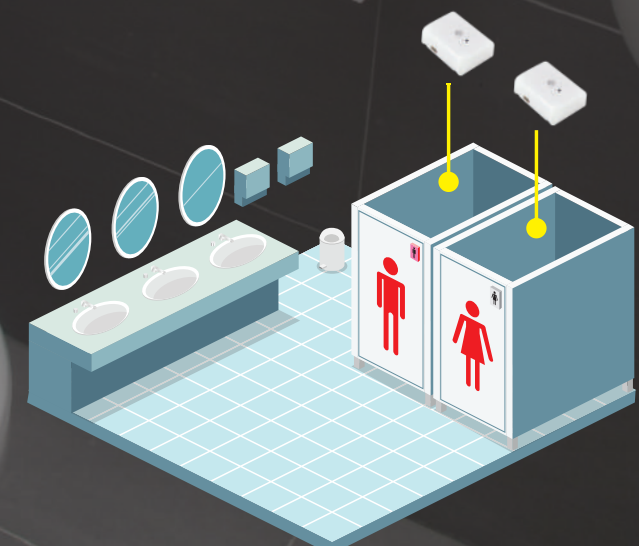


1-Restroom Application*



*Additional One-Room Indicator required to recreate Illustration

2-Restroom Application**



**Two Room Occupancy Monitor Kits and one additional 2-Room Indicator required to recreate Illustration