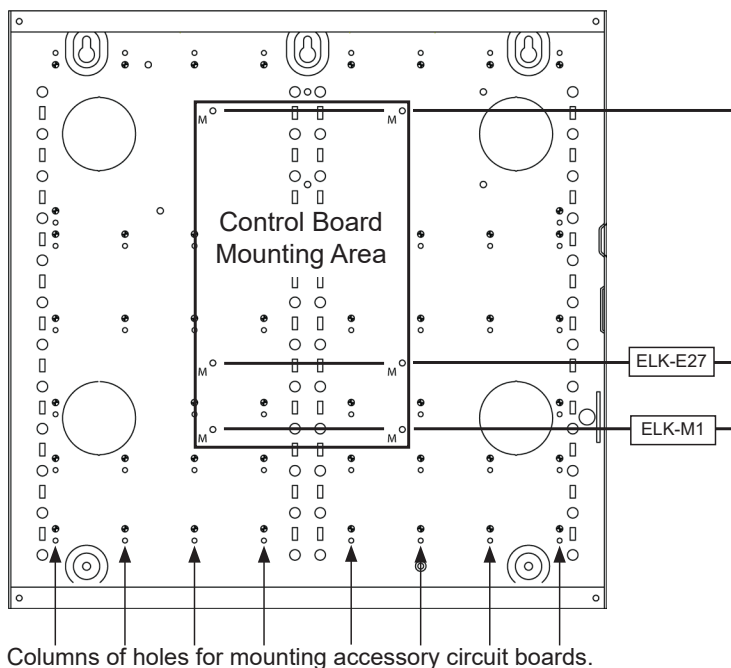


The ELK-SWB14 is a universal structured wiring box featuring a pattern of hole-slot-hole that allows it to accommodate accessories, circuit boards, shelves, brackets, and wiring modules from many different manufacturers. It is designed to be surface mounted but can be flush mounted with the addition of an optional ELK-SWFD14 Flush Mount Door.

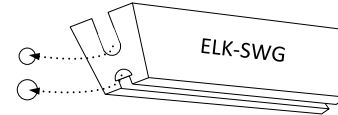
1. Remove any conduit knockouts prior to mounting the box.
2. Position the box against the wall making sure that it is level. Install a #10 screw (not included) in the upper left and right key shaped mounting holes. Make any adjustments to the box level and then install two more screws in the lower 2 mounting holes.
3. Pull wires through one or more of the entry holes. The design of the SWB14 allows wires to be organized along the sides. Plastic wire ties can be used to secure wiring.
4. If desired, a one gang electrical "J" box and duplex outlet may be mounted in the large rectangular knockout of the lower flange. Use #6 Flat Head Self-Tapping Screws (not included).



5. ELK-M1 or ELK-E27 control boards can be mounted as shown in the diagram below. Shoulder screws are provided with the control boards for mounting.

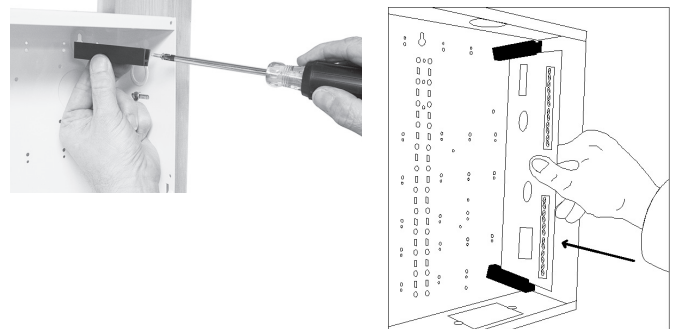


6. For accessory circuit boards there are 8 columns of repeated 2-hole punch patterns, see diagram. One hole in each pattern is slightly larger than the other. These 2-hole patterns are for plastic Circuit Board Glides (p/n ELK-SWG). The small hole is for a 6/32 type "F" mounting screw and the large hole is for a half-moon shape tab on the bottom of each glide.



To mount a circuit board, select a pair of 2-hole patterns in the same vertical column that have their larger holes facing one another. The distance between the center of the large holes determines the size (length) of the circuit board that may be mounted. The available mounting lengths in inches are: 3-1/2", 4", 6", 8", 9-3/8", and 11".

Starting at the top, loosely start a 6/32" mounting screw in the small hole of the first selected 2-hole pattern. Place the slotted edge of a circuit board glide under this screw, making sure that the half-moon tab fits into the larger hole and the grooved edge is facing down. Tighten the screw using a long shafted screwdriver. In the second or lower 2-hole pattern loosely start a 6/32" mounting screw. Attach the second circuit board glide using the same procedures. The grooved edge of this glide should face up.



The circuit board should slide freely into the grooves between the two glides. If the board is loose or too tight, simply loosen one of the mounting screws and adjust the glide to assure a good fit.

### Optional Accessories For SWB14

ELK-SWFD14	Flush Mount Hinged Door
ELK-SWD1	1.75" Grommet Donuts (2)
ELK-SWG	Circuit Board Glides (2)
ELK-SWNS1	Nylon Standoffs for SWP (10)
ELK-SWP3	3" Multipurpose Adapter Plate
ELK-SWP4	4" Multipurpose Adapter Plate
ELK-SWS	Battery Shelf

ELK PRODUCTS, INC.

PO Box 100 • Hildebran, NC 28637 • 828-397-4200 • 828-397-4415 FAX

<http://www.elkproducts.com> • email: [info@elkproducts.com](mailto:info@elkproducts.com)