

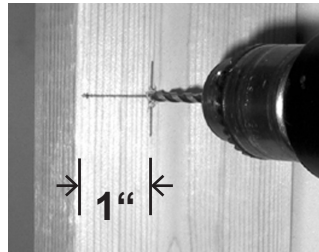
INSTALLATION

The ELK-SWB28 is a universal structured wiring box featuring a pattern of hole-slot-hole that allows it to accommodate accessories, circuit boards, shelves, brackets, and wiring modules from many different manufacturers. It may be flush or surface mounted. Flush mounting is ideal for hollow frame walls with studs on 16" centers. The minimum rough opening is 14.25" wide, 28.25" high, 3.5" deep. The SWB28 can be adjusted for varying wall finish thicknesses and the hinged lid extends beyond the box edges approximately 5/8" which easily conceals uneven cutouts of the wallboard edges.

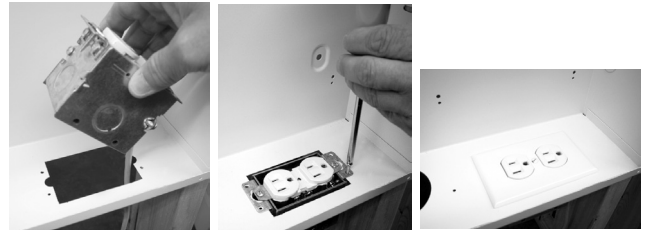
NEW CONSTRUCTION ROUGH-IN

1. Remove any conduit knockouts prior to mounting the box.

2. Pilot drill 1/8" holes on the left and right studs approximately 64" up from the floor and 1" from the front edge. This allows for 1/2" wall finish (sheetrock, etc.) with room for adjustment.



4. If desired, install an electrical outlet in the rectangular knockout on the lower flange. A standard one gang electrical "J" box is mounted using #6 Flat Head Self-Tapping Screws (not included)



3. Position box and install a #10 screw (not included) in the upper left and right horizontal slots using the pilot holes. Adjust front edge of box 1" from the stud face and tighten screws. Install other two screws.

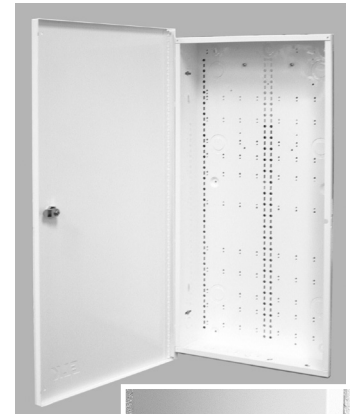
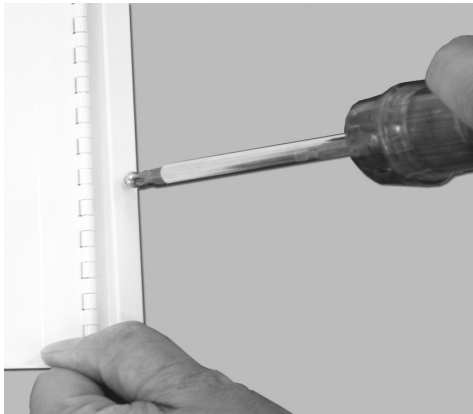
5. Pull wires through one or more of the entry holes. The design of the SWB28 allows wires to be organized along the sides. Plastic wire ties can be used to secure wiring as shown.



INSTALLING THE LID AFTER WALLBOARD INSTALLATION AND/OR PAINTING

6. To install the lid, start two (2) 6-32 x 3/8" type F sheet metal screws into the top and bottom holes of the hinge as shown below. Hold lid against left side of box and align the two 6-32 screw heads with the slotted (key) holes on the box.

Move lid right until the screws engage the slots, then lower into place. BOX MAY BE ADJUSTED FORWARD AND BACK AS NEEDED. Tighten the first 2 screws, then install the remaining 4 screws. Door should open and close freely.



If desired, two (2) #10 sheet metal screws can be installed in the right side of the lid (upper and lower) to make the box more secure against tamper. In addition, the SWB28 provides mounting holes for two tamper switches.



ELK PRODUCTS, INC.

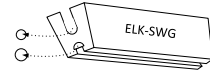
PO Box 100 • Hildebran, NC 28637 • 828-397-4200 • 828-397-4415 FAX

<http://www.elkproducts.com> • email: info@elkproducts.com

INSTALLING CONTROL AND ACCESSORY BOARDS

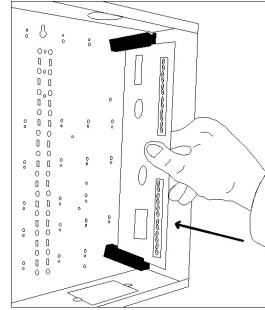
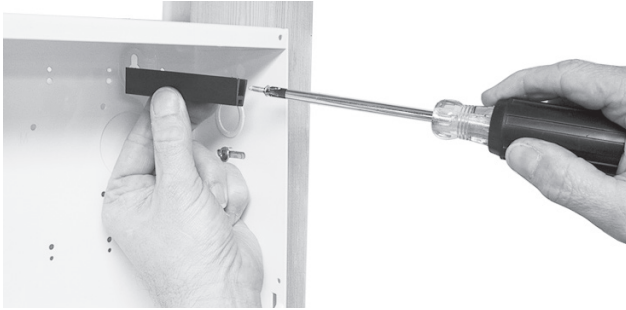
7. There are three locations provided for mounting ELK-M1 or ELK-E27 control boards as shown in the diagram below. Shoulder screws are provided with the control boards for mounting.

8. The box has 8 columns of repeated 2-hole patterns (see diagram). In each 2-hole pattern one hole is slightly larger than the other. These are for plastic Circuit Board Glides (p/n ELK-SWG). The small hole fits a 6/32 type "F" mounting screw and the large hole is for the half-moon locator tab on the bottom of each glide.

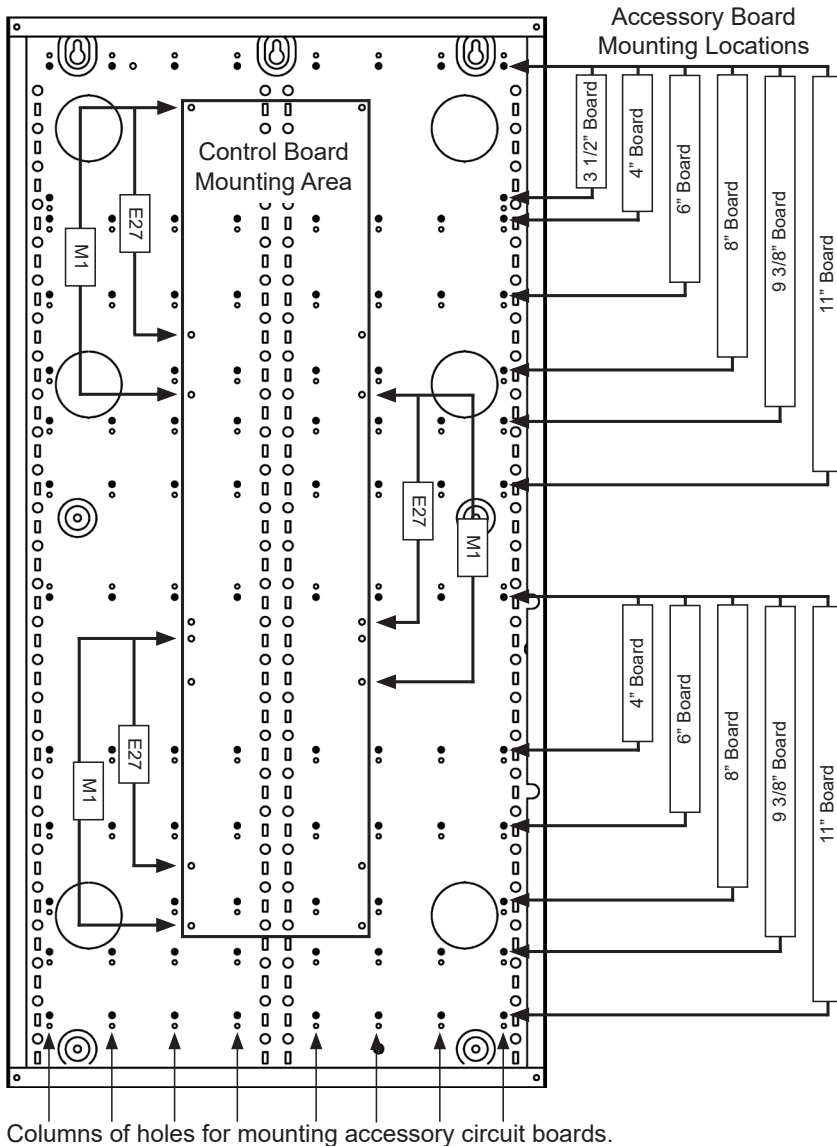


To mount a circuit board, pick a pair of 2-hole patterns in the same vertical column that have their larger holes facing one another. The distance between the large holes determines the size (length) of the circuit board that may be mounted. The available mounting lengths in inches are: 3-1/2", 4", 6", 8", 9-3/8", and 11".

Loosely start a 6/32" screw in the top (small) hole of a 2-hole pattern. Place the slotted edge of a Circuit Board Glide under the screw and make sure the half-moon tab fits into the larger hole. The groove for the board should face down. Tighten screw with a long screwdriver. In the lower 2-hole pattern loosely start a 6/32" screw. Attach the second circuit board glide using the same procedures. The groove for the board should face up.



The circuit board should slide freely into the slide grooves. If not, simply loosen or tighten mounting screws to adjust glide for a secure fit.



Board sizes that fit the ELK-SWB28 utilizing the ELK-SWG vertical glides

Optional Accessories For SWB28	
ELK-SWD1	1.75" Grommet Donuts (2)
ELK-SWG	Circuit Board Glides (2)
ELK-SWNS1	Nylon Standoffs for SWP (10)
ELK-SWP3	3" Multipurpose Adapter Plate
ELK-SWP4	4" Multipurpose Adapter Plate
ELK-SWS	Battery Shelf

Please note: The mounting hole patterns in the top 14" half of the SWB28 are repeated in the bottom 14" with one exception. The 3 1/2" mounting pattern only appears once in the top 14" half (upper right corner).