

**VMAX ip PLUS**  
Complete IP Video Solutions

9ch w/4 PoE	12ch w/8 PoE	16ch w/16 PoE
DW-VP9P	DW-VP12P	DW-VP16P
DW-VP92T4P	DW-VP123T8P	DW-VP163T16P
DW-VP94T4P	DW-VP124T8P	DW-VP164T16P
DW-VP96T4P	DW-VP126T8P	DW-VP166T16P
DW-VP912T4P	DW-VP128T8P	DW-VP168T16P
	DW-VP1212T8P	DW-VP1612T16P
	DW-VP1218T8P	DW-VP1618T16P
	DW-VP1224T8P	DW-VP1624T16P



When logging into the NVR for the first time, you will be prompted to set up a new password. The new password must include a minimum 8 characters with at least four combinations of uppercase and lowercase letters, numbers, and special characters.

**WHAT'S IN THE BOX**

Item	Quantity	Description
Quick setup and download guides	1 set	48V D/C and power cable (* DW-VP12xT8P and DW-VP16xT16P models come with power cable only)
IR remote control (optional. Sold separately)	1	Rubber mounts - 4pcs
USB mouse	1	

**NOTE:** Download all your support materials and tools in one place.

- Go to: <http://www.digital-watchdog.com/resources>
- Search your product by entering the part number in the 'Search by Product' search bar. Results will populate automatically based on the part number you enter.
- Click 'Search'. All supported materials, including manuals and quick start guide (QSGs) will appear in the results.

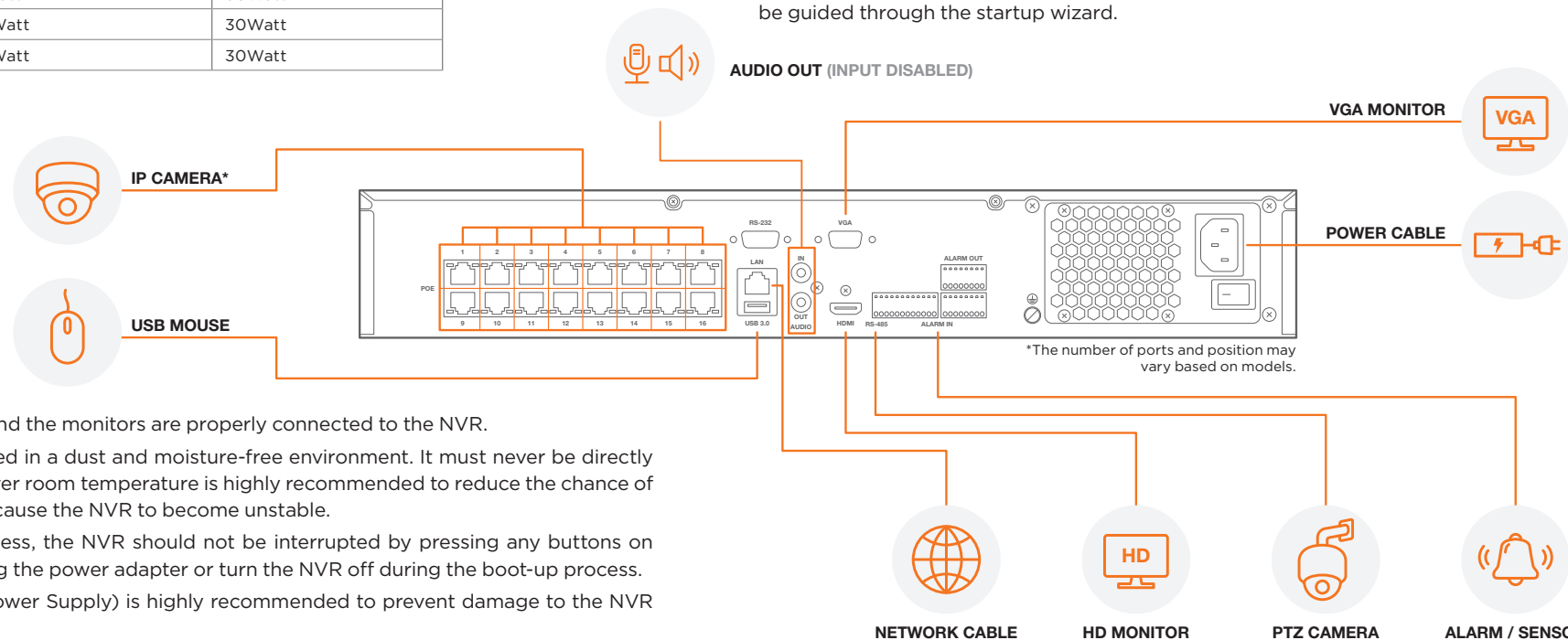


**Attention: This document is intended to serve as a quick reference for the initial setup. It is recommended that the user read the entire instruction manual for complete and proper installation and usage.**

**STEP 1 - CONNECTING THE NVR**

- Mount and install all necessary IP cameras and external devices. Refer to their individual manuals for additional information.
- Place the NVR in its final position. See safety tips for proper installation below.
- Connect all necessary cables and external devices to the NVR. Follow the back panel diagram below.
- Connect the NVR to an appropriate power supply. The NVR will boot up automatically.

Model	Total PoE Power Budget	Max Power per Port
DW-VP9-4P	76Watt	30Watt
DW-VP12-8P	150Watt	30Watt
DW-VP16-16P	150Watt	30Watt



**SAFETY TIPS**

- Make sure the cameras and the monitors are properly connected to the NVR.
- The NVR should be placed in a dust and moisture-free environment. It must never be directly exposed to sunlight. Server room temperature is highly recommended to reduce the chance of overheating, which may cause the NVR to become unstable.
- During the boot-up process, the NVR should not be interrupted by pressing any buttons on the mouse. Do not unplug the power adapter or turn the NVR off during the boot-up process.
- A UPS (Uninterrupted Power Supply) is highly recommended to prevent damage to the NVR during a power outage.

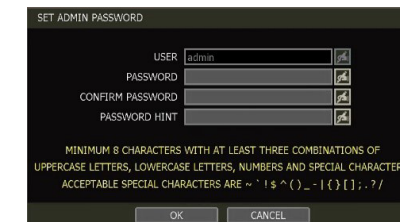
**NOTE:**

- True HD monitor output and VGA output cannot be used at the same time for dual monitoring.
- The audio input port at the NVR is disabled. For audio recording, use audio input supported IP camera.
- To connect additional IP cameras to the NVR, connect a PoE switch to the NVR's network port.

**STEP 2 - POWERING UP THE NVR**

When the NVR boots up, it will be in protective mode and the password setup screen will appear.

- You will be asked to setup a new password. The password must be a minimum of eight (8) characters with at least four (4) combinations of upper-case letters, lower-case letters, numbers, and special characters.
- When the NVR boots up for the first time, you will be guided through the startup wizard.



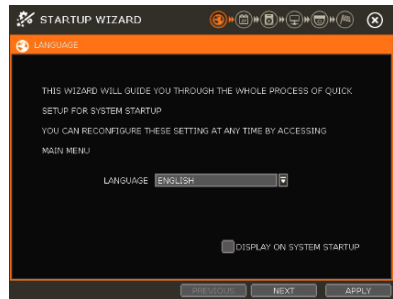
To prevent the NVR from overheating, do not operate it in an area that exceeds the maximum recommended ambient temperature of 104°F (40°C). To prevent airflow restriction, allow at least 3 inches (7.6 cm) of clearance around the ventilation openings.





## STEP 3 – STARTUP WIZARD

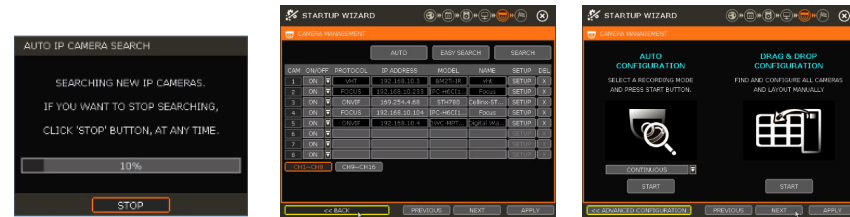
1. Follow the startup wizard's instructions to setup the NVR's basic settings, including language, date/ time, network and configure your cameras. At any time, you can skip steps, go back, or exit the wizard and setup the NVR manually.
2. Language – Select the appropriate language from the drop-down menu options. Press Apply to Save and Next to move to the next step.
3. Set the NVR's date and time, including time zone, Daylight Savings and NTP Time Sync. If needed, set the NVR to sync its time automatically with an external NTP server. Select the server from the TIME SYNC MODE/CYCLE drop-down options and the sync interval. Press Apply to Save and Next to move to the next step.



4. Set the NVR's network settings to match your network's requirements. It is recommended to set the network type to DHCP and let the NVR auto-detect the network's settings by selecting the "IP DETECT" button. Then, change the type to Static. Please contact your Network Administrator for additional information. Press Apply to Save and Next to move to the next step.



5. The Camera Configuration screen allows you to detect cameras in your network and automatically add them to the NVR. Select one of the following options:
  - a. AUTO MANAGEMENT – The system will automatically scan the network and add the first cameras it detects to the NVR. Cameras connected directly to the NVR's PoE Switch will be assigned to channels automatically.
  - b. DRAG & DROP CONFIGURATION – The NVR will scan the network for all supported cameras and display them in a table. Select which cameras to add by dragging the camera's name from the table to the channel square in the display area.



**NOTE:** As part of the cybersecurity settings of the NVR, the VMAX IP Plus will assign passwords automatically to any device added with a blank password. If a camera is added to the NVR for the first time, without having its password set from the IP Finder™, the NVR will automatically assign it a new password. If the camera then needs to be connected to another NVR or system, users will need to reset the camera's settings.

## STEP 4 – MONITOR YOUR SYSTEM

1. NAVIGATION – use the included USB mouse to navigate around the NVR GUI.
  - a. To access the MENU BAR – move the mouse's cursor to the bottom of the display area to show the menu bar. Press the pin icon on the right side to show it permanently.
  - b. To access the QUICK MENU – Right-click anywhere on the screen. The quick menu options will appear, including:
    - Display mode options
    - Digital zoom, virtual PTZ, camera image adjustment and setup
    - Bookmark video
    - Instant playback and search
    - Recording, network and PoE status and analysis
    - Main menu
2. HELP – The HELP button located at the bottom right of setup screens includes basic information and an explanation of the features and settings on that page, for on-the-go information.



## STEP 5 – REMOTE MONITORING

### DDNS Setup

The DDNS address provides your NVR a URL address, easier to remember than an IP address. This is a free feature supported by Digital Watchdog for its customers.

1. Go to the Network setup menu, and select the 'DDNS' tab.
2. Check USE DDNS to enable. (Make sure both the NVR's web port and TCP/IP port are properly setup in your router. If you need assistance, please contact your internet service provider).
3. Select mydwdns.net (default).
4. Enter a name for your NVR and click the CHECK button. If the name is available, the system will display the following message: "THIS NVR NAME CAN BE USED". Click SAVE to save all changes.
5. To use your DDNS, open an Internet Explorer page and enter the DDNS in the address bar: NVRname.dynlink.net:port-number. (Example: http://vmaxipplus.mydwdns.ent:80)

