



VMGB-603 Installation Guide

2019/10/30



ACTi
Connecting Vision

Thank you for purchasing ACTi products. The following documentation covers the installation and configuration of your device.

NOTE: The accuracy of the analytics algorithm may be affected by different environmental factors or inappropriate installation. Please follow the procedures in this guide. ACTi will not be held liable for inaccuracies resulting from the aforesaid causes.

Installation Specifications

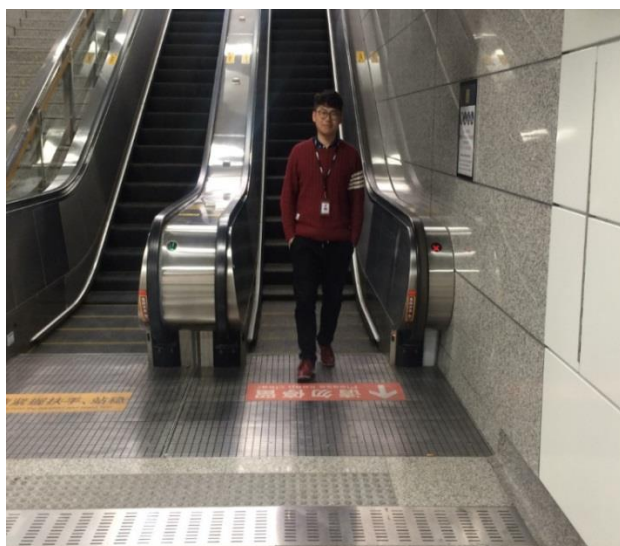
Installation Scenario

The accuracy rate of face recognition greatly involves the installation location, ambient light (such as too dark, too bright) and so on. In order to ensure to get the best results, below are some installation suggestions:

Installation position should be a standard passageway or entrances or exits ways with a particular direction of traffic.

Choose a stable lighting condition with adequate illumination. Light compensation is necessary to ensure the facial features are visible under the condition of insufficient light or backlight.

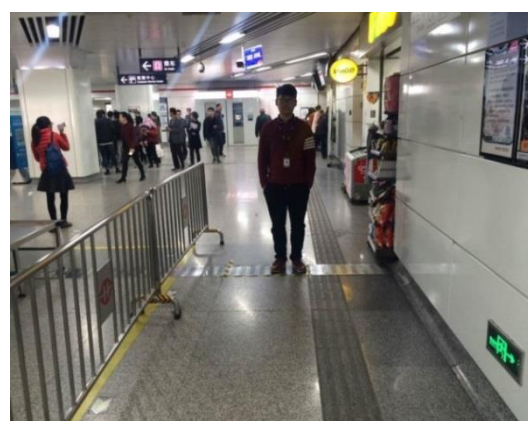
Examples of standard scenarios:



Examples of unsuitable scenarios:

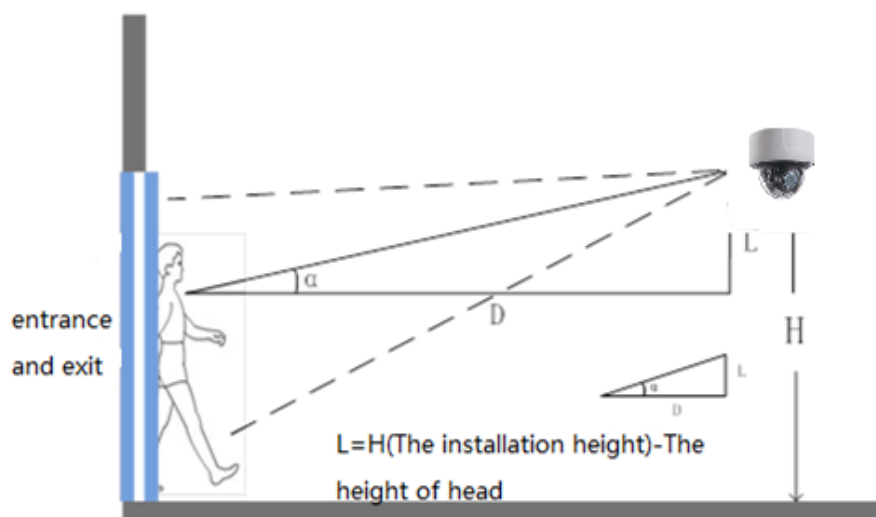


Backlight



Insufficient Light

Installation Height Requirements



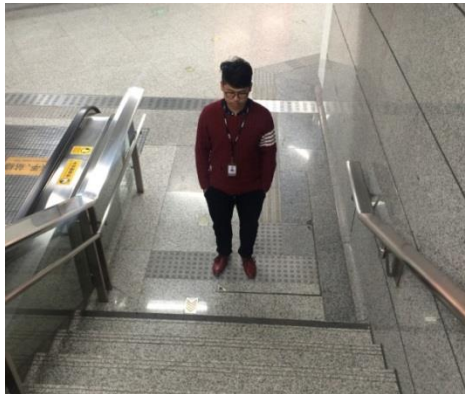
1. The camera should be installed in the front of the passageway where it can capture the face. The horizontal tilt angle of the camera must be less than $< 25^\circ$.
2. The camera installation must be elevated. This is to avoid the situation where a face is obscured by the person in front of him in case they go through the passageway closely one after the other. The vertical elevation angle should be within: $\alpha = 15 \pm 5^\circ$.
3. The covered Pupil Distance (PD) pixels must be greater than 40 pixels to distinguish the face details from the captured image. The practical width of detection area should be less than or equal to 3 meters.

- 4. Make sure that there is no obstruction between the camera lens and the passageway.

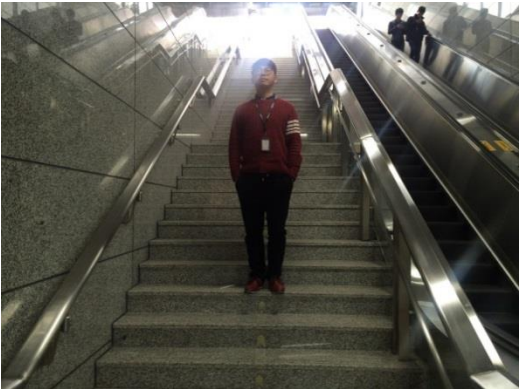
Examples of Standard Scenarios:



Examples of Unsuitable Scenarios:



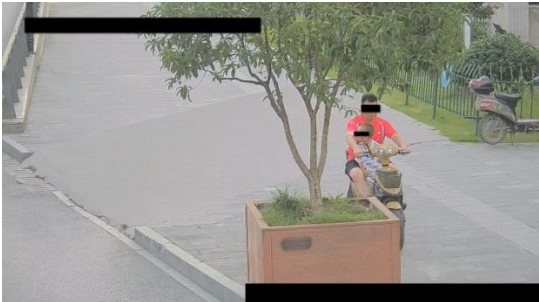
Tilt angle is too large



Elevation Capture



The scenario is too wide



Incline installation, with obstruction



The scenario is too large and the face recognition rate is low



Copyright © 2019, ACTi Corporation All Rights Reserved
7F, No. 1, Alley 20, Lane 407, Sec. 2, Ti-Ding Blvd., Neihu District,
Taipei, Taiwan 114, R.O.C.

TEL : +886-2-2656-2588 FAX : +886-2-2656-2599

Email: sales@acti.com