

**Industrial Wall-mount Managed
Gigabit Ethernet Switch**

WGS-4215-8HP2S

Quick Installation Guide

Table of Contents

1. Package Contents	3
2. Requirements	4
3. Hardware Installation	5
3.1 Wall Mount Installation.....	5
3.2 Wall Hanging Installation.....	6
4. Wiring the Power Inputs.....	8
4.1 Terminal Block Connector Pinout	8
4.2 Wiring Completed in Three Steps.....	9
5. Web Login.....	10
5.1 Starting Web Management	10
5.2 Saving Configuration via the Web	12
6. SSH Login.....	13
6.1 Configuring IP Address.....	13
6.2 Storing the Current Switch Configuration	14
7. Recovering Back to Default Configuration.....	15
8. Customer Support	16




1. Package Contents

Thank you for purchasing PLANET Industrial Wall-mount Managed Gigabit Switch, WGS-4215-8HP2S. The table below shows the model with the number of ports:

Model Name	Copper Port	Fiber Port
WGS-4215-8HP2S	8 x 10/100/1000T	2 x 100/1000X

In the following sections, unless specified, the term **“Wall-mount Managed Switch”** mentioned in this quick installation guide refers to the above model.

Open the box of the Wall-mount Managed Switch and carefully unpack it. The box should contain the following items:

The Wall-mount Managed Switch x 1	Quick Installation Guide x 1 pc	
		
Wall-mounted Kit x 1 set	RJ45 Dust Cap x 8	SFP Dust Cap x 2
		

If any item is found missing or damaged, please contact your local reseller for replacement.

2. Requirements

- A flat-blade screwdriver
- **Workstations** running Windows XP/2003/Vista/7/8/2008/10, MAC OS X or later, Linux, UNIX, or other platforms are compatible with TCP/IP protocols.
- Workstations are installed with **Ethernet NIC** (Network Interface Card)
- **Ethernet Port Connection**
 - Network cables -- Use network (UTP) cables with RJ45 connectors.
 - The workstation is installed with **Web browser**.
 - The above Workstations have been installed with SSH and telnet client software, such as Tera Term or PuTTY.



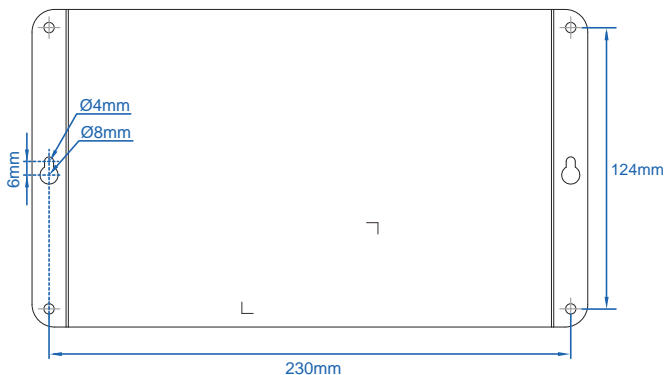
It is recommended to use Internet Explorer 8.0 or above to access the Wall-mount Managed Switch. If the Web interface of the Wall-mount Managed Switch is not accessible, please turn off the anti-virus software or firewall and then try it again.

3. Hardware Installation

3.1 Wall Mount Installation

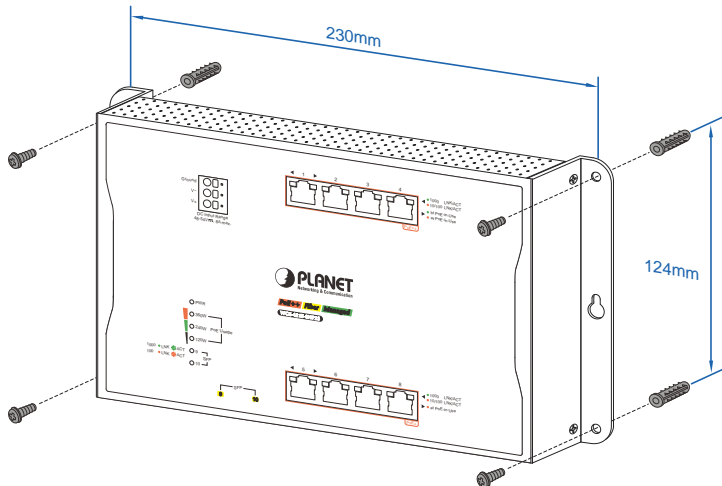
To install the Wall-mount Managed Switch on the wall, simply follow the following steps:

Step 1: Drill 4 holes with **8mm** diameter on the wall. The horizontal and vertical distances between the 2 holes are **230mm** and **124mm**, respectively.



Step 2: Hammer the four anchors into the four holes.

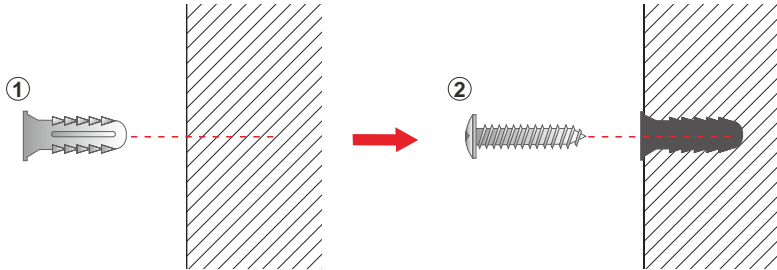
Step 3: Then the four given screws are screwed into the anchors to finish the wall-mount installation, as shown below.



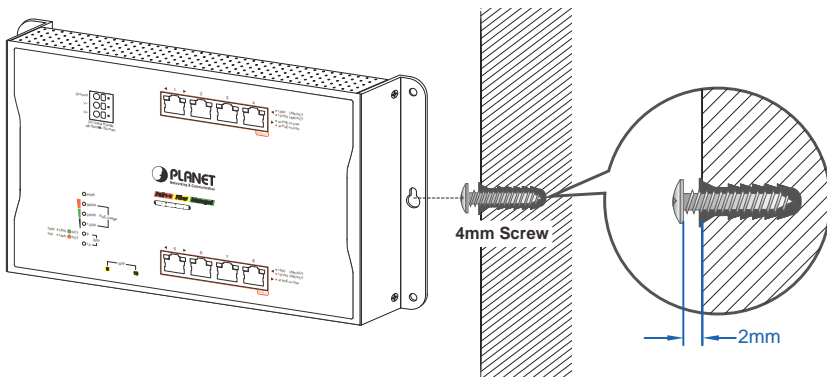
3.2 Wall Hanging Installation

To hang the Wall-mount Managed Switch on the wall, simply follow the following steps:

Step 1: Drill 2 holes (one hole on each side) with 8mm diameter on the wall; the distance between the 2 holes is 230 mm and the line through them must be horizontal.



Step 2: Place two anchors inside the hole by hammering them. Then screw the two screws leaving a space of 2mm apart as shown in the circled diagram below.

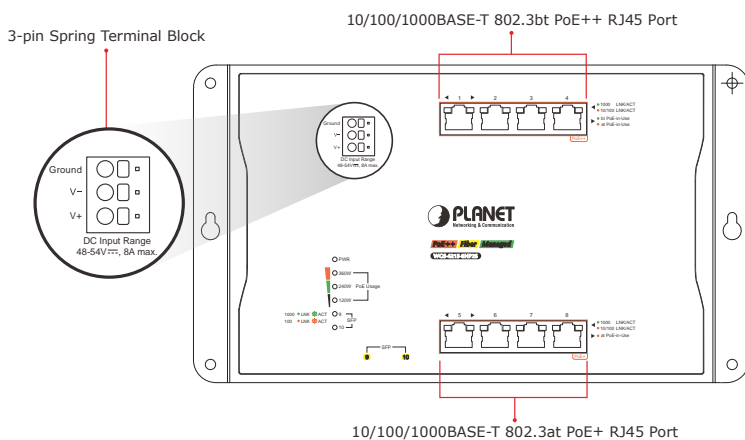


4. Wiring the Power Inputs

The Wall-mount Managed Switch features a strong and convenient power input system incorporated into customer's automation network to enhance system uptime.

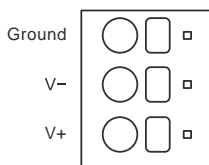
Model	Power Input Range	PWR
WGS-4215-8HP2S		DC 48-54V, 8A max

Note: Maximum power requirements also rely on the real site application.



4.1 Terminal Block Connector Pinout

The Front Panel of the Wall-mount Managed Switch consists of one **terminal block connector** within 3 contacts. Please follow the steps below to insert the power wire.

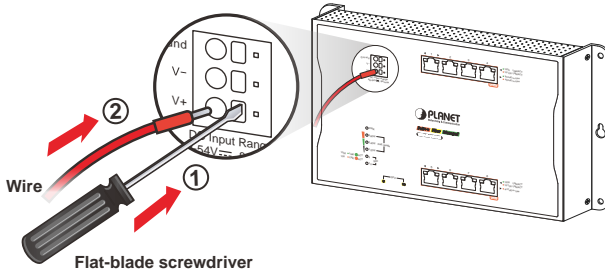


Insert positive/negative DC power wires into Contacts V+ and V- for Power.

4.2 Wiring Completed in Three Steps

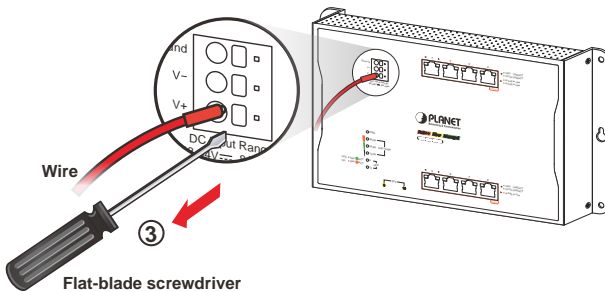
Step 1: Press the flat-blade screwdriver diagonally into the release hole.

Step 2: Leave the flat-blade screwdriver pressed into the release hole and insert the wire into the terminal hole. Insert the wire until the stripped portion is no longer visible to prevent shorting.



Step 3: Remove the flat-blade screwdriver from the release hole.

After you connect the wires, pull gently on the wire to make sure that it will not come off and the wire is securely fastened to the terminal block.



Note

1. The wire gauge should be in the range from 12 to 16 AWG.
2. The device must be grounded.

5. Web Login

5.1 Starting Web Management

The following shows how to start up the **Web Management** of the Wall-mount Managed Switch. Note the Wall-mount Managed Switch is configured through an Ethernet connection. Please make sure the manager PC must be set to the same **IP subnet address**.

For example, the default IP address of the Wall-mount Managed Switch is **192.168.0.100**, then the manager PC should be set to **192.168.0.x** (where x is a number between 1 and 254, except 100) and the default subnet mask is 255.255.255.0.

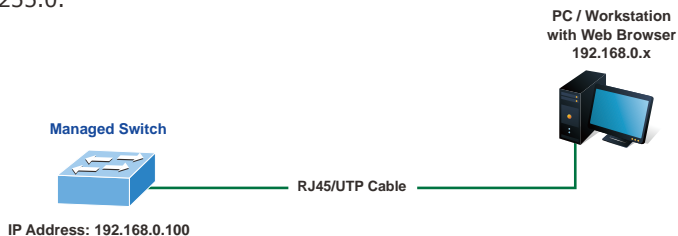


Figure 5-1: IP Management Diagram

Logging in to the Wall-mount Managed Switch

1. Use Internet Explorer 8.0 or above Web browser and enter IP address **<https://192.168.0.100>** to access the Web interface.
2. When the following dialog box appears, please enter **"admin"** in both the default user name and password fields. The login screen in Figure 5-2 appears.

Default IP Address: **192.168.0.100**
Default Username: **admin**
Default Password: **admin**



Figure 5-2: Web Login Screen

3. After entering the password, the main screen appears as Figure 5-3 shows.



Figure 5-3: Web Main Screen of Wall-mount Managed Switch

The Switch Menu on the top of the Web page lets you access all the commands and statistics the Wall-mount Managed Switch provides. The Switch Menu always contains one or more buttons, such as "System", "Switching", "Routing", "QoS", "Security", "Ring" and "Maintenance".



Figure 5-4: Switch Menu



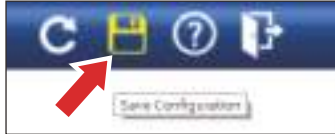
Note

If you are not familiar with Switch functions or the related parameter, press **"Help icon"** anytime on the Web page to get the help description.

5.2 Saving Configuration via the Web

To save all applied changes and set the current configuration as a startup configuration, the startup-configuration file will be loaded automatically across a system reboot.

1. Click the **Save** icon on the top Switch Menu bar.



2. Press the "**Save Configuration**" button.



3. Or the other way to save the setting is to Click **Maintenance, Save Startup Config**.



6. SSH Login

The Wall-mount Managed Switch also supports SSHv2 for secure remote management. The switch asks for user name and password for remote login when using telnet; please use “admin” for both username and password.

Default IP address: **192.168.0.100**

Username: **admin**

Password: **admin**



Figure 6-1: Wall-mount Managed Switch Telnet Login Screen

The user can now enter commands to manage the Wall-mount Managed Switch. For a detailed description of the commands, please refer to the following chapters.



Note

1. For security reason, **please change and memorize the new password after this first setup.**
2. Only accept command in lowercase letter under console interface.

6.1 Configuring IP Address

The Wall-mount Managed Switch is shipped with default IP address shown below:

IP Address: **192.168.0.100**

Subnet Mask: **255.255.255.0**

To check the current IP address or modify a new IP address for the Switch, please use the procedure as follows:

■ Display of the Current IP Address

1. At the “#” prompt, enter “show ip”.
2. The screen displays the current IP address shown in Figure 6-2.

```
WGS-4215-8HP2S# show ip
IP Address: 192.168.0.100
Subnet Netmask: 255.255.255.0
Default Gateway: 192.168.0.254
WGS-4215-8HP2S#
```

Figure 6-2: IP Information Screen

■ Configuration of the IP Address

3. At the “#” prompt, enter the following command and press **<Enter>** as shown in Figure 6-3.

```
WGS-4215-8HP2S# configure  
WGS-4215-8HP2S (config)# ip address 192.168.1.100 mask 255.255.255.0
```

The previous command would apply the following settings for the Wall-mount Managed Switch.

```
IP Address: 192.168.1.100  
Subnet Mask: 255.255.255.0
```

```
WGS-4215-8HP2S# configure  
WGS-4215-8HP2S(config)# ip address 192.168.1.100 mask 255.255.255.0
```

Figure 6-3: Configuring IP Address Screen

4. Repeat step 1 to check if the IP address has changed.

6.2 Storing the Current Switch Configuration

At the “#” prompt, enter the following command and press **<Enter>**.

```
copy running-config startup-config
```

```
WGS-4215-8HP2S# copy running-config startup-config  
Success  
WGS-4215-8HP2S#
```

Figure 6-4: Saving Current Configuration Command Screen

If the IP is successfully configured, the Wall-mount Managed Switch will apply the new IP address setting immediately. You can access the Web interface of the Wall-mount Managed Switch through the new IP address.



Note

If you are not familiar with the console command line interface (CLI) or the related parameter, enter “**help**” anytime in CLI to get the help description.

7. Recovering Back to Default Configuration

■ IP Address has been changed or admin password has been forgotten –

To reset the IP address to the default IP address “**192.168.0.100**” or reset the login password to default value, press the **reset button** on the front panel for about **5 seconds**. After the device is rebooted, you can log in the Web interface management within the same subnet of 192.168.0.xx.

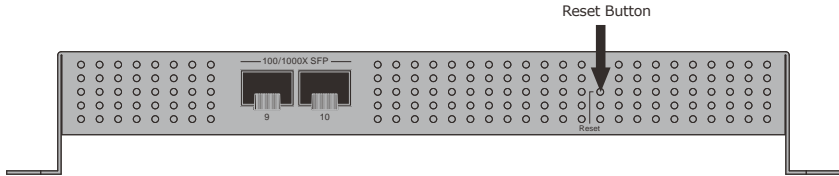


Figure 7-1: WGS-4215-8HP2S Reset Button

8. Customer Support

Thank you for purchasing PLANET products. You can browse our online FAQ resource and User's Manual on PLANET Web site first to check if it could solve your issue. If you need more support information, please contact PLANET switch support team.

PLANET online FAQs:

<https://www.planet.com.tw/en/support/faq>

Switch support team mail address:

support@planet.com.tw

WGS-4215-8HP2S User's Manual:

<https://www.planet.com.tw/en/support/downloads?&method=keyword&keyword=WGS-4215-8HP2S&view=3#list>



Copyright © PLANET Technology Corp. 2021

Contents are subject to revision without prior notice.

PLANET is a registered trademark of PLANET Technology Corp.

All other trademarks belong to their respective owners.