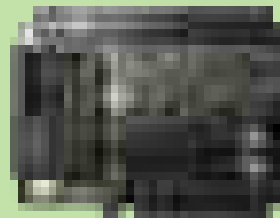




C3-400-PRO

# C3 PRO-SERIES

## IP-Based Access Control Panel



C3-200-PRO



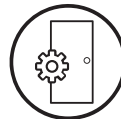
C3-100-PRO

C3 Pro Series is a next-generation series of panels having advanced access control features including anti-passback, first-card opening, multi-card opening, duress password entry, embedded card verification and supports real-time Push protocol.



### Choice of Readers:

Full range of card readers supported. ZKAccess KR-Series slave readers are stylish and waterproof. C3 Pro supports any wiegand-output reader, including HID Prox, iClass, and XceedID MultiTechnology.



### Door Control and More:

Along with relay contacts for controlling door locks, easily programmable auxiliary relays can be used for additional control and interface to lights, alarms, annunciators, intrusion detection panels, or even extra locking devices or gate controllers.



### Communication:

C3 Pro panels install easily on your network and support both TCP/IP and RS-485 communication. Auto-discovery tool allows setting and modification of network parameters directly and easily.



### Options:

C3 Pro panels come in three sizes to suit project needs and reduce the cost of unused capacity. 1-door, 2-door, and 4-door models can be mixed and matched in an optimized system architecture.



### Lowest Total Cost of Ownership:

C3 Pro panel firmware can be upgraded in the field. New controller features can be loaded without any advanced tools, extending and expanding the value of your investment.



### Built-In Advanced Access Control:

Anti-Pass-back, First-Card Opening, Multi Card Opening, Duress Password Entry, and Auxiliary Input/Output Linkages are built into the firmware.



### Capacity:

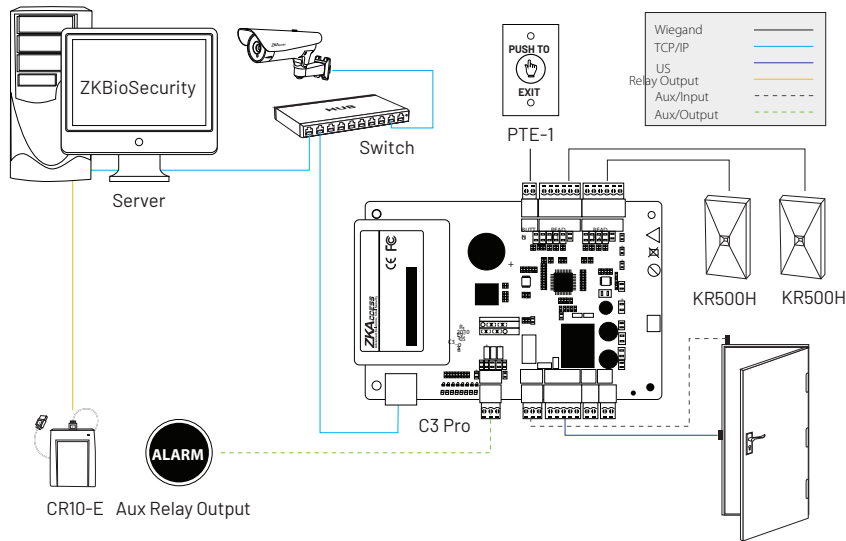
30,000 card holders and 100,000 events. Panel is backed up in real-time in on board optional SD card. Data is preserved if power is lost. Panel continues to operate even if network connection is interrupted.



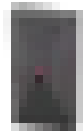
### For Software Developers:

Free SDK is available for integrators and OEM's to integrate the C3 Pro panels with their existing security or personnel management applications. Upon request, ZKAccess can also customize C3 Pro firmware to meet any custom requirements.

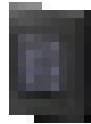
# TYPICAL INSTALLATION:



# OPTIONAL ACCESSORIES SPECIFICATION:



KR500H



KR502H



KR503H



PTE-1



Prox Card



Proxy Key Fob

	C3-100-PRO	C3-200-PRO	C3-400-PRO
<b>Software Compatibility</b>	ZKBioSecurity Software, only 1 Door	ZKBioSecurity Software, only 2 Door	ZKBioSecurity Software, only 4 Door
<b>Number of Doors Controlled</b>	4 (Wiegand readers)	8 (Wiegand readers)	12 (Wiegand readers)
<b>Number of Readers</b>	26-bit Wiegand, others upon request	26-bit Wiegand, others upon request	26-bit Wiegand, others upon request
<b>Types of Readers</b>	2 ( 1 for Exit button, 1 for Door status)	6 ( 2 for Exit button, 2 for Door status, 2 for Aux)	12 ( 4 for Exit button, 4 for Door status, 4 for Aux)
<b>Number of Inputs</b>	2 ( 1-from C Relay for Lock and 1-form C Relay for Aux Output)	4 ( 2-from C Relay for Lock and 2-form C Relay for Aux Output)	8 ( 4-from C Relay for Lock and 2-form C Relay for Aux Output)
<b>Number of Outputs</b>	30,000	30,000	30,000
<b>Card Holders Capacity</b>	100,000	100,000	100,000
<b>Log Events Capacity</b>	9 lbs. (4 kg)	10 lbs. (4.5 kg)	10 lbs. (4.5 kg)
<b>Weight</b>	TCP/IP	TCP/IP	TCP/IP
<b>Communication</b>	Powder Coated Aluminum Wall Mount	Powder Coated Aluminum Wall Mount	Powder Coated Aluminum Wall Mount
<b>Enclosure</b>	12V DC, 1.5A	12V DC, 1.5A	12V DC, 1.5A
<b>Mounting</b>	15 × 3.15 × 11 inches	15 × 3.15 × 11 inches	15 × 3.15 × 11 inches
<b>Recommended Power</b>	6.3 × 4.17 inches	6.3 × 4.17 inches	6.3 × 4.17 inches
<b>Dimensions (Bundle)</b>			
<b>Dimensions ( Board)</b>			

## ZKTeco USA

1600 Union Hill Rd., Alpharetta GA 30005

Phone: (862) 505 - 2101 • Fax: (862) 204 - 5906 • sales@zktecousa.com • www.zktecousa.com

© Copyright 2019. ZKTeco Inc. ZKTeco Logo and ZKTeco USA Logo have registered trademarks of ZKTeco or a related company.

All other product and company names mentioned are used for identification purposes only and may be trademarks of their respective owners.