



Software Configuration User Guide:

VIVOTEK NVR Implementation with Control4

Supported Models:

ND8212W running firmware supporting Control4 implementation.

Prerequisites:

1. VIVOTEK's NVR is connected to a Control4 enabled TV via an HDMI cable.
2. VIVOTEK's NVR is configured with a static IP address or it always receives the same IP address from the DHCP server via a MAC based reservation.
3. A User name and Password should have been configured on the NVR. You have the default User Name: admin, and password for access to the NVR.
4. Ensure VIVOTEK's NVR is powered on and connected to the network.

Contact Information

VIVOTEK INC.

- [6F, No.192, Lien-Cheng Rd., Chung-Ho, New Taipei City 23553, Taiwan](#)
- [+886 2 8245-5282](#)
- [+886 2 8245-5532](#)
- [Sales Inquiry](#)

TECHNICAL SUPPORT

- [6F, No.192, Lien-Cheng Rd., Chung-Ho, New Taipei City 23553, Taiwan](#)
- [+886 2 8245-5282](#)
- [+886 2 8245-5532](#)
- [Technical Support](#)

VIVOTEK USA (for USA and Canada)

- [2050 Ringwood Avenue, San Jose, CA 95131, USA](#)
- [+1-408-773-8686](#)
- [+1-408-773-8298](#)
- [Sales Inquiry](#)

VIVOTEK Europe (for general inquiry, logistic and inventory info only)

- [Randstad 22-133, 1316BW Almere, The Netherlands](#)
- [+31\(0\)36-5298-434](#)
- [Sales Inquiry](#)

VIVOTEK Japan

- [9th floor Shiba Park Building.A 2-4-1 Shibakoen, Minato-ku, Tokyo 105-0011, Japan](#)
- [Sales Inquiry](#)

VIVOTEK India

- [602, Best Sky Tower, Plot No. F-5, Netaji Subhash Place, Pitam Pura, Delhi - 110 034, India](#)
- [+91-45137465](#)
- [Sales Inquiry](#)

VIVOTEK Middle East FZCO

- [Room 1802, P.O.Box: 61053 Jafza ONE, Jebel Ali free zone, Dubai, United Arab Emirates](#)
- [+971-4-8815333](#)
- [+971-4-8815205](#)
- [Sales Inquiry](#)

VIVOTEK Mexico

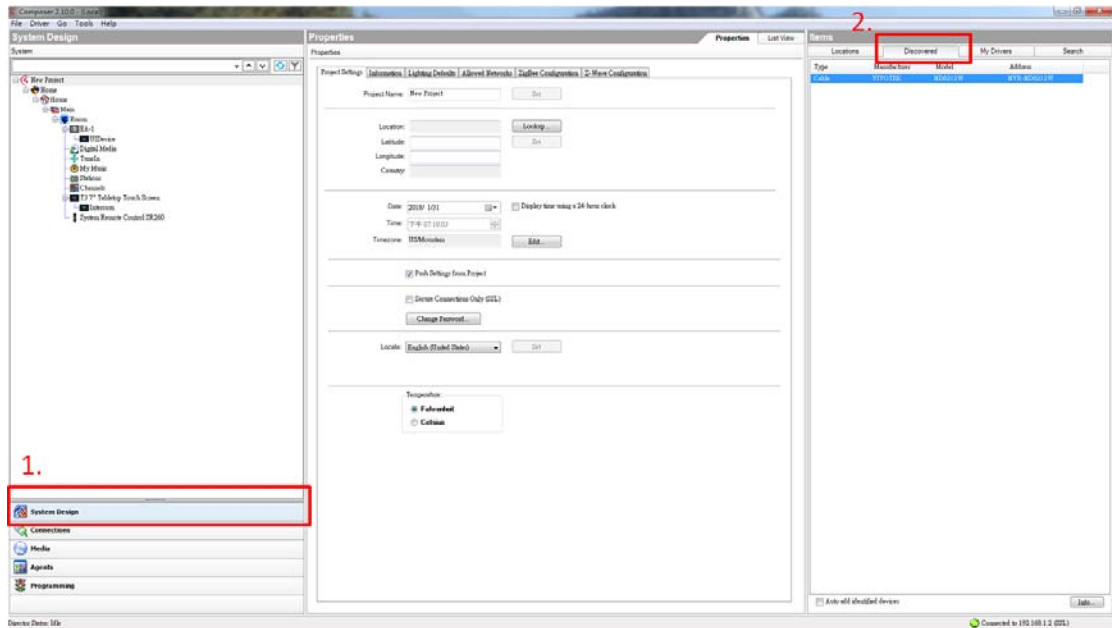
- [Ejército Nacional N, 418 Piso 7, Oficina 711 Col. Polanco V Sección, Delegación Miguel Hidalgo México, D.F.](#)
- [+ 52 55 1101 1793](#)
- [Sales Inquiry](#)

This document describes the following implementation topics:

1. Driver installation
2. Video viewing and playback control

Driver Installation:

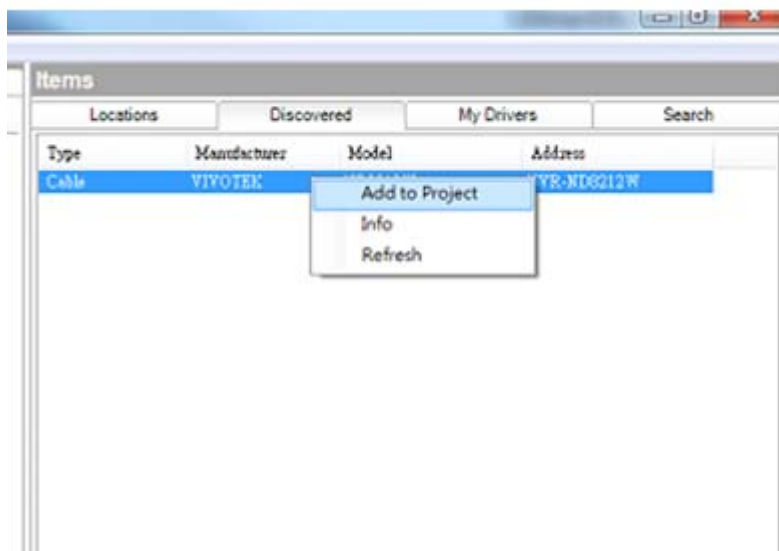
1. Connect the NVR to a Control4 enabled TV via an HDMI cable.
2. Configure the VIVOTEK NVR to a static IP address or ensure it always receives the same IP address from the DHCP server via a MAC based reservation.
3. A User name and Password should have been configured on the NVR. Follow the documentation that came with the NVR to complete the initial configuration.
4. You must have a PC or laptop running the Control4 Composer utility in the same subnet of your Control4 installation site.
5. Ensure VIVOTEK's NVR is powered on and connected to the network.
6. The NVR should be discovered by the Composer utility using SSDP protocol if you added the driver via discovery you do not need to set up the IP address.
7. Open the Control4 Composer utility.



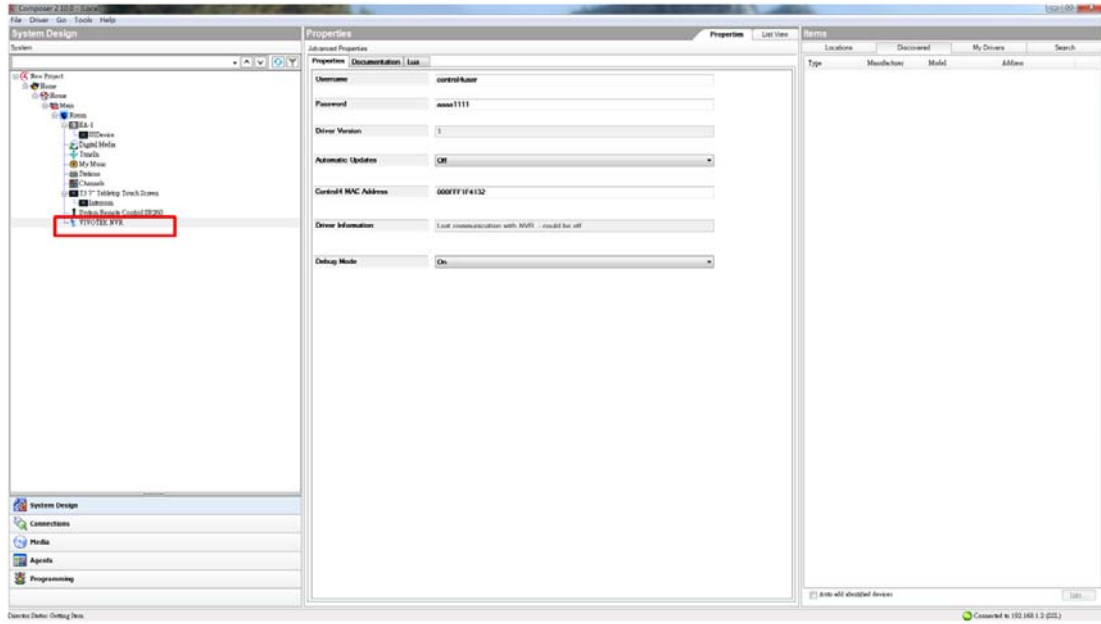
8. Select **System Design**.

9. Click on the **Discovered** tab. Double-click on the discovered NVR to begin driver installation.

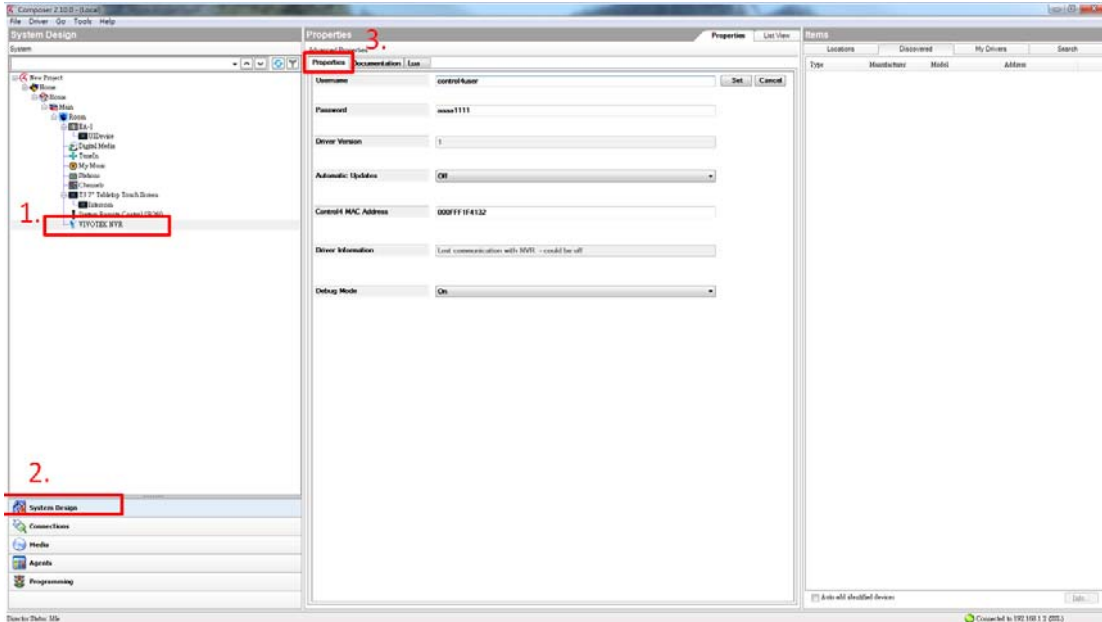
You can also right-click on the entry and click **Add to Project**.



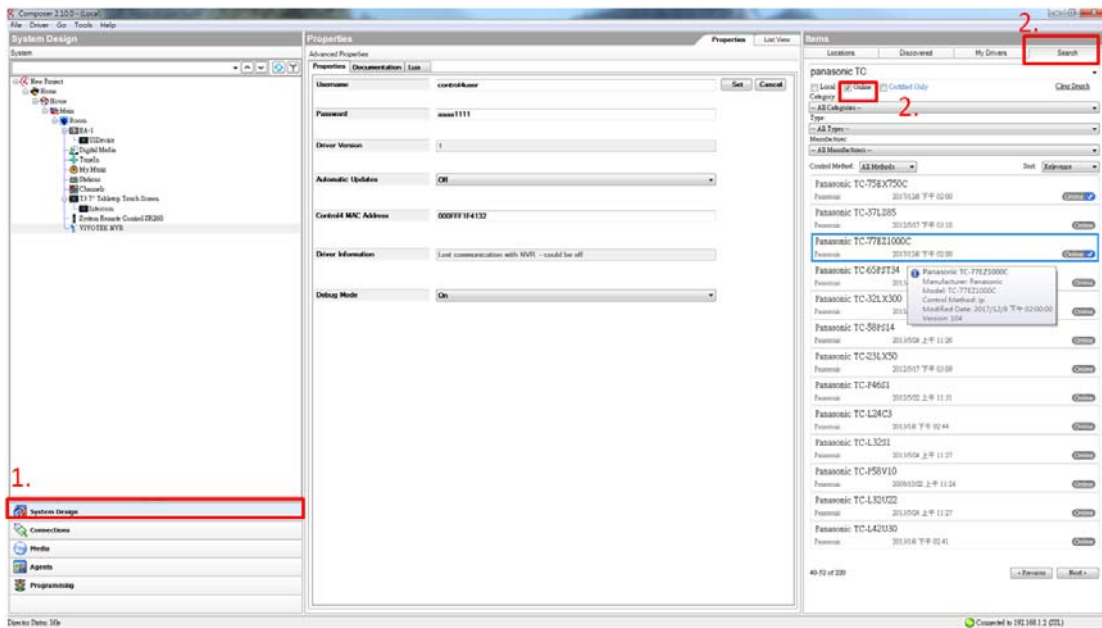
10. The VIVOTEK NVR should be listed on the device tree.



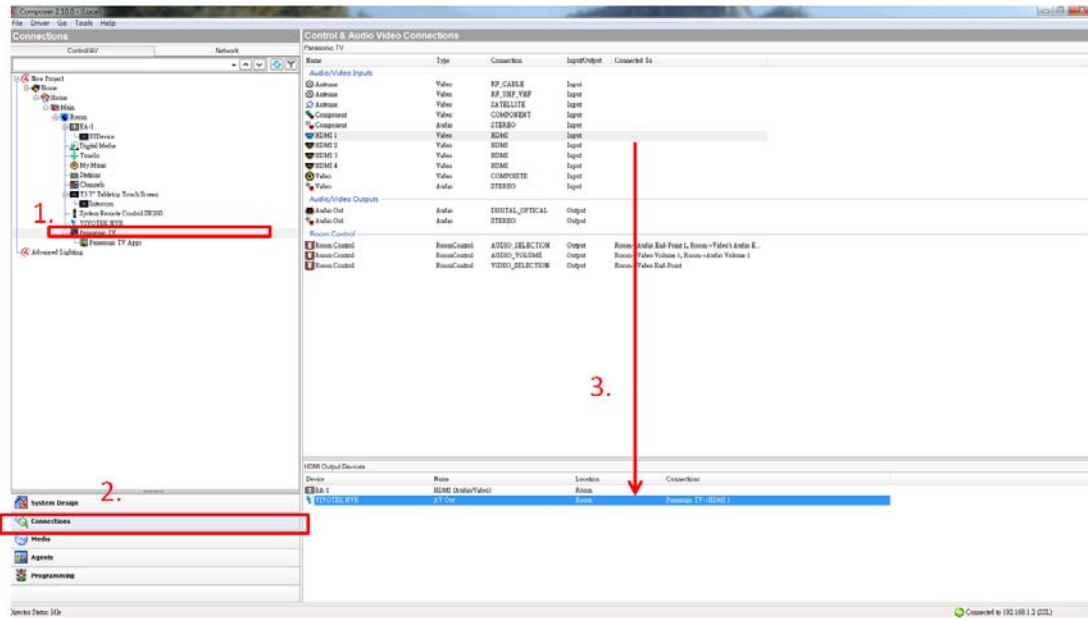
11. Click to select the VIVOTEK NVR from the device tree.
12. Click on **System Design**.
13. Click on the **Properties** tab, and enter the Username and Password you previously configured for access to the NVR.



14. Click on the **Search** tab on the Items panel. The available TV drivers should be listed. Click to select an appropriate driver for your device. Install the driver.



15. Select the TV driver from the device tree. Click on **Connections** to open the Connections window. Click and drag an HDMI port to the HDMI Output device at below (VIVOTEK NVR).



Live View and Playback:

1. Tap **Watch** to enter the Watch page. The Navigator on a touchscreen is used as an example.



You can also press the **Watch** key on your remote controller.



2. Tap **VIVOTEK NVR** to enter the NVR's Liveview page.



3. By default, once you enter the NVR's **Liveview**, press the **CH+** or **CH-** buttons to select channels. Operation will start from CH1 when you use the CH+/- buttons. Pressing A 3x3 layout is used here as an example.



To select a different channel, use the arrow keys or use the **CH+** or **CH-** buttons.

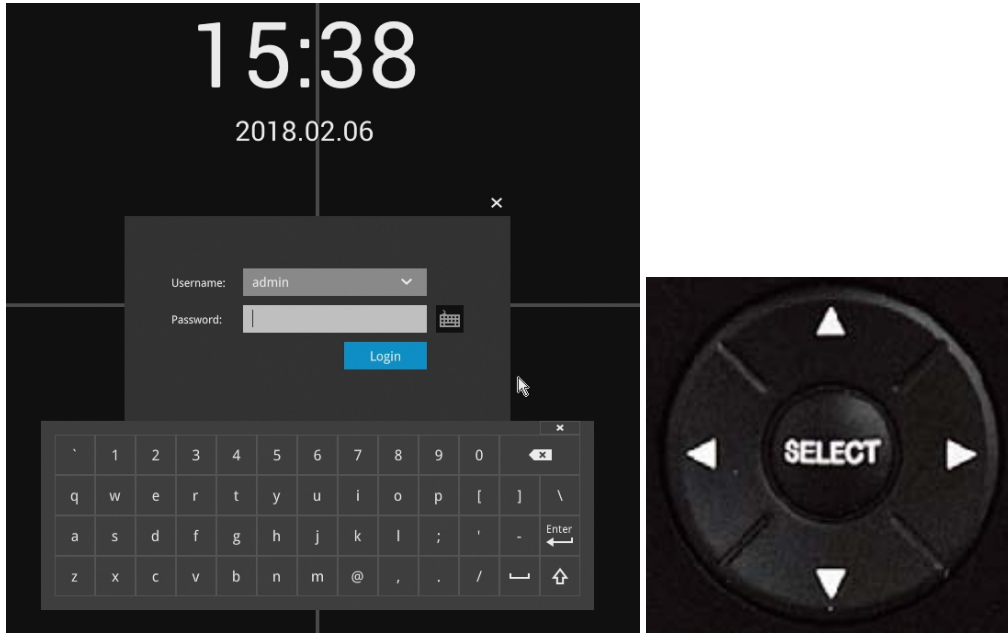


You can also enter the **number** of a channel, e.g., 8 and press the **Select** button to quickly move to a channel.



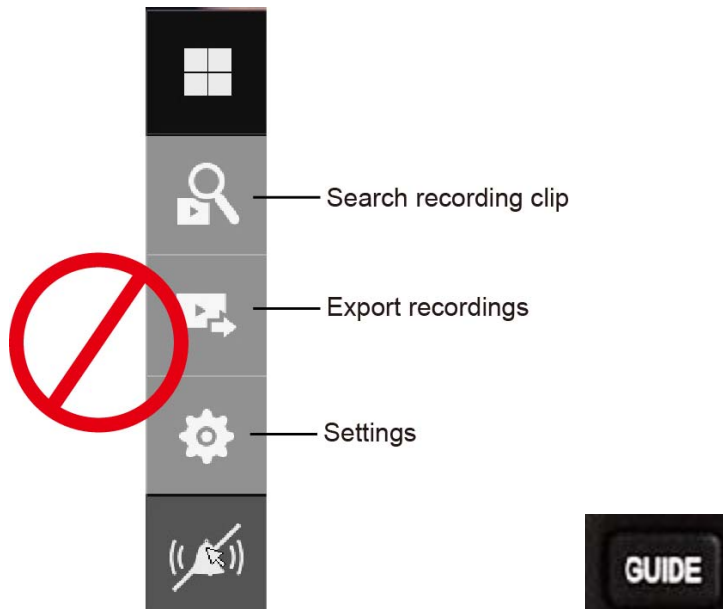
Use the **PAGE UP** and **PAGE DOWN** keys to move across multiple layout pages if you have many cameras placed on different screens.

4. When prompted for a user's credential, press the **down arrow** key to toggle the virtual keypad. Use the arrow keys to select alpha-numeric characters on the virtual keypad to enter your password. Use the **Select** button to confirm each selection.



NOTE:

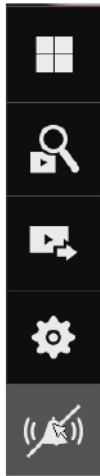
On the main portal tool bar, there are functional windows that are not accessible for users: Search recording, Export recordings, and Settings. You can use the main portal to change the layout and to mute the buzzer. The main portal is toggled using the **Guide** button.



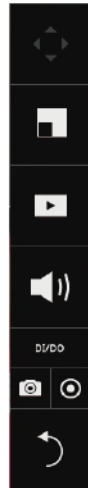
5. There are two different types of portals: the **Main function portal**, and the **Camera portal**. The Camera portal is toggled when a camera channel is selected.

When a channel is selected, press the **Guide** button to toggle the Camera portal.

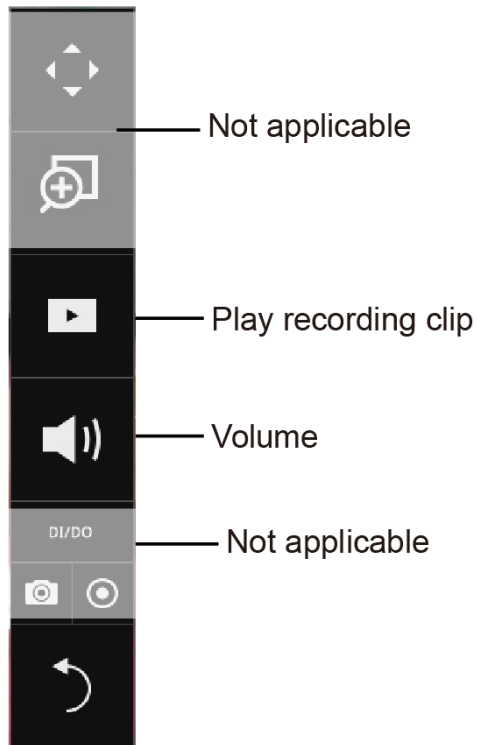
Main portal



Camera portal

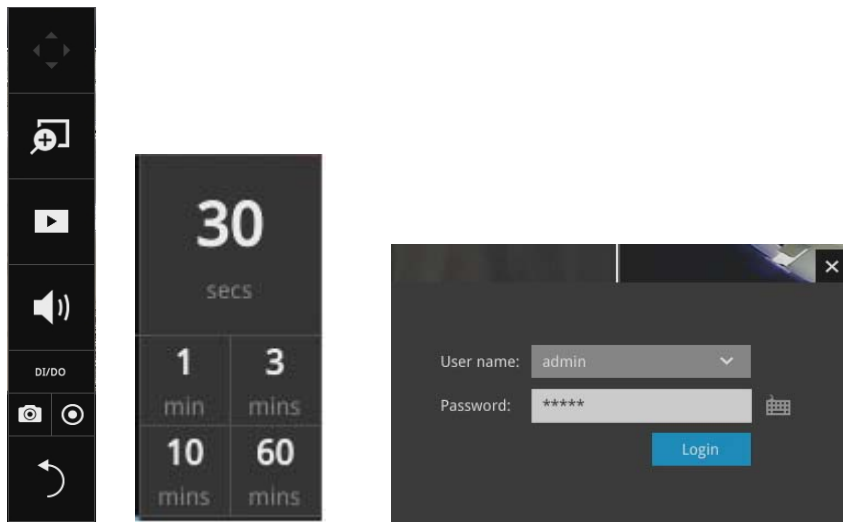


Camera Portal

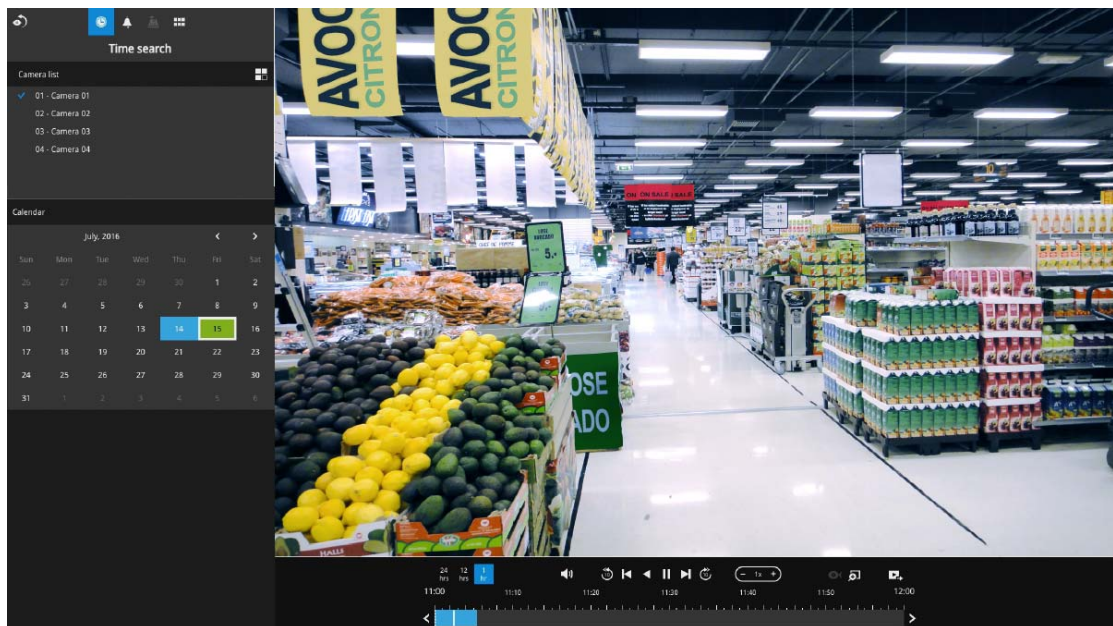


6. The **Play Recording Clips** function provides a shortcut to the latest recordings on the system. You can select 30 secs, 1 min, 3 mins, 10 mins, and 60 mins for an immediate playback.

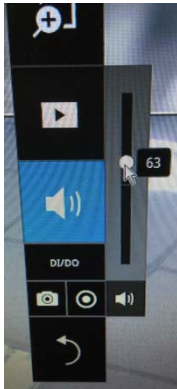
For security reasons, using this function requires users to enter his/her credentials.



The **Playback** window will prompt, and a playback begins from the point in time you selected, e.g., 30 seconds ago. This function allows you to quickly review what has just happened.



7. If audio feed is available via an onboard or external microphone, use the **Volume** slide bar to tune the volume.










8. Press the **Watch** button again to return to the Liveview.



Applicable Functions via the Remote Controller:

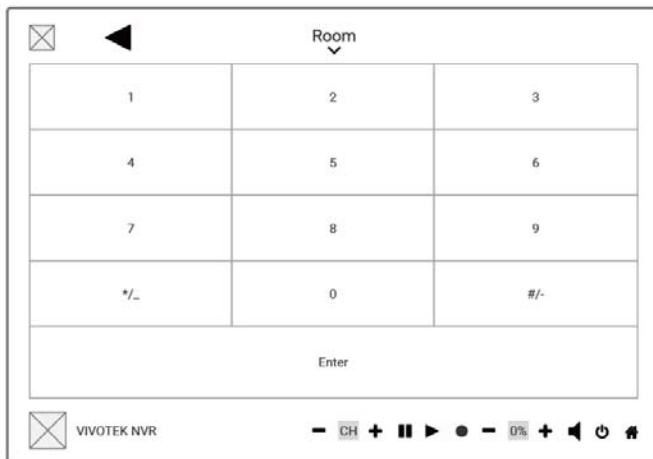
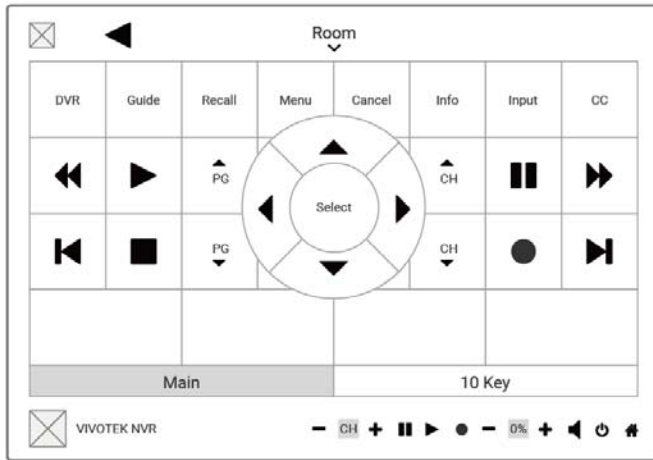


Button	Implementation	Description
WATCH	Live	Goes to or returns to Live view.
LIST	Toolbar	Toggles the Main portal or camera portal bar on the Live view.
GUIDE	Toolbar	Toggles the Main portal or camera portal bar on the Live view.
PAGE +	Page +	Enters next page.
PAGE -	Page -	Enters previous page.
PREV	PREV	Returns to previous page.
UP	Up	Arrow key, Up.
RIGHT	Right	Arrow key, Right.
DOWN	Down	Arrow key, Down.
LEFT	Left	Arrow key, Left.
SELECT	Select	Select / Enter.
CH+	CH+	With no selected view cell, the view cell on the upper left corner will be selected. With a selected view cell, the next view cell will be selected.
CH-	CH-	With no selected view cell, the view cell on the upper left corner will be selected. With a selected view cell, the previous view cell will be selected.










CNCL	CNCL	Cancel.
	Play	Play.
	Speed up	In Playback mode, speeds up the playback.
	Next frame	In Playback mode and in the control pane, displays the next video frame.
	Stop	Stop the playback.
	Pause	Pause the playback.
	Previous frame	In Playback mode and in the control pane, displays the previous video frame.
	Slow down	In Playback mode, reduces the playback speed.
Number keys	0~9	Number keys.

Applicable Functions via the Controller Panel:

Remote controller panel



Button	Implementation	Description
GUIDE	Toolbar	Toggles the Main portal or camera portal bar on the Live view.
Cancel	Cancel	Cancel
Input	Live	Goes to Live view
Enter/Select	Select	Select /Enter
▲	Up	Arrow key, Up
▶	Right	Arrow key, Right
▼	Down	Arrow key, Down
◀	Left	Arrow key, Left
◀◀	Slow down	Slows down video playback
▶▶	Play	Pplay

	Page Down	Enters previous page.
	Page Up	Enters next page.
	CH Up	When there is no selected view cell, press to focus on the view cell the upper left. When there is a selected view cell, press to focus on the previous view cell.
	CH Down	When there is no selected view cell, press to focus on the view cell the upper left. When there is a selected view cell, press to focus on the next view cell.
	Pause	Pauses the video playback.
	Speed up	Speeds up video playback.
	Previous frame	Plays previous video frame in playback.
	Stop	Stops the video playback.
	Next frame	Plays next video frame in playback.
Number keys	0 ~ 9	Number keys.